



PARTS LIST / DESPIECE

**NJM 200 CC**  
*NJM 200 CC*  
*NJM 200 CC*



# NJM 200

## Parts list / Despiece

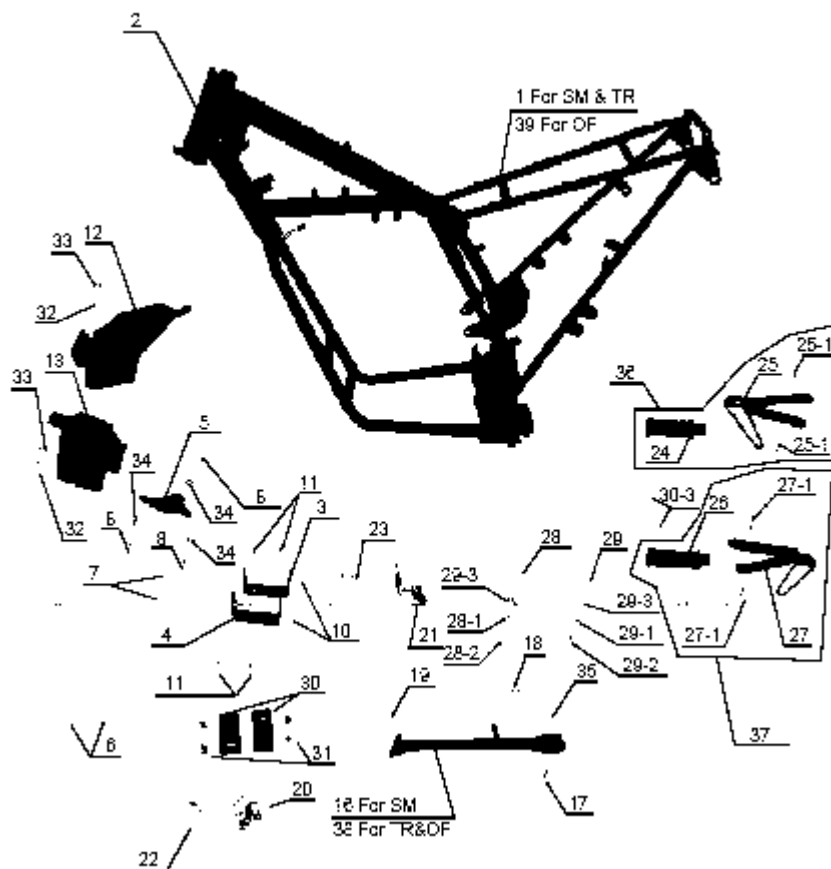


## Frame / Chasis

F01	MAIN FRAME / CHASIS PRINCIPAL	P. 04
F02	FRONT ROFK / HORQUILLA DELANTERA	P. 08
F03	REAR SUSPENSION / AMORTIGUADOR TRASERO	P. 10
F04	SWINGARM / BASCULANTE	P. 12
F05	REAR BRAKE / FRENO TRASERO	P. 14
F06	FUEL TANK – AIR FILTER / DEPOSITO – FILTRO AIRE	P. 16
F07	MUFFLER - EXHAUST / SILENCIADOR - ESCAPE	P. 18
F08	FRONT BRAKE / FRENO DELANTERO	P. 20
F09	SPEEDOMETER / CUENTAQUILOMETROS	P. 22
F10	LIGHTS / FAROS	P. 24
F11	FRONT WHEEL 17"/ RUEDA DELANTERA SUPERMOTARD 17"	P. 28
F12	FRONT WHEEL 21" / RUEDA DEALNTERA 21"	P. 30
F13	REAR WHEEL 17" / RUEDA TRASERA 17"	P. 32
F14	REAR WHEEL ASSY 18" / CONJ. RUEDA TRASERA 18"	P. 34
F15	ELECTRICAL PARTS / PARTE ELECTRICA	P. 36
F16	MISCELANIOUS CONTROLS / MANDOS VARIOS	P. 38
F17	PLASTIC PARTS / PLASTICOS	P. 40

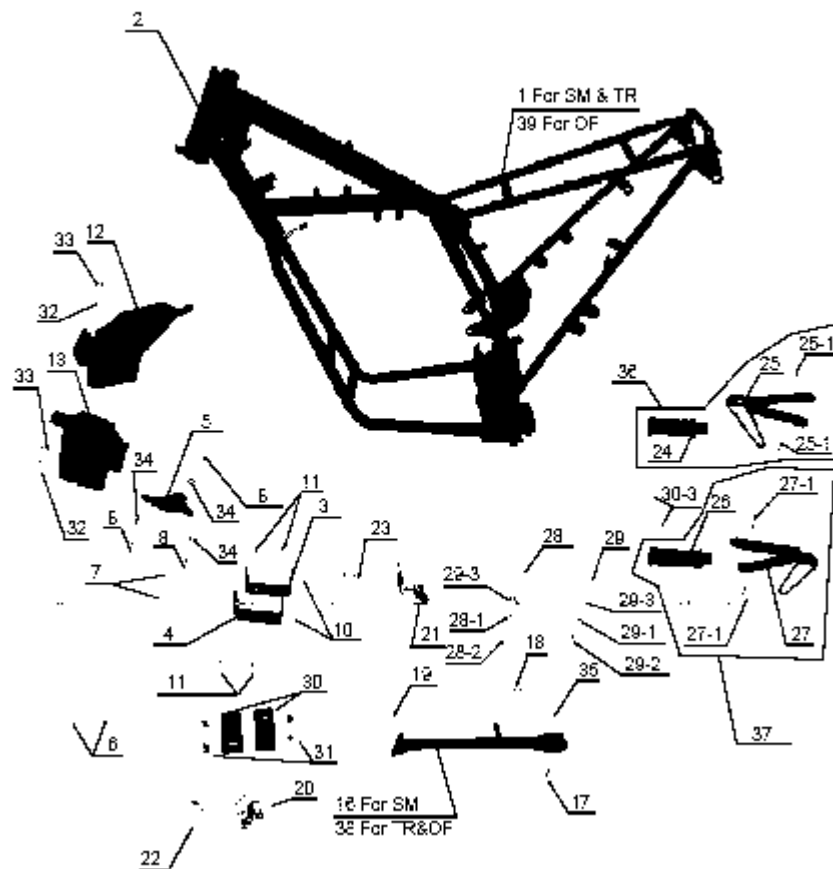
## Engine / Motor

M01	CYLINDER HEAD / CULATA	P. 43
M02	CYLINDER / CILINCRO	P. 45
M03	PAN SET / CONJUNTO CARTERES	P. 47
M04	GEAR PINION / CAMBIO PIÑONES	P. 49
M05	SELECTOR / SELECTOR	P. 53
M06	STARTING ENGINE / MOTOR ARRANQUE	P. 55
M07	ROTOR / ROTOR	P. 57
M08	PISTON CONNECTING ROD / CIGUEÑAL-BIELA-PISTON	P. 59
M09	ROTOR COVER / TAPA ROTOR	P. 61
M10	VALVES CAMSHAFT / ARBOL DE LEVAS - VALVULAS	P. 63
M11	STARTING ASSY / CONJUNTO PUESTA EN MARCHA	P. 65
M12	OIL PUMP / BOMBA ACEITE	P. 67
M13	CLUTCH COVER / TAPA EMBRAGUE	P. 69
M14	DISTRIBUTION ASSY / CONJUNTO DISTRIBUCIÓN	P. 71
M15	CLUTCH / EMBRAGUE	P. 73



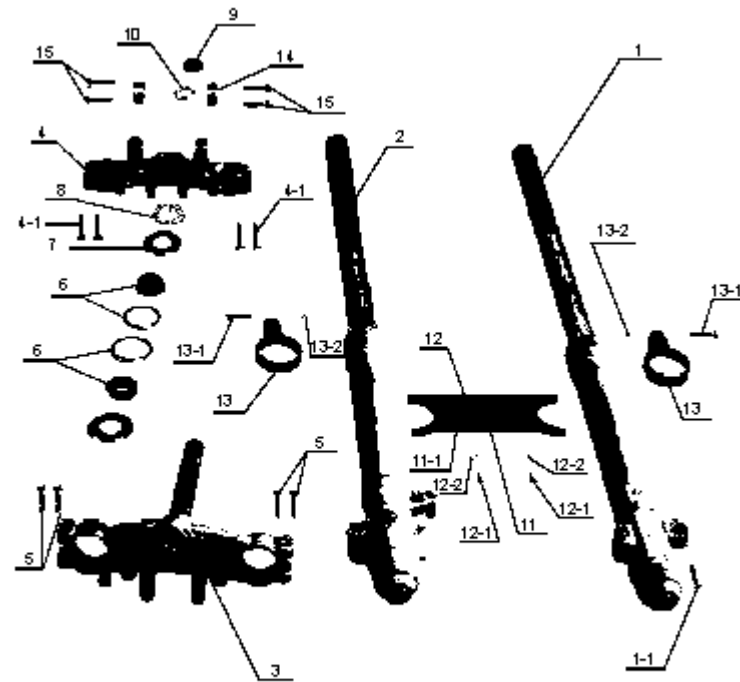
**F01**
**MAIN FRAME / CHASIS PRINCIPAL**

N°	Código	Description	Descripción	QTY
1	010100F0101	FRAME	CHASIS	1
2	010100F0102	ANTI-THEFT DEVICE	MECANISMO ANTIROBO	1
3	010100F0103	UPPER SUPPORTER	SOPORTE SUPERIOR	1
4	010100F0104	DOWN SUPPORTER	SOPORTE INFERIOR	1
5	010100F0105	UPPER SUPPORTER	SOPORTE SUPERIOR	2
6	010100F0106	BOLT	TORNILLO	2
7	010100F0107	BOLT	TORNILLO	2
8	010100F0108	BOLT	TORNILLO	3
9	010100F0109	SELF-LOCKING NUT	TUERCA AUTOBLOCANTE	5
10	010100F0110	SELF-LOCKING NUT	TUERCA AUTOBLOCANTE	2
11	010100F0111	BOLT	TORNILLO	4
12	010100F0112	RIGHT FENDER	GUARDABARROS DERECHO	1
13	010100F0113	LEFT FENDER	GUARDABARROS IZQUIERDO	1
14	010100F0114	BOLT	TORNILLO	2
15	010100F0115	SELF-LOCKING NUT	TUERCA AUTOBLOCANTE	2
16	010100F0116	SIDE STAND	PIE LATERAL-CABALLETE	1
17	010100F0117	STAND SCREW	TORNILLO SOPORTE PIE	1
18	010100F0118	STAND SPRING	MUELLE SOPORTE PIE	1
19	010100F0119	STAND SPACER	SEPARADOR SOPORTE PIE	1
20	010100F0120	LEFT FRONT FOOT SET	PIE DELANTERO IZQUIERDO	2
20-1	010100F0120-1	PIN	CLAVIJA	2
20-2	010100F0120-2	COTTER PIN	CLAVIJA	2
20-3	010100F0120-3	WASHER	ARANDELA	2



**F01**
**MAIN FRAME / CHASIS PRINCIPAL**

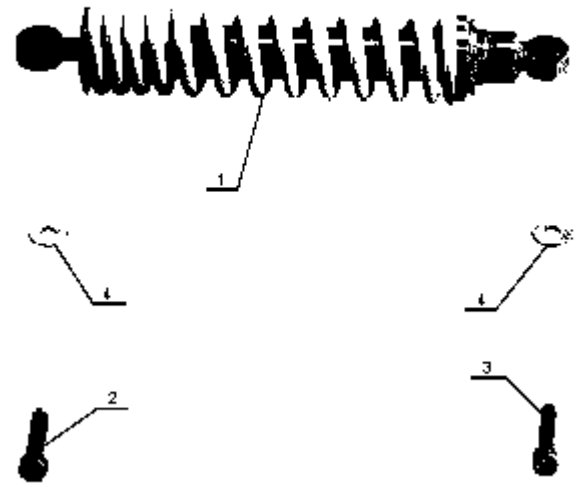
N°	Código	Description	Descripción	QTY
21	010100F0121	RIGHT FRONT FOOT SET	PIE DELANTERO DERECHO	1
22	010100F0122	LEFT FRONT FOOT REST SPRING	MUELLE APOYAPIES DELANTERO IZQ.	1
23	010100F0123	RIGHT FRONT FOOT REST SPRING	MUELLE APOYAPIES DELANTERO DCHO.	1
24	010100F0124	RIGHT REAR FOOT SET	JUEGO PIE TRASERO DERECHO	2
25	010100F0125	RIGHT REAR FOOT REST SUPPORT	SOPORTE APOYAPIES TRASERO DERECHO	1
25-1	010100F0125-1	BOLT	TORNILLO	2
26	010100F0126	LEFT REAR FOOT SET	PIE TRASERO IZQUIERDO	2
27	010100F0127	LEFT REAR FOOT REST SUPPORT	SOPORTE APOYAPIES TRASERO IZQUIERDO	1
27-1	010100F0127-1	BOLT	TORNILLO	2
28	010100F0128	UPPER CHAIN TENSIONER ROLLER	RODILLO SUPERIOR TENSOR CADENA	2
28-1	010100F0128-1	SPACER	DISTANCIADOR	1
28-2	010100F0128-2	BOLT	TORNILLO	1
29	010100F0129	UPPER CHAIN TENSIONER ROLLER	RODILLO SUPERIOR TENSOR CADENA	1
29-1	010100F0129-1	SPACER	DISTANCIADOR	1
29-2	010100F0129-2	BOLT	TORNILLO	1
29-3	010100F0129-3	WASHER	ARANDELA	2
30	010100F0130	RUBBER WASHER	ARANDELA DE GOMA	2
31	010100F0131	BUSH	BUJE	4
32	010100F0132	BOLT	TORNILLO	2
33	010100F0133	SELF-LOCKING NUT	TUERCA AUTOBLOCANTE	2
34	010100F0134	SELF-LOCKING NUT	TUERCA AUTOBLOCANTE	3
35	010100F0135	SELF-LOCKING NUT	TUERCA AUTOBLOCANTE	1
36	010100F0136	RIGHT REAR FOOT SET ASSY	CONJUNTO PIE TRASERO DERECHO	1
37	010100F0137	LEFT REAR FOOT SET ASSY	CONJUNTO PIE TRASERO IZQUIERDO	1
38	010100F0138	SIDE STAND	PIE LATERAL-CABALLETE	1
39	010100F0139	FRAME	CHASIS	1





**F02 FRONT FORK / HORQUILLA DELANTERA**

N°	Código	Description	Descripción	QTY
1	010100F0201	RIGHT ARM ASSEMBLY	CONJUNTO BRAZO DERECHO	1
1-1	010100F0201-1	BOLT	TORNILLO	2
2	010100F0202	LEFT ARM ASSEMBLY	CONJUNTO BRAZO IZQUIERDO	1
3	010100F0203	UNDER BRACKET	ESCUADRA INFERIOR	1
4	010100F0204	HANDLE CROWN	SOPORTE CORONA	1
4-1	010100F0204-1	BOLT	TORNILLO	4
5	010100F0205	BOLT	TORNILLO	4
6	010100F0206	BEARING SET 32005	CONJUNTO COJINETE 32005	2
7	010100F0207	WASHER	ARANDELA	2
8	010100F0208	NUT	TUERCA	1
9	010100F0209	RUBBER CAP	TAPON DE GOMA	1
10	010100F0210	NUT	TUERCA	1
11	010100F0211	1/2 FRONT FIXATION TENDER SM	1/2 FIJACION DELANTERA SM	1
11-1	010100F0211-1	BOLT	TORNILLO	2
12	010100F0212	1/2 REAR FIXATION TENDER SM	1/2 FIJACION TRASERA SM	1
12-1	010100F0212-1	BOLT	TORNILLO	2
12-2	010100F0212-2	WASHER	ARANDELA	2
13	010100F0213	CLIP	GRUPILLA	2
13-1	010100F0213-1	BOLT	TORNILLO	2
13-2	010100F0213-2	NUT	TUERCA	2
14	010100F0214	UPPER HANDLEBAR HOLDER	SOPORTE SUPERIOR MANILLAR	2
15	010100F0215	BOLT	TORNILLO	4



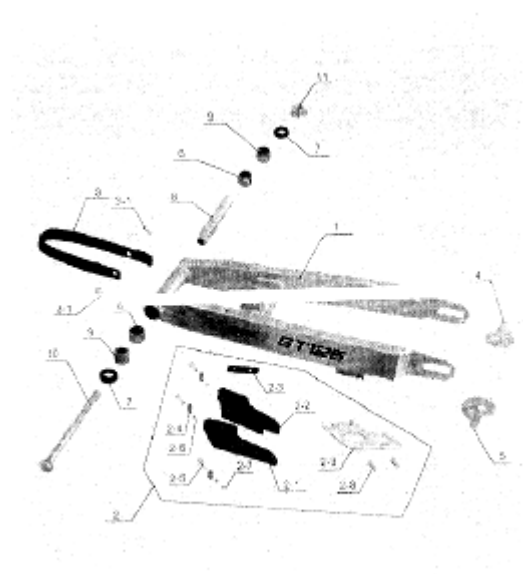
F03

**REAR SUSPENSIÓN / AMORTIGUADOR TRASERO**

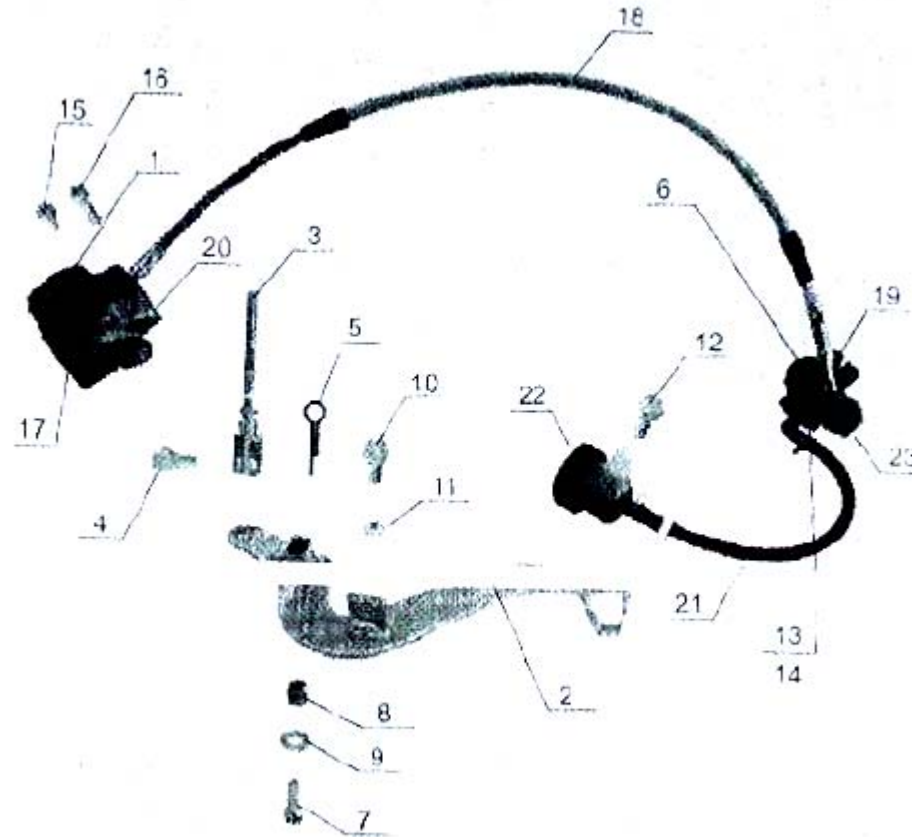
N°	Código	Description	Descripción	QTY
1	010100F0301	REAR SHOCK ABSORB	AMORTIGUADOR TRASERO	1
2	010100F0302	BOLT	TORNILLO	1
3	010100F0303	BOLT	TORNILLO	1
4	010100F0304	WASHER	ARANDELA	2

F04

SWING ARM / BASCULANTE

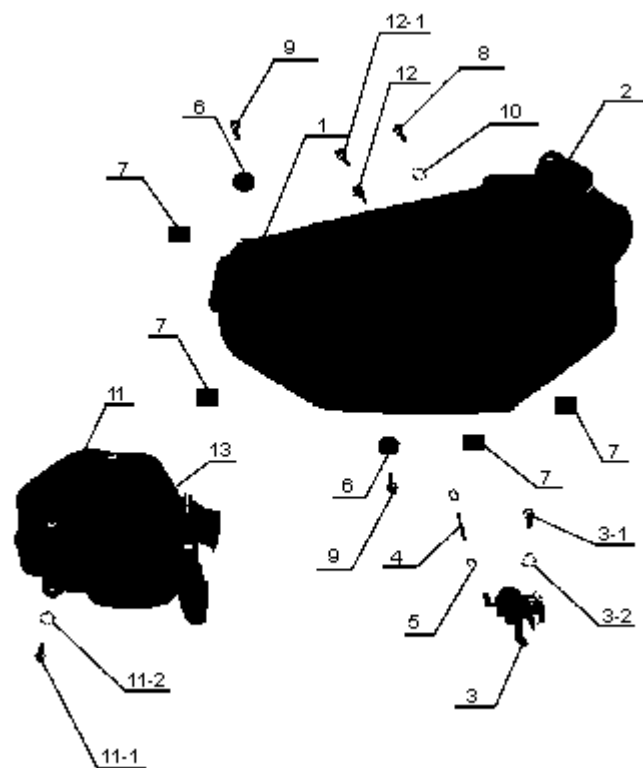


N°	Código	Description	Descripción	QTY
1	010100F0401	SWINGARM	BRAZO OSCILANTE	1
2	010100F0402	RUBBER BUSHING	BUJE DE GOMA	1
2-1	010100F0402-1	RUBBER BUSHING ( L )	BUJE DE CAUCHO IZQUIERDO	1
2-2	010100F0402-2	RUBBER BUSHING ( R )	BUJE DE CAUCHO DERECHO	1
2-3	010100F0402-3	LINKING PLATE	DISCO DE UNION	1
2-4	010100F0402-4	SPACE	DISTANCIADOR	3
2-5	010100F0402-5	SCREW	TORNILLO	3
2-6	010100F0402-6	NUT	TUERCA	3
2-7	010100F0402-7	WASHER	ARANDELA	1
2-8	010100F0402-8	SCREW	TORNILLO	2
2-9	010100F0402-9	STAY	ERROR	1
3	010100F0403	CHAIN SUPPORT	SOPORTE CADENA	1
3-1	010100F0403-1	SCREW GB819-85mb-Zn.DB	TORNILLO GB819-85mb-Zn.DB	2
4	010100F0404	RIGHT CHAIN PULLER	TIRADOR DERECHO CADENA	1
5	010100F0405	LEFT CHAIN PULLER	TIRADOR IZQUIERDO CADENA	1
6	010100F0406	BEARING NK2220	COJINETE NK2220	2
7	010100F0407	OIL SEAL	RETEN	2
8	010100F0408	SPACER	SEPARADOR	1
9	010100F0409	SPACER	SEPARADOR	2
10	010100F0410	SWING ARM AXLE	EJE BRAZO OSCILANTE	1
11	010100F0411	SELF-LOCKING NUT	TUERCA AUTOBLOCANTE	1



**F05**
**REAR BRAKE / FRENO TRASERO**

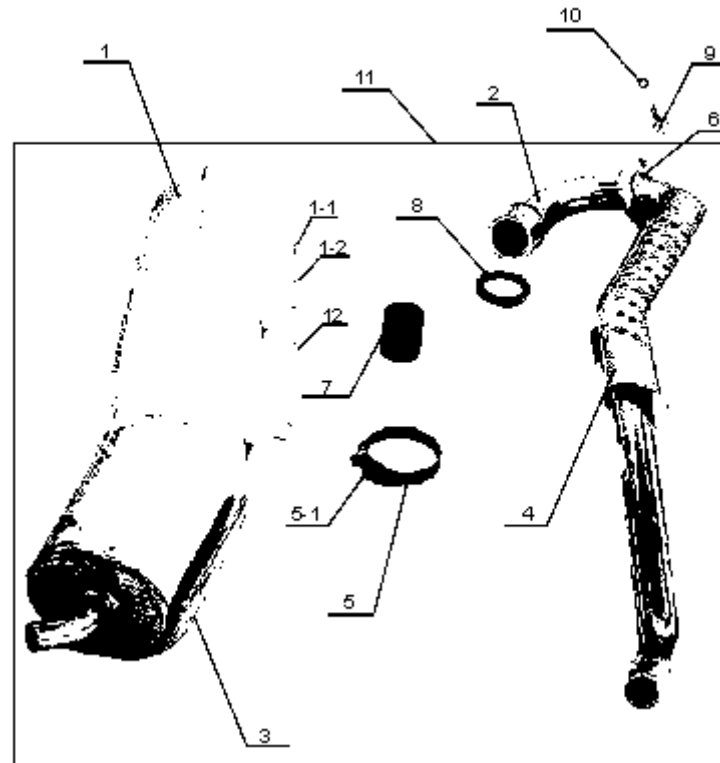
N°	Código	Description	Descripción	QTY
1	010100F0501	REAR BRAKE ASSY	CONJUNTO FRENO TRASERO	1
2	010100F0502	BRAKE PEDAL ASSY	CONJUNTO PEDAL FRENO	1
3	010100F0503	TAPPET ASSY	CONJUNTO TAQUE	1
4	010100F0504	PIN	CLAVIJA	1
5	010100F0505			1
6	010100F0506	DUST SEAL COVER	CUBIERTA GUARDAPOLVO	1
7	010100F0507	BOLT	TORNILLO	1
8	010100F0508	SPACER	SEPARADOR	1
9	010100F0509	WASHER	ARANDELA	1
10	010100F0510	BOLT	TORNILLO	1
11	010100F0511	LOCK NUT	TUERCA	1
12	010100F0512	BOLT	TORNILLO	1
13	010100F0513	SELF LOCKING NUT	TUERCA AUTOBLOCANTE	2
14	010100F0514	BOLT	TORNILLO	2
15	010100F0515	BOLT	TORNILLO	1
16	010100F0516	BOLT	TORNILLO	1
17	010100F0517	BRAKE PAD	PASTILLA FRENO	2
18	010100F0518	REAR BRAKE HOSE	MANGUITO FRENO TRASERO	1
19	010100F0519	REAR BRAKE PUMP	BOMBA FRENO TRASERO	1
20	010100F0520	REAR BRAKE CALIPER	PINZA FRENO TRASERO	1
21	010100F0521	OIL TANK HOSE	MANGUITO DEPOSITO ACEITE	1
22	010100F0522	REAR BRAKE OIL CAP	TAPON ACEITE FRENO TRASERO	1
23	010100F0523	REAR BRAKE SWITCH	INTERRUPTOR FRENO TRASERO	1





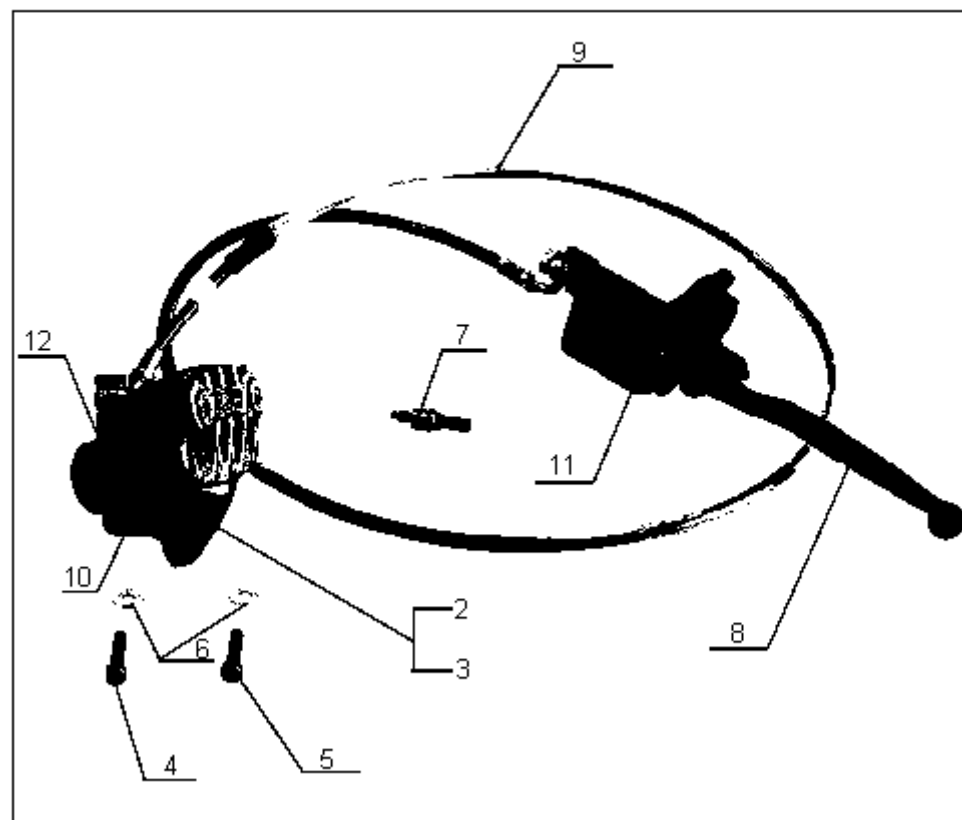
**F06**
**FUEL TANK – AIR FILTER / DEPOSITO – FILTRO AIRE**

N°	Código	Description	Descripción	QTY
1	010100F0601	FUEL TANK	DEPOSITO GASOLINA	1
2	010100F0602	FUEL TANK CAP	TAPON DEPOSITO GASOLINA	1
3	010100F0603	FUEL COCK	GRIFO GASOLINA	1
3-1	010100F0603-1	SCREW	TORNILLO	2
3-2	010100F0603-2	WASHER	ARANDELA	2
4	010100F0604	HOSE	MANGUITO	1
5	010100F0605	CLIP	PRESILLA	2
6	010100F0606	RUBBER PAD	PASTILLA DE GOMA	2
7	010100F0607	RUBBER PAD	PASTILLA DE GOMA	4
8	010100F0608	SCREW	TORNILLO	1
9	010100F0609	SCREW	TORNILLO	2
10	010100F0610	WASHER	ARANDELA	1
11	010100F0611	AIR FILTER ASSY	CONJUNTO FILTRO AIRE	1
11-1	010100F0611-1	BOLT	TORNILLO	1
11-2	010100F0611-2	WASHER	ARANDELA	1
12	010100F0612	CLIP	PRESILLA	1
12-1	010100F0612-1	BOLT	TORNILLO	1
13	010100F0613	AIR FILTER ELEMENT	ELEMENTOS FILTRO AIRE	1



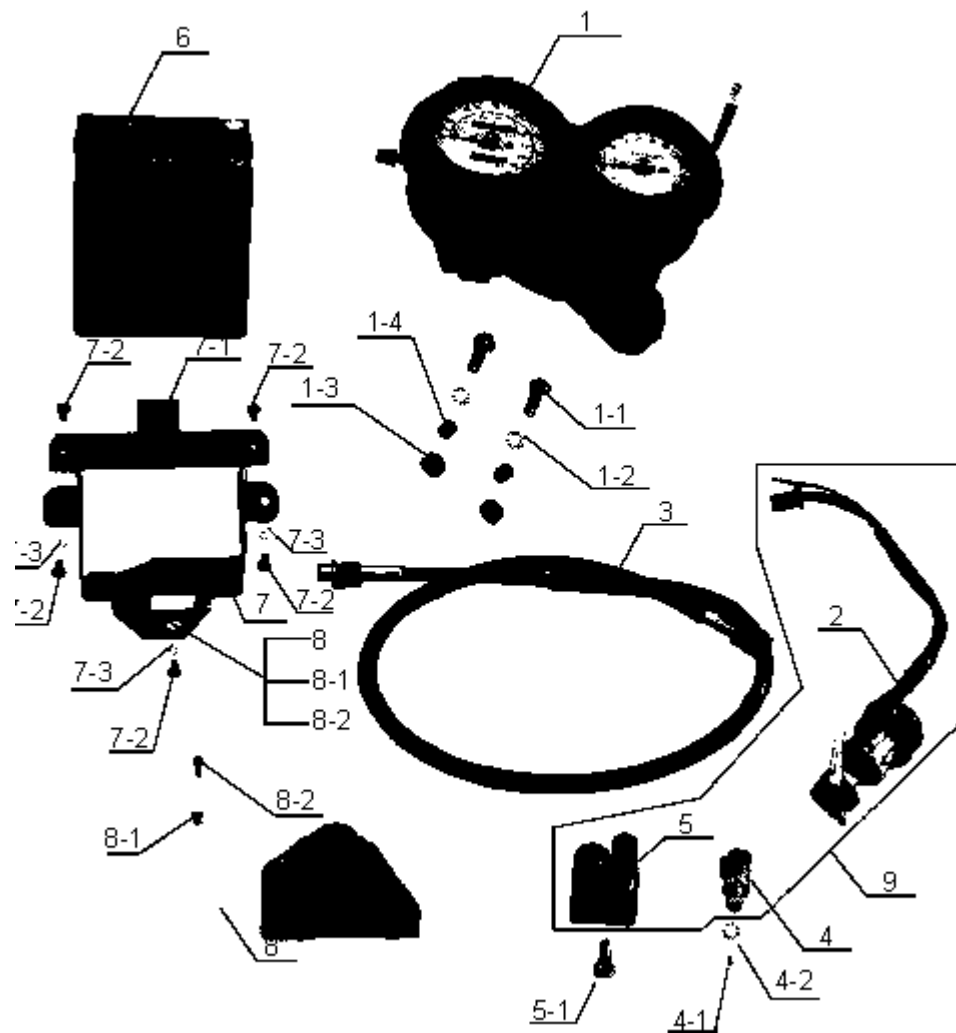
**F07**
**MUFFLER – EXHAUST / SILENCIADOR - ESCAPE**

N°	Código	Description	Descripción	QTY
1	010100F0701	SILENCER	SILENCIADOR	1
1-1	010100F0701-1	BOLT	TORNILLO	1
1-2	010100F0701-2	WASHER	ARANDELA	1
2	010100F0702	EXHAUST PIPE	TUBO DE ESCAPE	1
3	010100F0703	SILENCER FENDER	GUARDABARROS DEL SILENCIADOR	1
4	010100F0704	FENDER EXHAUST	GUARDABARROS DEL TUBO DE ESCAPE	1
5	010100F0705	CLIP	PRESILLA	1
5-1	010100F0705-1	BOLT	TORNILLO	1
6	010100F0706	CLIP	PRESILLA	1
7	010100F0707	RING	ANILLA	1
8	010100F0708	RING	ANILLA	1
9	010100F0709	NUT	TUERCA	2
10	010100F0710	LOCK WASHER	ARANDELA BLOCANTE	2
11	010100F0711	SILENCER ASSY	CONJUNTO SILENCIADOR	1
12	010100F0712	SELF-LOCKING NUT	TUERCA AUTOBLOCANTE	1

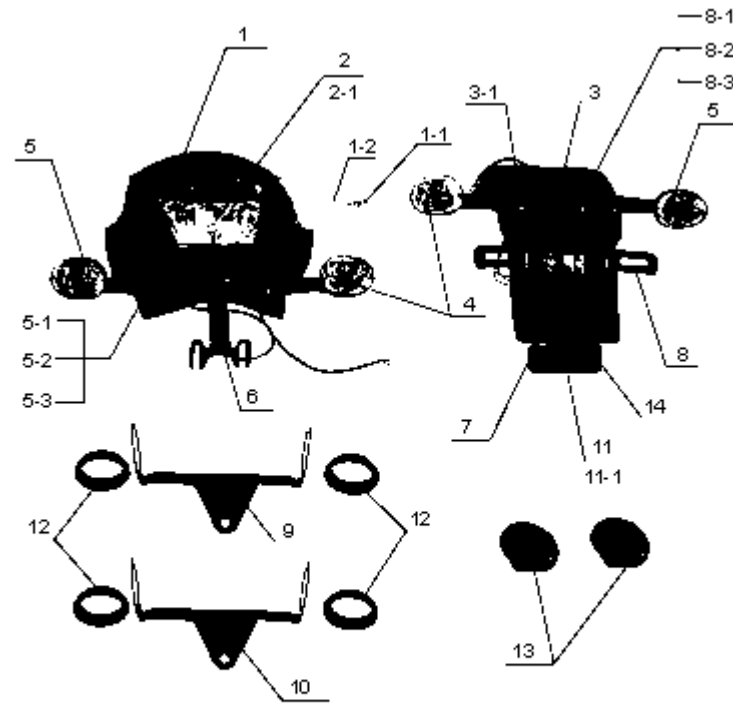


**F08**
**FRONT BRAKE / FRENO DELANTERO**

N°	Código	Description	Descripción	QTY
1	010100F0801	FRONT BRAKE ASSY	CONJUNTO FRENO DELANTERO	1
2	010100F0802	HOLDER	SOPORTE	1
3	010100F0803	BOLT	TORNILLO	2
4	010100F0804	BOLT	TORNILLO	1
5	010100F0805	BOLT	TORNILLO	1
6	010100F0806	WASHER	ARANDELA	2
7	010100F0807	FRONT BRAKE SWITCH	INTERRUPTOR FRENO DELANTERO	1
8	010100F0808	FRONT BRAKE LEVER	PALANCA FRENO DELANTERO	1
9	010100F0809	BRAKE HOSE	MANGUITO FRENO	1
10	010100F0810	BRAKE PAD	PASTILLA FRENO	2
11	010100F0811	FRONT BRAKE CYLINDER	CILINDRO FRENO DELANTERO	1
12	010100F0812	FRONT BRAKE CALIPER	PINZA FRENO DELANTERO	1



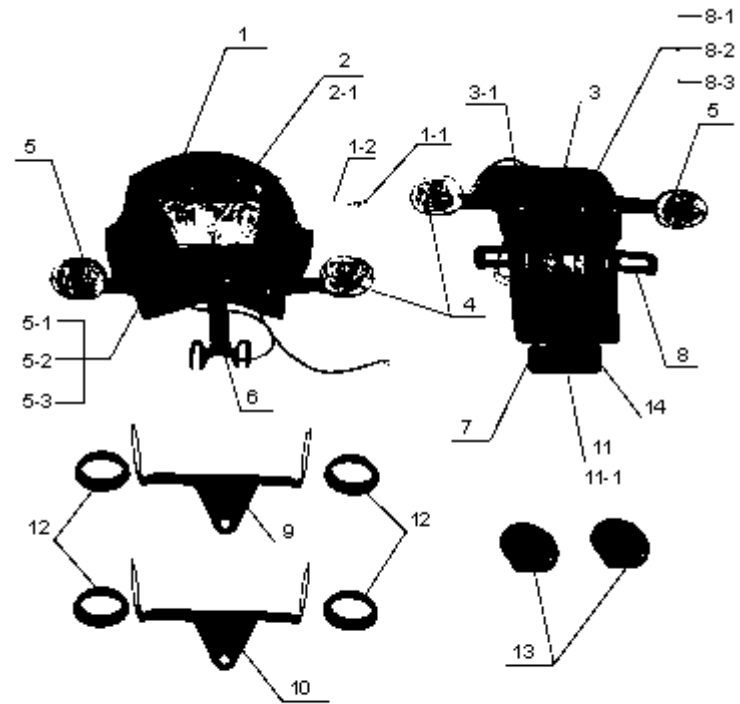
N°	Código	Description	Descripción	QTY
1	010100F0901	PANEL CONTROL	PANEL DE CONTROL	1
1-1	010100F0901.1	PANEL CONTROL	PANEL DE CONTROL	1
1-1	010100F0901-1	BOLT	TORNILLO	2
1-2	010100F0901-2	WASHER	ARANDELA	2
1-3	010100F0901-3	WASHER RUB	ARANDELA CAUCHO	2
1-4	010100F0901-4	SPACER	ESPACIADOR	2
2	010100F0902	MAIN SWITCH	INTERRUPTOR PRINCIPAL	1
3	010100F0903	SPEEDOMETER CABLE	CABLE VELOCIMETRO	1
4	010100F0904	STEERING LOCK	CIERRE DIRECCION	1
4-1	010100F0904-1	RIVER	REMACHE	1
4-2	010100F0904-2	WASHER	ARANDELA	1
5	010100F0905	HELMET LOCK	CIERRE CASCO	1
5-1	010100F0905-1	SCREW	TORNILLO	1
6	010100F0906	BATTERY	BATERIA	1
7	010100F0907	BATTERY HOLDER	SOPORTE BATERIA	1
7-1	010100F0907-1	BATTERY BAND	(tira) BATERIA	1
7-2	010100F0907-2	BOLT	TORNILLO	5
7-3	010100F0907-3	WASHER	ARANDELA	3
8	010100F0908	BATTERY COVER	CUBIERTA DE LA BATERIA	1
8-1	010100F0908-1	NUT	TUERCA	1
8-2	010100F0908-2	BOLT	TORNILLO	1
9	010100F0909	KIT TO LOCK	JUEGO DE CIERRES	1





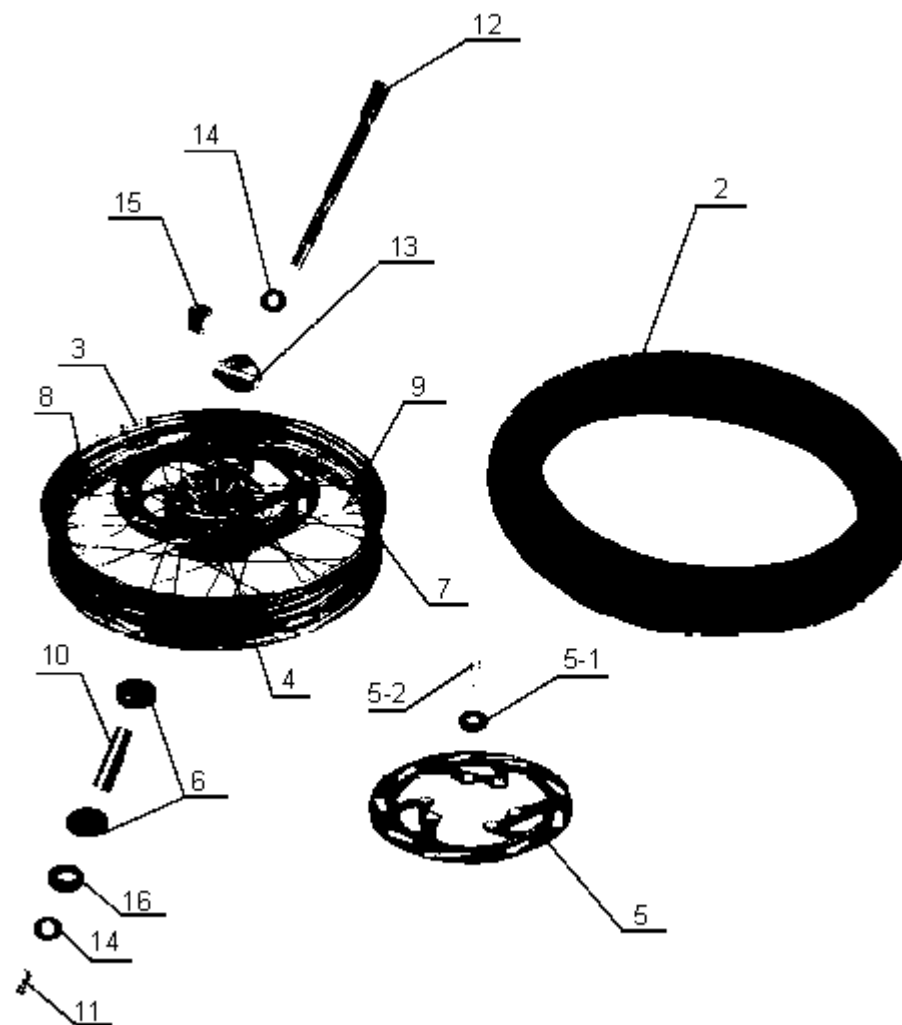
**F10**
**LIGHTS / FAROS I PILOTOS**

N°	Código	Description	Descripción	QTY
1	010101F1001	HEAD LIGHT COVER	CUBIERTA LUZ PRINCIPAL	1
1-1	010100F1001-1	BOLT	TORNILLO	2
1-2	010100F1001-2	LOCK WASHER	ARANDELA DE AJUSTE	2
2	010100F1002	HEAD LIGHT	LUZ PRINCIPAL	1
3	010100F1003	TAIL LIGHT ASSY	CONJUNTO LUZ TRASERA	1
3-1	010100F1003-1	SELF-LOCKING NUT	TUERCA AUTOBLOCANTE	2
4	010100F1004	LEFT TURNING LIGHT	INTERMITENTE IZQUIERDO	2
5	010100F1005	RIGHT TURNING LIGHT	INTERMITENTE DERECHO	2
5-1	010100F1005-1	WASHER	ARANDELA	4
5-2	010100F1005-2	NUT	TUERCA	4
5-3	010100F1005-3	LOCK WASHER	ARANDELA BLOCANTE	4
6	010100F1006	HEAD LIGHT COVER ADJUSTING SUPPORT	SOPORTE DE AJUSTE DE CUBIERTA DE LUZ PRINCIPAL	1
7	010100F1007	TAIL COVER	CUBIERTA TRASERA	1
8	010100F1008	REAR REGISTRATION PLATE SUPPORT	SOPORTE PLACA TRASERA DE REGISTRO	1
8-1	010100F1008-1	BOLT	TORNILLO	2
8-2	010100F1008-2	NUT	TUERCA	2
8-3	010100F1008-3	WASHER	ARANDELA	2



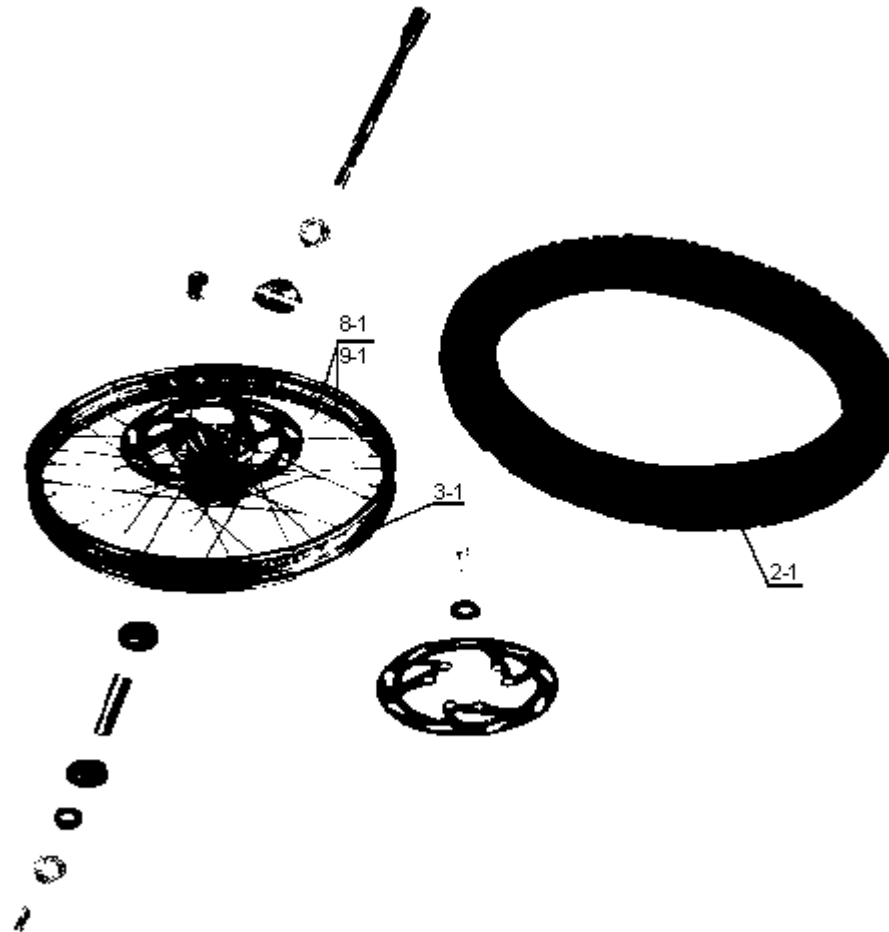
**F10 LIGHTS / FAROS I PILOTOS**

N°	Código	Description	Descripción	QTY
9	010100F1009	HEAD LIGHT SUPPORT (L)	SOPORTE LUZ PRINCIPAL (IZQ.)	1
10	010100F1010	HEAD LIGHT SUPPORT (R)	SOPORTE LUZ PRINCIPAL (DCHO)	1
11	010100F1011	REAR REFLECTOR	REFLECTOR TRASERO	1
11-1	010100F1011-1	NUT	TUERCA	1
12	010100F1012	WASHER RUBBER	ARANDELA DE GOMA	4
13	010100F1013	REFLECTOR	REFLECTOR	2
14	010100F1014	REAR CARRIER	PORTAEQUIPAJES TRASERO	1
15	010100F1015	REAR FENCER REINFORCEMENT	REFUERZO GUARDABARROS TRASERO	1
16	010100F1016	HEAD LIGHT SEAT	ASIENTO LUZ PRINCIPAL	1
17	010100F1017	REFLECTOR SUPPORT	SOPORTE DEL REFLECTOR	2



**F11**
**FRONT WHEEL 17"/ RUEDA DELANTERA SUPERMOTARD 17"**

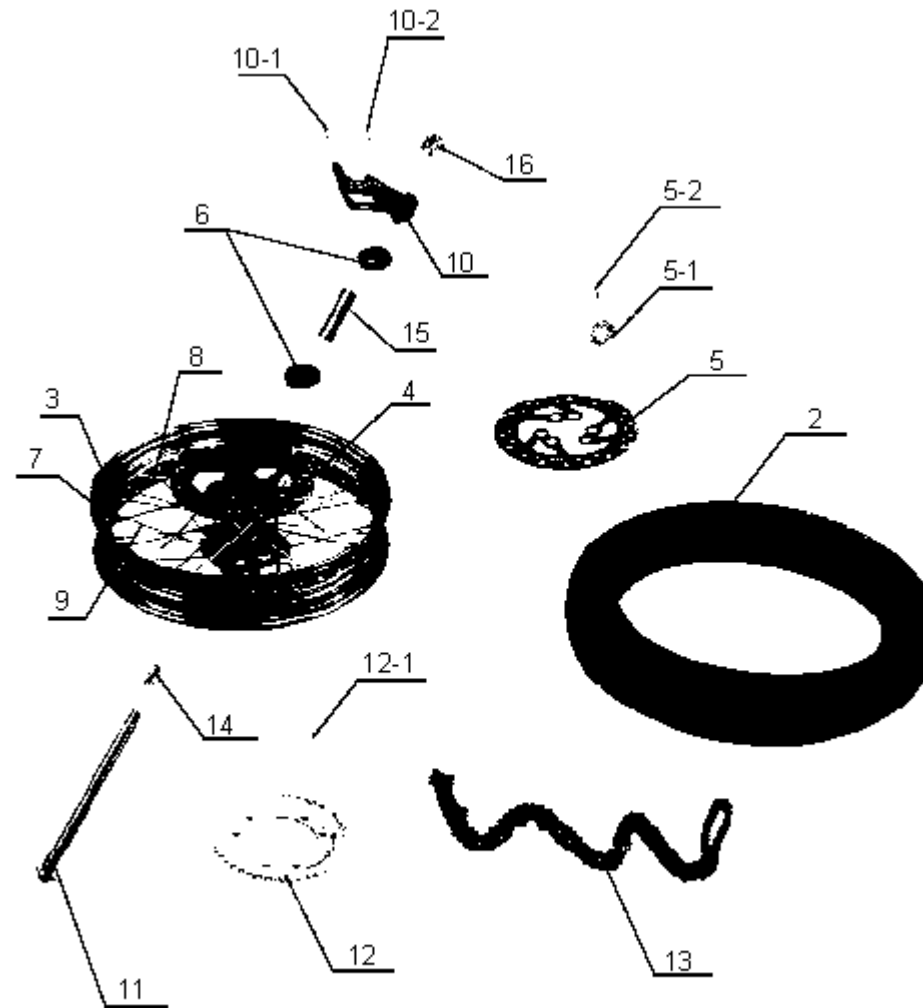
N°	Código	Description	Descripción	
1	010100F1101	WHEEL RIM ASSEMBLY	CONJUNTO LLANTAS DE LAS RUEDAS	1
2	010100F1102	TIRE	NEUMATICLO	1
2-1	010100F1102-1	INNER TUBE	TUBO INTERIOR	1
2-2	010100F1102-2	BAND RIM	LLANTA	1
3	010100F1103	RIM	LLANTA	1
4	010100F1104	WHEEL HUB	CUBO RUEDA	1
5	010100F1105	BRAKE DISC	DISCO FRENO	1
5-1	010100F1105-1	BUSHING	BUJE	6
5-2	010100F1105-2	BOLT	TORNILLO	6
6	010100F1106	BEARING 80202 GB278-82	COJINETE 80202 GB278-82	2
7	010100F1107	SPOKE NUT	TUERCA DEL RADIO	36
8	010100F1108	SPOKE (R)	RADIO (DCHO)	18
9	010100F1109	SPOKE (L)	RADIO(IZQ.)	18
10	010100F1110	SPACER	SEPARADOR	1
11	010100F1111	SPACER (L)	SEPARADOR (IZQ)	1
12	010100F1112	AXLE	EJE	1
13	010100F1113	SPEED METER CLUTCH	EMBRAGUE VELOCIMETRO	1
14	010100F1114	WASHER	ARANDELA	1
15	010100F1115	SPACER (R)	SEPARADOR (DCHO)	1
16	010100F1116	OIL SEAL	RETEN	1



F12

**FRONT WHEEL 21" / RUEDA DEALNTERA 21"**

N°	Código	Description	Descripción	QTY
1-1	010100F1201-1	WHEEL RIM ASSY	CONJUNTO LLANTAS DE LAS RUEDAS	1
2-1	010100F1202-1	TIRE	NEUMATICO	1
2-2	010100F1202-2	INNER TUBE	TUBO INTERIOR	1
2-3	010100F1202-3	BAND RIME	NEUMATICO	1
3-1	010100F1203-1	WHEEL RIM	LLANTA RUEDA	1
9-1	010100F1209-1	SPOKE	RADIOS	36



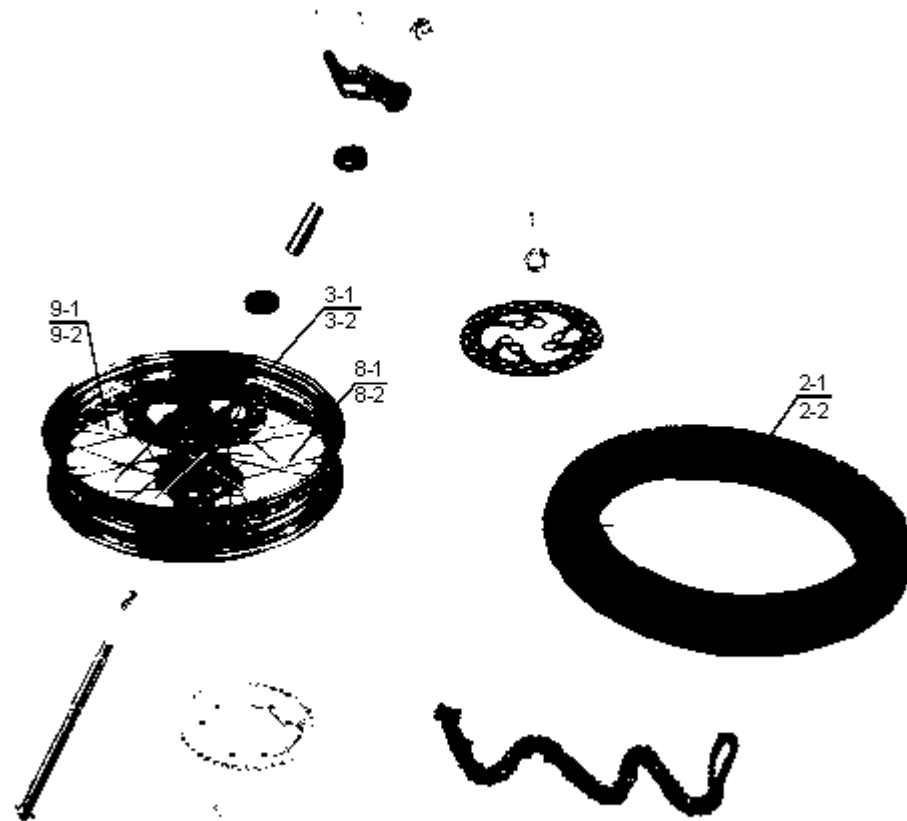


**F13**
**REAR WHEEL 17" / RUEDA TRASERA 17"**

N°	Código	Description	Descripción	QTY
1	010100F1301	WHEEL RIM ASSY	CONJUNTO LLANTAS DE LA RUEDA	1
2	010100F1302	TIRE	NEUMATICO	1
2-1	010100F1302-1	INNER TUBE	TUBO INTERIOR	1
2-2	010100F1302-2	BAND RIME	LLANTA	1
3	010100F1303	RIM	LLANTA	1
4	010100F1304	WHEEL HUB	CUBO RUEDA	1
5	010100F1305	BRAKE DISC	DISCO DEL FRENO	1
5-1	010100F1305-1	BUSHING	BUJE	6
5-2	010100F1305-2	BOLT	TORNILLO	6
6	010100F1306	BEARING	COJINETE	2
7	010100F1107	SPOKE NUT	TUERCA RADIO	36
8	010100F1308	SPOKE (R)	RADIO (DCHO.)	18
9	010100F1309	SPOKE (L)	RADIO (IZQ.)	18
10	010100F1310	CALIPER BRAKE SUPPORT	PINZA SOPORTE FRENO	1
10-1	010100F1310-1	BOLT	TORNILLO	1
10-2	010100F1310-2	BOLT	TORNILLO	1
11	010100F1311	WHEEL AXLE	EJE RUEDA	1
12	010100F1312	DRIVE SPROCKET Z=47	CORONA DE TRANSMISION Z=47	1
12-1	010100F1312-1	BOLT	TUERCA AUTOBLOCANTE	6
13	010100F1313	DRIVE CHAIN	CADENA DE TRANSMISION	1
14	010100F1314	SPACER (L)	SEPARADOR(IZQ)	1
15	010100F1315	SPACER	SEPARADOR(DCHO)	1
16	010100F1316	SELF-LOCKING NUT m16 x 1.5	TUERCA AUTOBLOCANTE	1

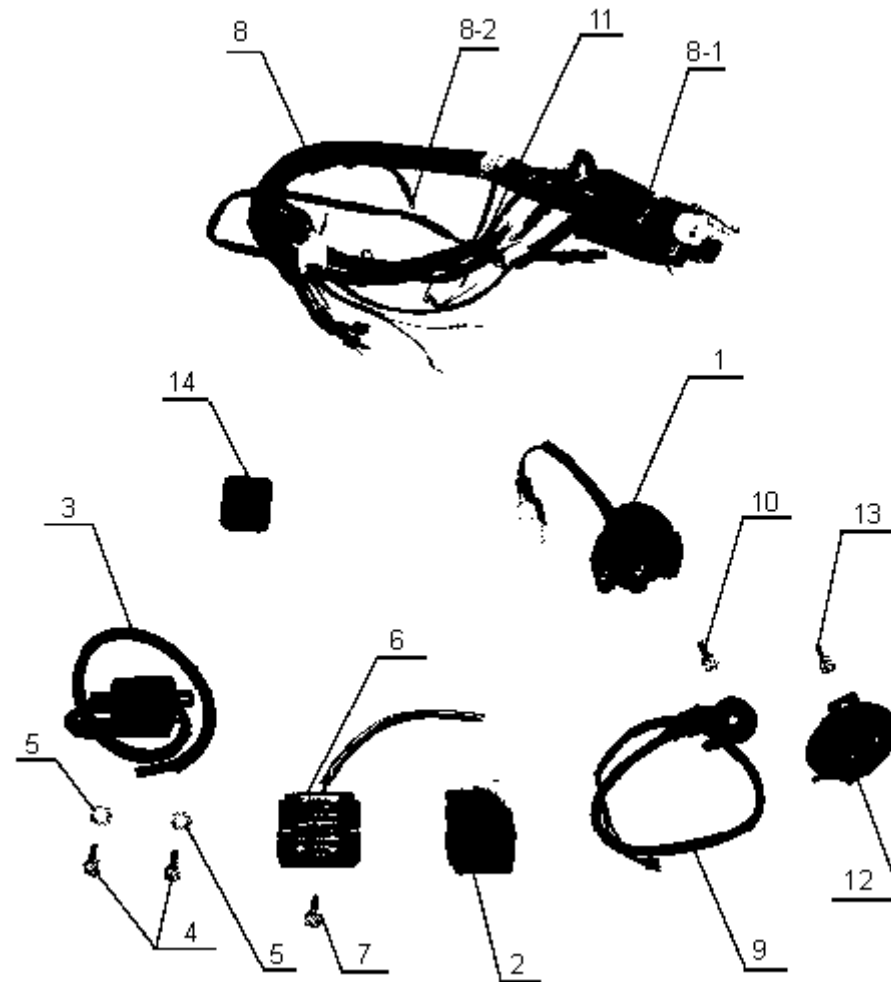
F14

REAR WHEEL ASSY 18" / CONJ. RUEDA TRASERA 18"

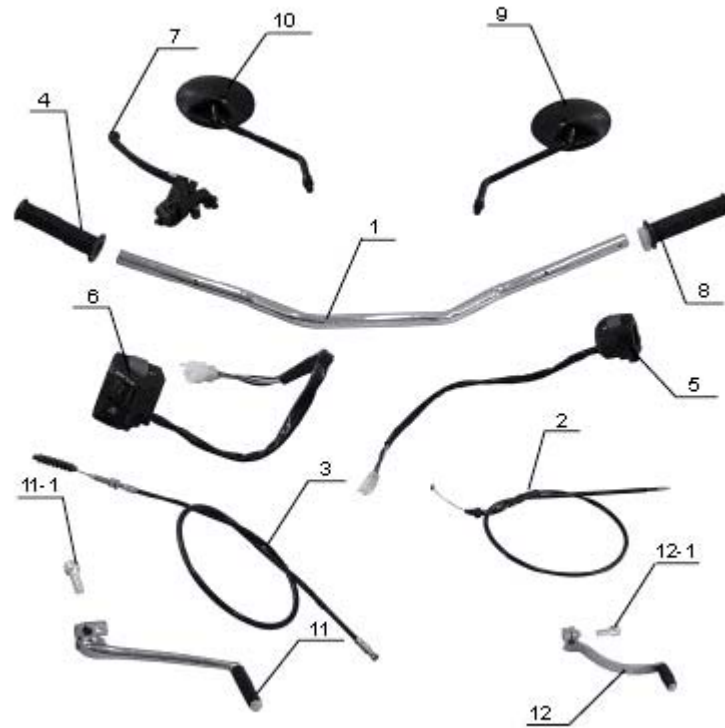


**F14**
**REAR WHEEL ASSY 18" / CONJ. RUEDA TRASERA 18"**

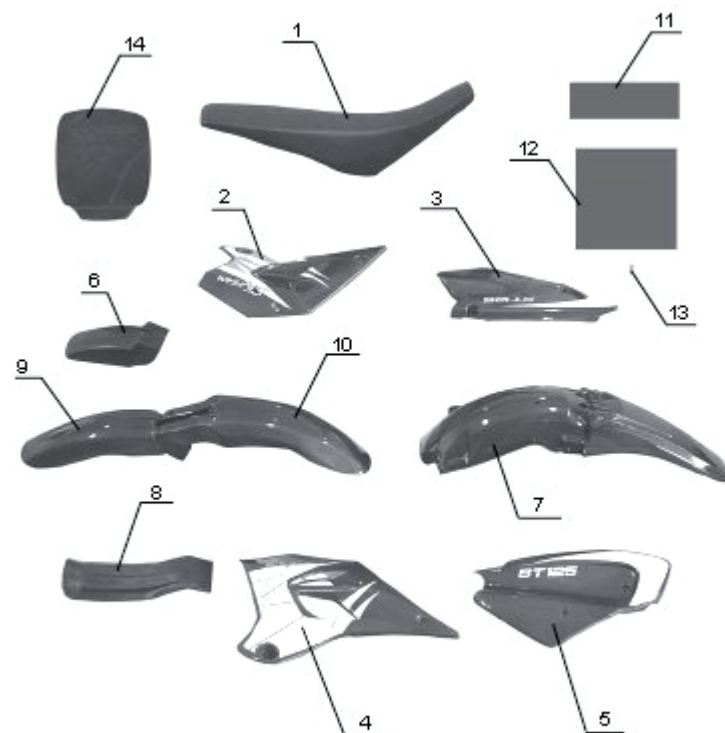
N°	Código	Description	Descripción	QTY
1-1	010100F1401-1	WHEEL RIM ASSY	CONJUNTO LLANTA DE RUEDA	1
1-2	010100F1401-2	WHEEL RIM ASSY	CONJUNTO LLANTA DE RUEDA	1
2-1	010100F1402-1	TIRE	NEUMATICO	1
2-2	010100F1402-2	TIRE	NEUMATICO	1
2-3	010100F1402-3	INNER TUBE	TUBO INTERIOR	1
2-4	010100F1402-4	BAND RIM	LLANTA	1
2-5	010100F1402-5	INNER TUBE	TUBO INTERIOR	1
2-6	010100F1402-6	BAND RIM	LLANTA	1
3-1	010100F1403-1	WHEEL RIM	LLANTA DE RUEDA	1
3-2	010100F1403-2	WHEEL RIM	LLANTA DE RUEDA	1
8-1	010100F1408-1	SPOKE ( R )	RADIO DE RUEDA DERECHA	18
8-2	010100F1408-2	SPOKE ( R )	RADIO DE RUEDA DERECHA	18
9-1	010100F1409-1	SPOKE ( L )	RADIO DE RUEDA IZQUIERDA	18
9-2	010100F1409-2	SPOKE ( L )	RADIO DE RUEDA IZQUIERDA	18



N°	Código	Description	Descripción	QTY
1	010100F1501	RELAY, START	RELE, ARRANQUE	1
2	010100F1502	CDI	CDI	1
3	010100F1503	IGNITION COIL ASSY	CONJUNTO BOBINA DEL ENCENDIDO	1
4	010100F1504	SCREW	TORNILLO	2
5	010100F1505	LOCK WASHER	ARANDELA BLOCANTE	2
6	010100F1506	RECTIFIER	RECTIFICADOR	1
7	010100F1507	BOLT	TORNILLO	2
8	010100F1508	WIRE HARNESS ASSY	CONJUNTO DEL CABLEADO	1
8-0	010100F1508-0	WIRE HARNESS ASSY	CONJUNTO DEL CABLEADO	1
8-1	010100F1508-1	CLIP	PRESILLA	4
8-2	010100F1508-2	SCREW	TORNILLO	1
9	010100F1509	SIDE STAND SWITCH	INTERRUPTOR	1
10	010100F1510	BOLT	TORNILLO	1
11	010100F1511	FUSE	FUSIBLE	1
12	010100F1512	HORN ASSY	CONJUNTO DE LA BOCINA	1
13	010100F1513	BOLT	TORNILLO	1
14	010100F1514	RELAY, WINKER	RELE,INTERMITENTE	1



N°	Código	Description	Descripción	QTY
1	010100F1601	HANDLE BAR	MANILLAR	1
2	010100F1602	THROTTLE CABLE	CABLE DEL ACELERADOR	1
3	010100F1603	CLUTCH CABLE	CABLE DEL EMBRAGUE	1
4	010100F1604	LEFT GRIP	PUÑO IZQUIERDO	1
5	010100F1605	RIGHT HANDLE SWITCH	INTERRUPTOR MANILLAR DERECHO	1
5-1	010100F1605-1	RIGHT HANDLE SWITCH	INTERRUPTOR MANILLAR DERECHO	1
6	010100F1606	LEFT HANDLE SWITCH	INTERRUPTOR MANILLAR IZQUIERDO	1
7	010100F1607	CLUTCH LEVER	PALANCA EMBRAGUE	1
8	010100F1608	THROTTLE HANDLE ASSY	PUÑO DEL ACELERADOR	1
9	010100F1609	REAR MIRROR (L)	ESPEJO TRASERO (IZQ)	1
10	010100F1610	REAR MIRROR (R)	ESPEJO TRASERO (DCHO)	1





**F17 | PLASTIC PARTS / PLASTICOS**

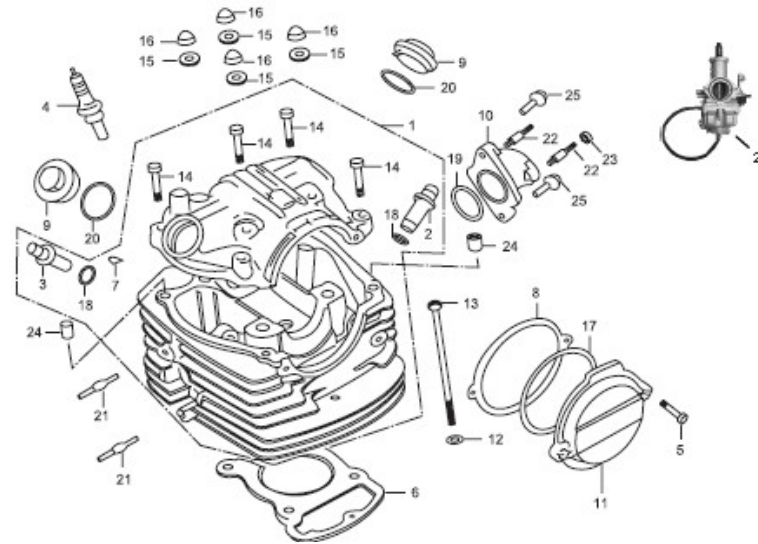
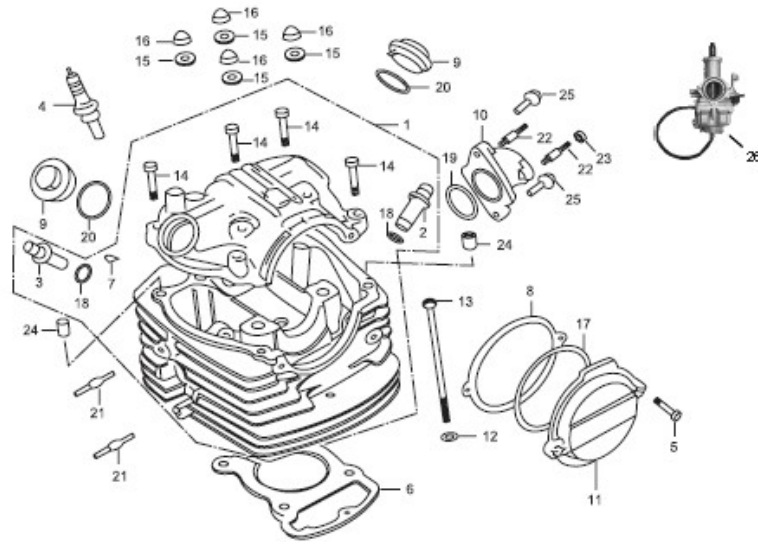
N°	Código	Description	Descripción	QTY
1	010100F1701	SEAT ASSY	CONJUNTO DEL ASIENTO	1
2	010101F1702	FUEL TANK COVER (R) RED	CUBIERTA DEPOSITO GASOLINA ROJO	1
3	010101F1703	RIGHT SIDE FENDER RED	GUARDABARROS LATERAL DERECHO ROJO	1
4	010101F1704	FUEL TANK COVER (L) RED	CUBIERTA DEPOSITO GASOLINA (IZQ) ROJO	1
5	010101F1705	LEFT SIDE FENDER RED	GUARDABARROS LATERAL IZQUIERDO ROJO	1
6	010101F1706	1/2 FRONT FENDER SM RED	1/2 GUARDABARROS DELANTERO SM ROJO	1
7	010101F1707	REAR FENDER RED	GUARDABARROS TRASERO ROJO	1
8	010101F1708	REAR FENDER RED	GUARDABARROA TRASERO ROJO	1
9	010101F1709	FRONT FENDER RED	GUARDABARROS DELANTERO ROJO	1
10	010101F1710	FRONT FENDER (REAR) RED	GUARDABARROS DELANTERO (TRASERO) ROJO	1
11	010100F1711	NAME PLATE	PLACA NOMBRE	1
12	010100F1712	ANTI-TAMPERING PLATE	PLACA ANTIROBO	1
13	010100F1713	RIVER	REMACHE	4
14	010100F1714	CODE PLATE	PLACA CODIGO	1
15	010100F1715	UPPER SUPPORT	SOPORTE SUPERIOR	1
16	010100F1716	DOWN SUPPORT	SOPORTE INFERIOR	1

# NJM 200

## Parts list / Despiece



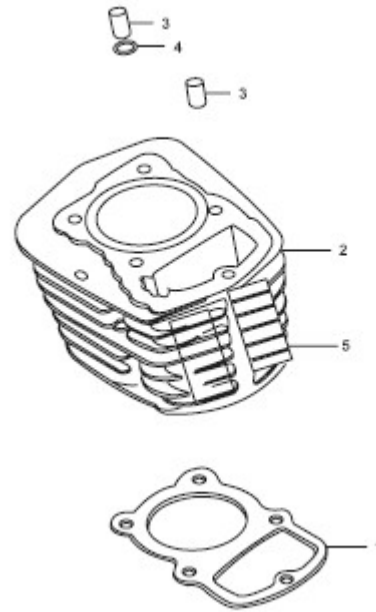
# M01 CYLINDER HEAD / CULATA



**M01**
**CYLINDER HEAD ASSY / CONJUNTO CULATA**

N°	Código	Description	Descripción	QTY
1	010100M0101	HEAD COMP, CYLINDER	COMPOSICION CABEZA CILINDRO	1
2	010100M0102	GUIDE, IN. VALVE	GUIA INTERIOR VALVULA	1
3	010100M0103	GUIDE, EX. VALVE	GUIA EXTERIOR VALVULA	1
4	010100M0104	SPARK PLUG	BUJIA	1
5	010100M0105	BOLT FLANGE 6X20	TORNILLO REBORDE 6x20	2
6	010100M0106	GASKET, CYLINDER HEAD	JUNTA, CABEZA CILINDRO	1
7	010100M0107	RUBBER, STEM	GOMA VASTAGO	1
8	010100M0108	GASKET	JUNTA	1
9	010100M0109	CAP, TAPPET ADJUSTING HOLE	TAPON, AGUJERO DE AJUSTE	2
10	010100M0110	PIPE, INLET ASSY	TUBO, CONJUNTO ADMISION	1
11	010100M0111	COVER, L. CYLINDER HEAD SIDE	CUBIERTO / TAPA PARTE SUPERIOR CILINDRO	1
12	010100M0112	WASHER	ARANDELA	1
13	010100M0113	BOLT, HEX 6 X 116	TORNILLO HEXAGONAL 6x116	1
14	010100M0114	BOLT, HEX. 6 X 35	TORNILLO HEXAGONAL 6x35	4
15	010100M0115	WASHER	ARANDELA	4
16	010100M0116	NUT	TUERCA	4
17	010100M0117	O-RING 75 X 2.5	JUNTA TORICA 75x2,5	1
18	010100M0118	O-RING 10 X 1.6	JUNTA TORICA 10x1,6	2
19	010100M0119	O-RING 33.5 X 3	JUNTA TORICA 33,5x3	1
20	010100M0120	O-RING 35 X 3	JUNTA TORICA 35x3	2
21	010100M0121	STUD M6 X 35	ESPARRAGO M6x35	2
22	010100M0122	STUD M6 X 28	ESPARRAGO M6x28	2
23	010100M0123	NUT 6	TUERCA	1
24	010100M0124	PIN 8 X 14	CLAVIJA	2
25	010100M0125	BOLT	TORNILLO	2
26	010100M0126	CARBURATOR ASSY	CONJUNTO CARBURADOR	1

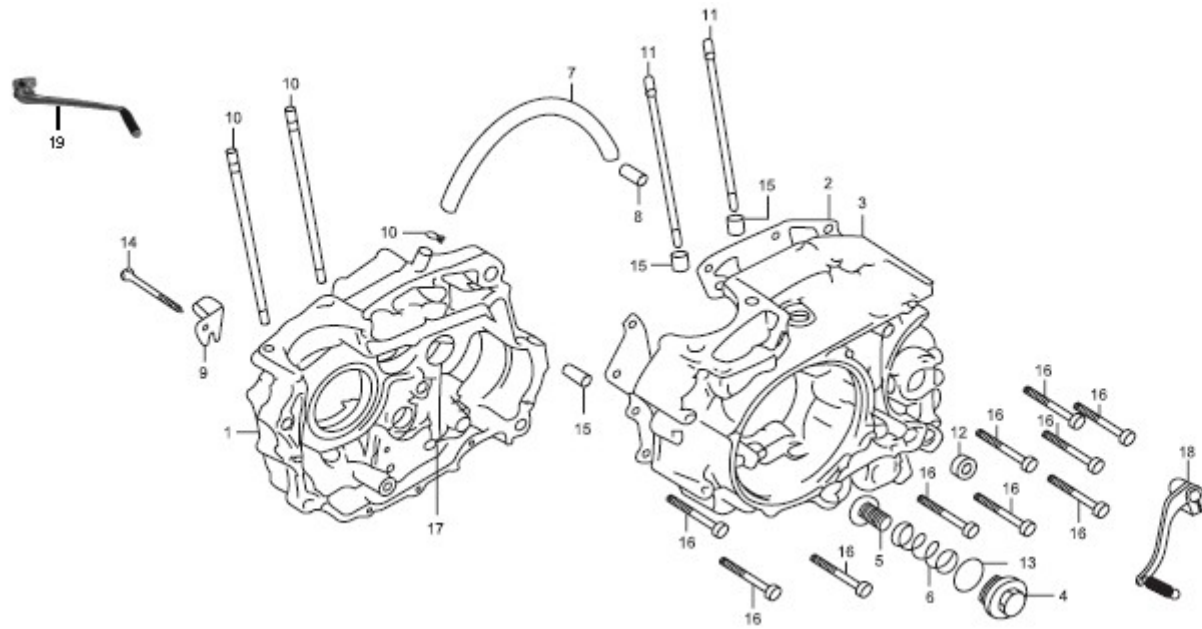
M02 | CYLINDER / CILINDRO



**M02 | CYLINDER / CILINDRO**

N°	Código	Description	Descripción	QTY
1	010100M0201	GASKET CYLINDER	JUNTA CILINDRO	1
2	010100M0202	CYLINDER	CILINDRO	1
3	010100M0203	PIN, POWEL 10 X 20	CLAVIJA	2
4	010100M0204	O-RING 10 X 1.6	JUNTA TORICA 10x1,6	1
5	010100M0205	CUSHION, CYLINDER	COJIN CILINDRO	8

M03 PAN SET / CONJUNTO CARTERES

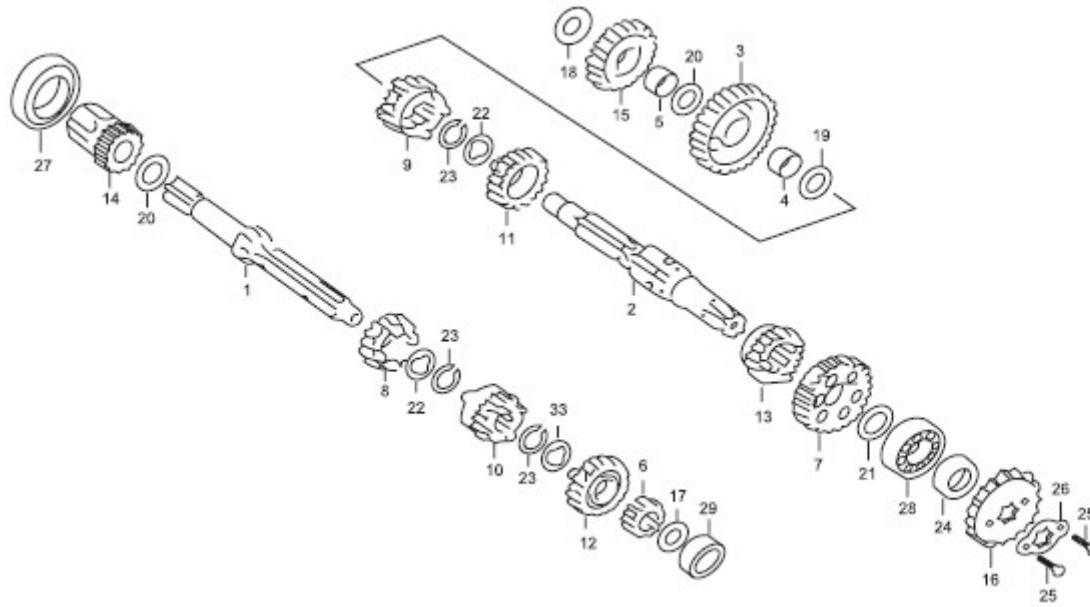


**M03**
**PAN SET / CONJUNTO CARTERES**

N°	Código	Description	Descripción	QTY
1	010100M0301	CRANKCASE COMP, R ASSY	COMPONENTE CARTER, CONJUNTO DERECHO	1
2	010100M0302	GASKET, CRANKCASE	JUNTA CARTER	1
3	010100M0303	CRANK CASE COMP, L ASSY	COMPONENTE CARTER, CONJUNTO IZQUIERDO	1
4	010100M0304	CAP, OIL FILTER	TAPON FILTRO ACEITE	1
5	010100M0305	SCREEN, OIL FILTER	"PANTALLA" FILTRO ACEITE	1
6	010100M0306	SPRING	MUELLE	1
7	010100M0307	TUBE	TUBO	1
8	010100M0308	CLAMPER, TUBE	ABRAZADERA TUBO	1
9	010100M0309	PLATE	DISCO	1
10	010100M0310	BOLT A CYLINDER STUD	ESPARRAGO CILINDRO TORNILLO A	2
11	010100M0311	BOLT B CYLINDER STUD	ESPARRAGO CILINDRO TORNILLO B	2
12	010100M0312	OIL SEAL 14 X 28 X 7	JUNTA ACEITE 14x28x7	1
13	010100M0313	O-RING 35 X 3	JUNTA TORICA 35x3	1
14	010100M0314	BOLT HEX M6 X 60	TORNILLO HEXAGONAL M6x60	1
15	010100M0315	DOWEL PIN	CLAVIJA DE POSICION	4
16	010100M0316	BOLT, FLANGE 6 X 50	TORNILLO REBORDE 6x50	10
17	010100M0317	NEEDLE BEARING	COJINETE DE AGUJAS	1
18	010100M0318	SHIFT PEDAL	PEDAL CAMBIOS	1
19	010100M0319	KICK STARTER	PALANCA ARRANQUE PIE	1



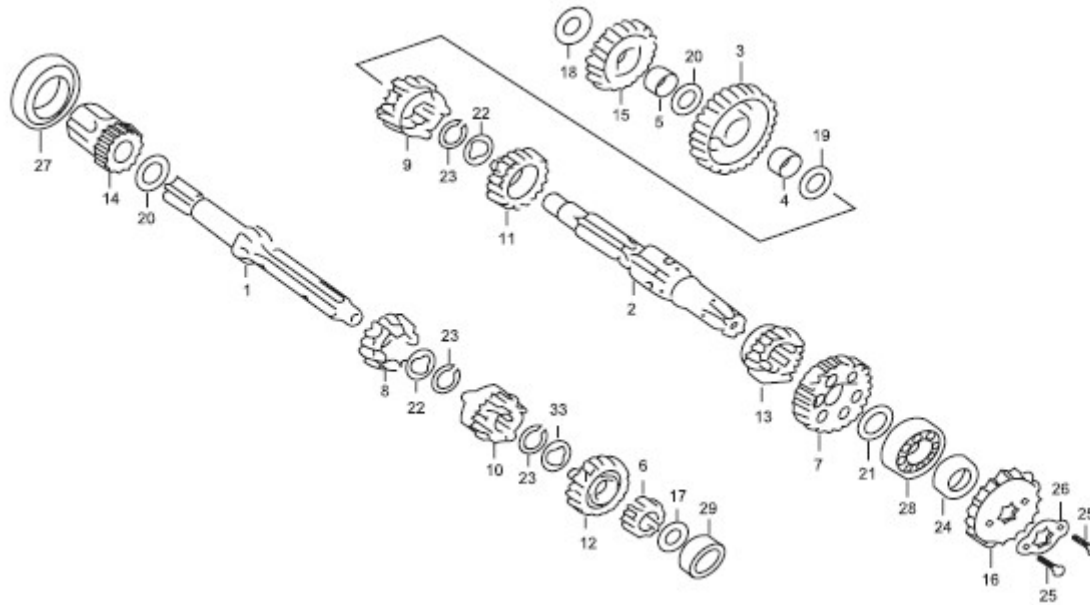
**M04 | GEAR PINION / CAMBIO PIÑONES**



**M04 | GEAR PINION / CAMBIO PIÑONES**

N°	Código	Description	Descripción	QTY
1	010100M0401	MAINSHAFT	EJE PRINCIPAL	1
2	010100M0402	COUNTER SHAFT	CONTRAEJE	1
3	010100M0403	GEAR, COUNTERSHAFT LOW	MARCHA, CONTRAEJE BAJO	1
4	010100M0404	BUSH	COJINETE / CASQULLO	1
5	010100M0405	BUSH	COJINETE / CASQULLO	1
6	010100M0406	GEAR, MAINSHAFT SECOND	MARCHA, SEGUNDO EJE PRINCIPAL	1
7	010100M0407	GEAR, COUNTERSHAFT SECOND	MARCHA, SEGUNDO CONTRAEJE	1
8	010100M0408	GEAR, MAINSHAFT THIRD	MARCHA, TERCER EJE PRINCIPAL	1
9	010100M0409	GEAR, COUNTERSHAFT THIRD	MARCHA, TERCER CONTRAEJE	1
10	010100M0410	GEAR, MAINSHAFT FOURTH	MARCHA, CUARTO EJE PRINCIPAL	1
11	010100M0411	GEAR, COUNTERSHAFT FOURTH	MARCHA, CUARTO CONTRAEJE	1
12	010100M0412	GEAR, MINSHAFT FIFTH	MARCHA QUINTO EJE PRINCIPAL	1
13	010100M0413	GEAR, COUNTERSHAFT FIFTH	MARCHA QUINTO CONTRAEJE	1
14	010100M0414	GEAR, STARTER ASSY	MARCHA CONJUNTO ARRANQUE	1
15	010100M0415	GEAR	MARCHA	1
16	010100M0416	SPROCKET, DRIVE	ATRACCIÓN RUEDA DENTADA	1

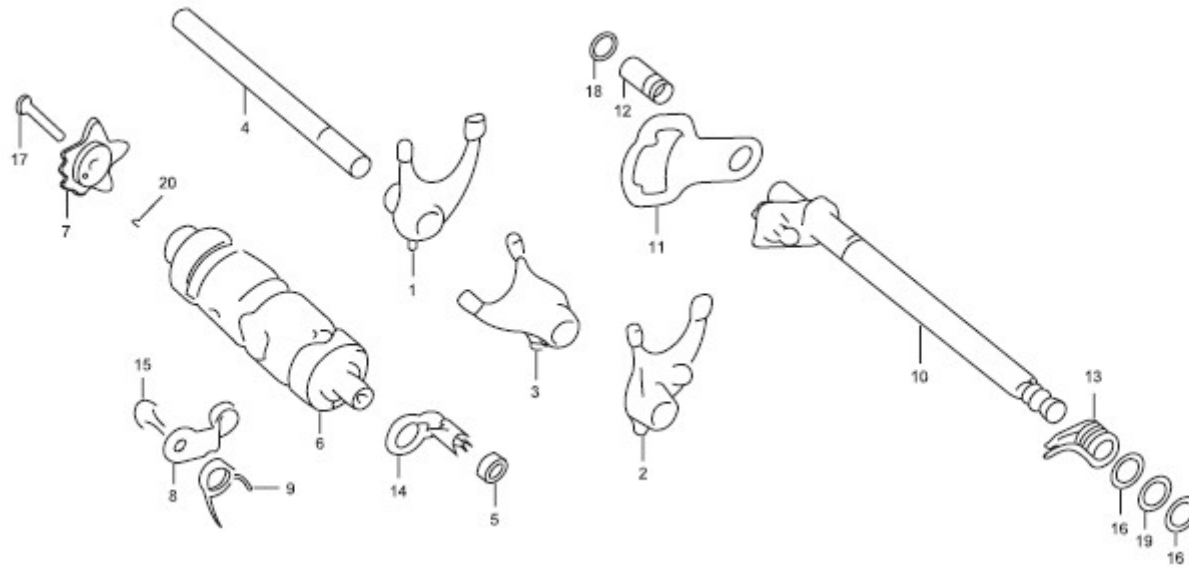
**M04 | GEAR PINION / CAMBIO PIÑONES**



**M04 | GEAR PINION / CAMBIO PIÑONES**

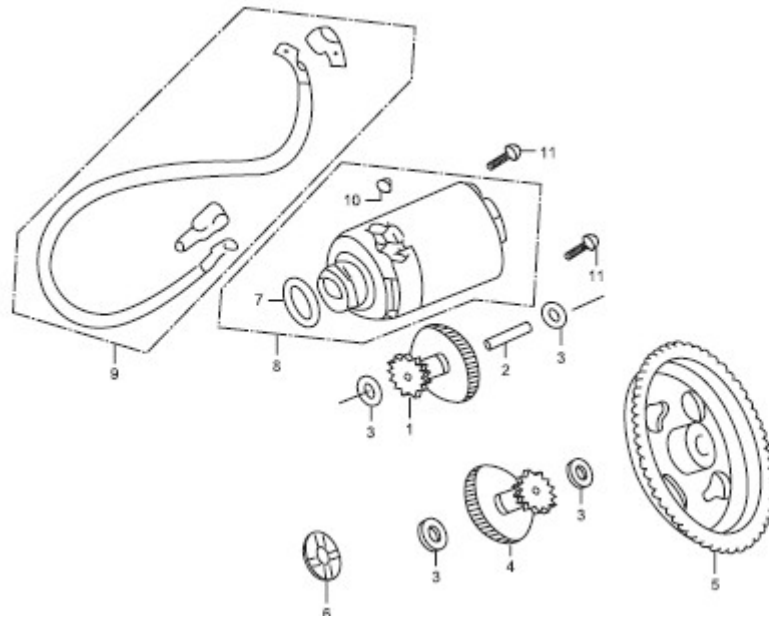
N°	Código	Description	Descripción	QTY
17	010100M0417	WASHER, THRUST	ARANDELA DE EMPUJE	1
18	010100M0418	WASHER, THRUST	ARANDELA DE EMPUJE	1
19	010100M0419	WASHER, THRUST	ARANDELA DE EMPUJE	1
20	010100M0420	WASHER, THRUST	ARANDELA DE EMPUJE	1
21	010100M0421	WHASER	ARANDELA	1
22	010100M0422	WASHER, SPLINE	ARANDELA ACANALADA	1
23	010100M0423	CIRCLIP	CIRCLIP	2
24	010100M0424	OIL SEAL 20 X 34 X 7	JUNTA ACEITE 20x34x7	1
25	010100M0425	BOLT HEX 6 X 10	TORNILLO HEXAGONAL 6x10	2
26	010100M0426	PLATE, DRIVE SPROCKET FIXING	DISCO, FIJACION RUEDA DENTADA ATRACCION	1
27	010100M0427	BEARING, RADIAL BALL 106	COJINETE BOLA RADIAL 106	1
28	010100M0428	BEARING, RADIAL BALL 202	COJINETE BOLA RADIAL 202	1
29	010100M0429	BEARING, RADIAL BALL 204	COJINETE BOLA RADIAL 204	1

M05 | SELECTOR / SELECTOR



**M05 | SELECTOR / SELECTOR**

N°	Código	Description	Descripción	QTY
1	010100M0501	FORK, GEARSHIFT	HORQUILLA CAMBIO MARCHAS	1
2	010100M0502	FORK, GEARSHIFT	HORQUILLA CAMBIO MARCHAS	1
3	010100M0503	FORK, GEARSHIFT	HORQUILLA CAMBIO MARCHAS	1
4	010100M0504	SHAFE, GEARSHIFT, FORK	EJE CAMBIO MARCHAS HORQUILLA	1
5	010100M0505	NUT	TUERCA	1
6	010100M0506	DRUM, GEARSHIFT	TAMBOR CAMBIO MARCHAS	1
7	010100M0507	PLATE, GEARSHIFT DRUM	DISCO CAMBIO MARCHAS TAMBOR	1
8	010100M0508	SHIFT DRUM STOPPER	CAMBIO TAMBOR	1
9	010100M0509	SPRING, SHIFT DRUM STOPPER	MUELLE CAMBIO TAMBOR	1
10	010100M0510	SPINDLE, GEARSHIFT ASSY	ARBOL, CONJUNTO CAMBIO MARCHAS	1
11	010100M0511	PLATE, GEARSHIFT	DISCO CAMBIO MARCHAS	1
12	010100M0512	SPRING	MUELE	1
13	010100M0513	SPRING GEARSHIFT RETURN	MUELLE RETROCESO CAMBIO MARCHAS	1
14	010100M0514	CONTACT ASSY, SWITCH	CONJUNTO CONTACTO INTERRUPTOR	1
15	010100M0515	BOLT, HEX 6 X 20	TORNILLO HEXAGONAL 6x20	1
16	010100M0516	WHASER, THRUST	ARANDELA DE EMPUJE	2
17	010100M0517	BOLT HEX 6 X 35	TORNILLO HEXAGONAL 6x35	1
18	010100M0518	CIRCLIP 12	CIRCLIP 12	1
19	010100M0519	CIRCLIP 14	CIRCLIP 14	1
20	010100M0520	PIN DOWEL, 4 X 10	CLAVIJA DE POSICION	1

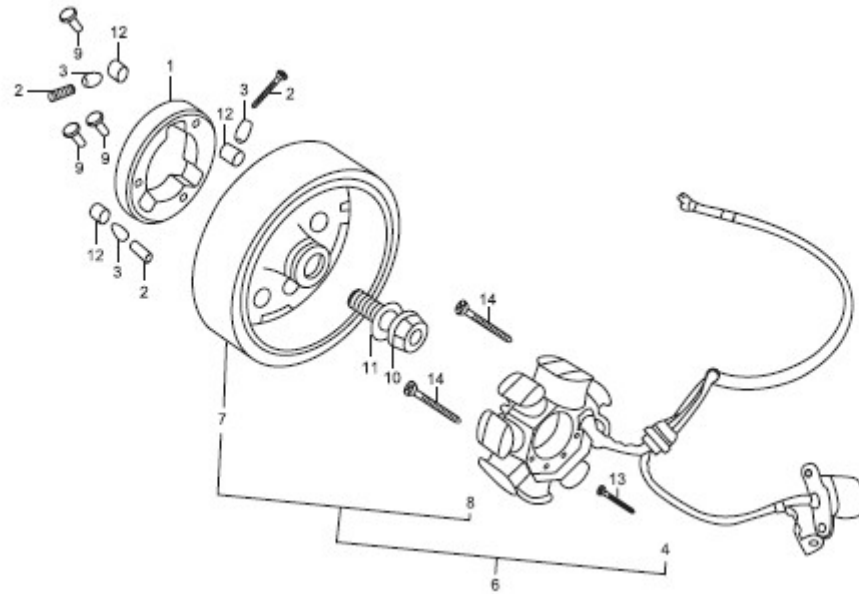


N°	Código	Description	Descripción	QTY
1	010100M0601	GEAR	MARCHA	1
2	010100M0602	GEARSHAFT	EJE MARCHAS	1
3	010100M0603	CIRCLIP	CIRCLIP	4
4	010100M0604	GEAR	MARCHA	1
5	010100M0605	PLATE GEAR	DISCO MARCHA	1
6	010100M0606	CIRCLIP	CIRCLIP	1
7	010100M0607	O-RING	JUNTA TORICA	1
8	010100M0608	STARTING MOTOR	ARRANQUE MOTOR	1
9	010100M0609	CABLE, STARTING MOTOR	CABLE MOTOR ARRANQUE	1
10	010100M0610	BOLT 5 X 8	TORNILLO 5x8	1
11	010100M0611	BOLT HEX	TORNILLO HEXAGONAL	2



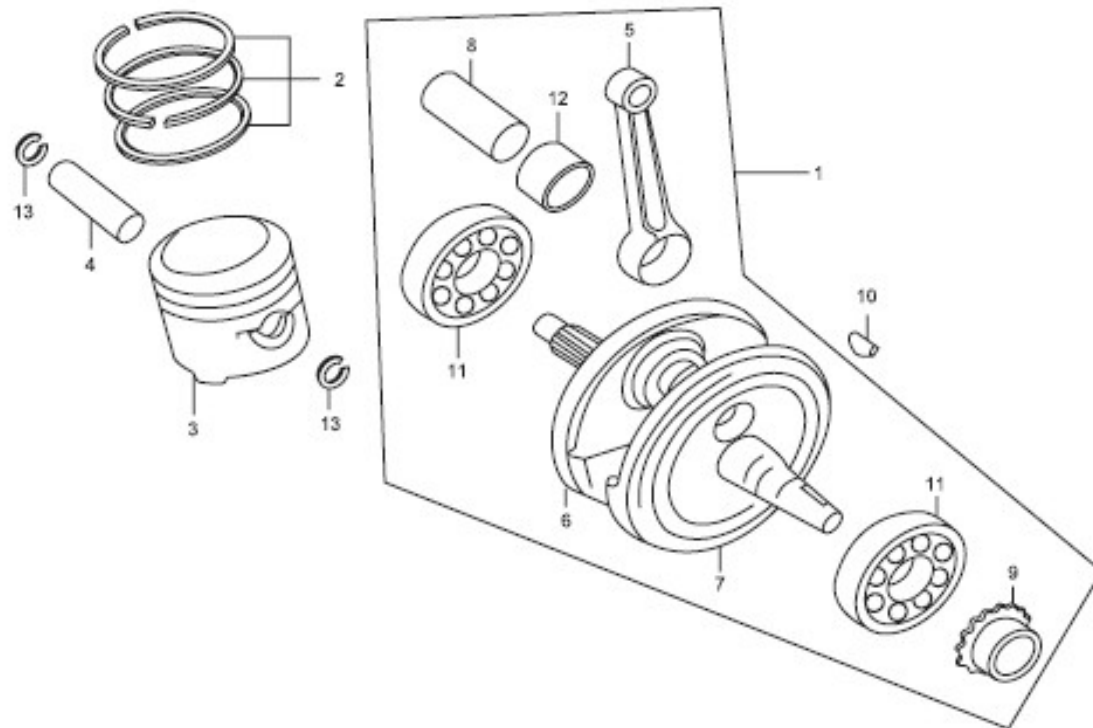
M07

ROTOR / ROTOR



**M07 ROTOR / ROTOR**

N°	Código	Description	Descripción	QTY
1	010100M0701	STARTER CLUTCH OUTER ASSY	CONJUNTO EMBRAGUE ARRANQUE EXTERIOR	1
2	010100M0702	SPRING CLUTCH ROLLER	MUELLE RODILLO EMBRAGUE	3
3	010100M0703	COVER, SPRING CLUTCH ROLLER	CUBIERTA MUELLE RODILLO EMBRAGUE	1
4	010100M0704	RUBBER	GOMA	1
5	010100M0705	BODY	CUERPO	1
6	010100M0706	GENERATOR	GENERADOR	1
7	010100M0707	CLY WHEEL COMP	COMPONENTE RUEDA	1
8	010100M0708	STATOR COMP	COMPONENTE ESTATOR	1
9	010100M0709	BOLT	TORNILLO	2
10	010100M0710	BOLT HEX	TORNILLO HEXAGONAL	1
11	010100M0711	WASHER	ARANDELA	1
12	010100M0712	ROLLER	RODILLO	3
13	010100M0713	BOLT	TORNILLO	2
14	010100M0714	BOLT	TORNILLO	2

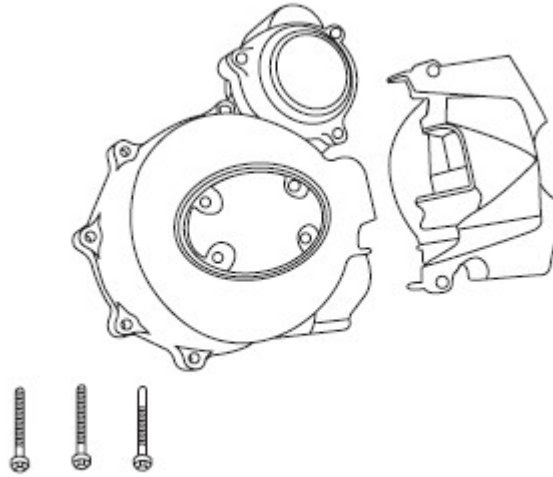


**M08**
**PISTON CONNECTING ROD / CIGUEÑAL – BIELA - PISTON**

N°	Código	Description	Descripción	QTY
1	010100M0801	CRANKSHAFT COMP	COMPONENTE CARDAN	1
2	010100M0802	RING SET, PISTON	PISTON CONJUNTO ANILLOS	1
3	010100M0803	PISTON	PISTON	1
4	010100M0804	PIN, PISTON	CLAVIJA, PISTON	1
5	010100M0805	ROD, CONNECTING	CONEXION BIELA	1
6	010100M0806	CRANKSHFAT COMP, R	COMPONENTE CARTER DERECHO	1
7	010100M0807	CRANKSHAFT COMP. L	COMPONENTE CARTER IZQUIERDO	1
8	010100M0808	PIN, CRANK	CLAVIJA CARTER	1
9	010100M0809	SPROCKET, TIMING	RUEDA DENTADA DE DISTRIBUCION	1
10	010100M0810	KEY, WOODRUFF	CHAVETA WOODRUFF	1
11	010100M0811	BEARING, RADIAL BALL	COJINETE BOLA RADIAL	2
12	010100M0812	NEEDIE BEARING	AGUJA COJINETE	1
13	010100M0813	CLIP, PISTON PIN	CLIP, CLAVIJA PISTON	2

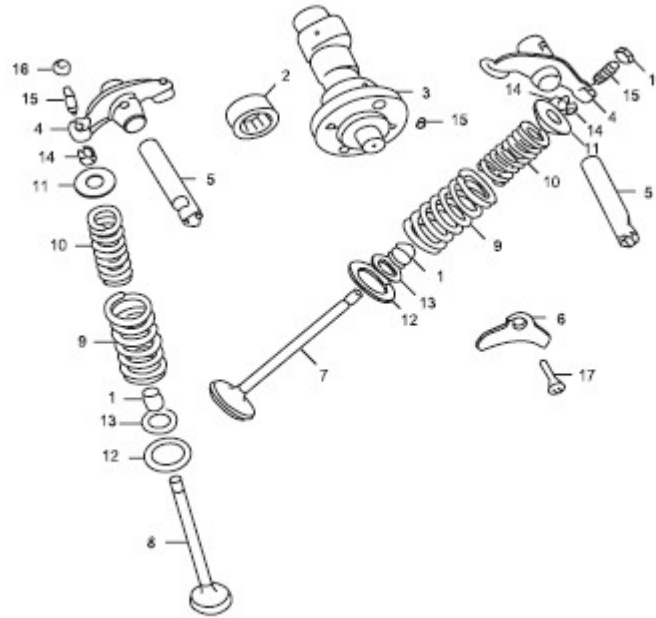
M09

ROTOR COVER / TAPA ROTOR



**M09 ROTOR COVER / TAPA ROTOR**

N°	Código	Description	Descripción	QTY
1	010100M0901	COVER L CRANKCASE	CUBIERTA IZQUIERDA CARTER	1
2	010100M0902	COVER L RR	CUBIERTA	1
3	010100M0903	BOLT HEX	TORNILLO HEXAGONAL	3
4	010100M0904	COVER, GEAR	CUBIERTA MARCHA	1
5	010100M0905	CAP A	TAPON A	1
6	010100M0906	O-RING	JUNTA TORICA	1
7	010100M0907	O-RING 63 X 3	JUNTA TORICA 63x3	1
8	010100M0908	O-RING	JUNTA TORICA	1
9	010100M0909	CAP B	TAPON B	1
10	010100M0910	GASKET L GRANKCASE	JUNTA IZQUIERDA CARTER	1
11	010100M0911	BOLT, HEX	TORNILLO HEXAGONAL	4
12	010100M0912	BOLT, HEX	TORNILLO HEXAGONAL	2
13	010100M0913	BOLT, HEX	TORNILLO HEXAGONAL	4
14	010100M0914	BOLT, HEX	TORNILLO HEXAGONAL	2



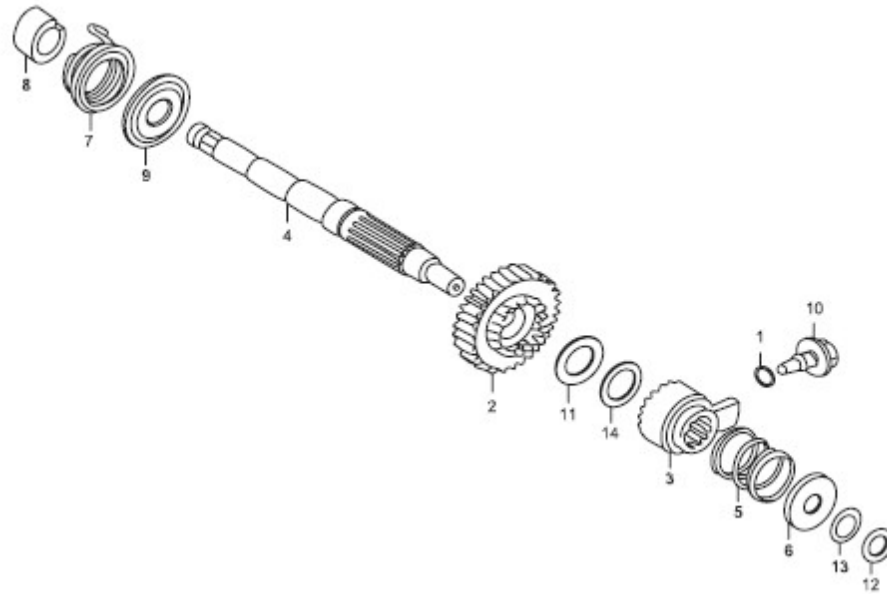
**M10**
**VALVES CAMSHAFT / ARBOL DE LEVAS - VALVULAS**

N°	Código	Description	Descripción	QTY
1	010100MI001	SEAL, VALVE STEM	RETEN VASTAGO DE VALVULA	2
2	010100MI002	BEARING ROLL	COJINETE DE RODILLOS	1
3	010100MI003	CAMSHAFT ASSY	CONJUNTO ARBOL DE LEVAS	1
4	010100MI004	ROCKER ARM	BALANCIN	2
5	010100MI005	ROCKER ARM	BALANCIN	2
6	010100MI006	VALVE STOPPER	(que para) VALVULA / detiene	1
7	010100MI007	VALVE INLET	ADMISION VALVULA	1
8	010100MI008	VALVE EXHAUST	ESCAPE VALVULA	1
9	010100MI009	SPRING, VALVE OUTER	MUELLE VALVULA EXTERIOR	2
10	010100MI010	SPRING, VALVE INNER	MUELLE VALVULA INTERIOR	2
11	010100MI011	SEAT	ASIENTO	2
12	010100MI012	SEAT, OUTER	ASIENTO EXTERIOR	2
13	010100MI013	SEAT, INNER	ASIENTO INTERIOR	2
14	010100MI014	VALVE CLAMP	BRAZADERA VALVULA	4
15	010100MI015	COFTER, VALVE	VALVULA	2
16	010100MI016	VALVE CLEARANCE ADJUSTING NUT	TUERCA DE AJUSTE, DESPEJE VALVULA	2
17	010100MI017	SCREW	TORNILLO	1



M11

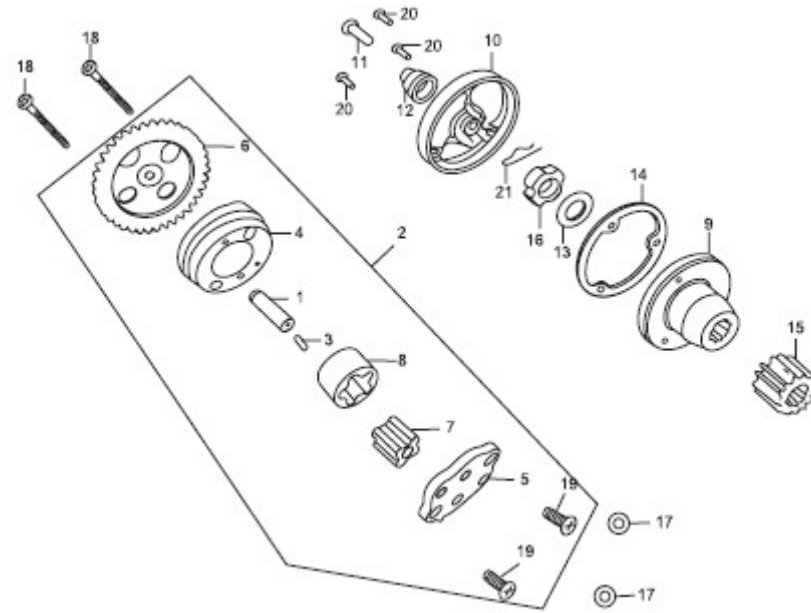
STARTING ASSY / CONJUNTO PUESTA EN MARCHA



**M11**
**STARTING ASSY / CONJUNTO PUESTA EN MARCHA**

N°	Código	Description	Descripción	QTY
1	010100MI101	O-RING 11.8 X 2.65	TORICA 11,8x2,65	1
2	010100MI102	GEAR, KICK STARTER	MARCHA, PALANCA DE ARRANQUE	1
3	010100MI103	RACHET, KICK STARTER	TRINQUETE ARRANQUE PIE	1
4	010100MI104	SPINDLE, KICK STARTER	ARBOL PALANCA ARRANQUE	1
5	010100MI105	SPRING, RACHET	MUELLE TRINQUETE	1
6	010100MI106	CIRCLIP	CIRCLIP	1
7	010100MI107	SPRING, KICK STARTER	MUELLE PALANCA ARRANQUE	1
8	010100MI108	SPRING INNER BUSH	MUELLE COJINETE INTERNO	1
9	010100MI109	RETAINER, KICK SPRING	RETEN MUELLE PEDAL ARRANQUE	1
10	010100MI110	BOLT, HEX	TORNILLO HEXAGONAL	1
11	010100MI111	THRUST WASHER	ARANDELA DE EMPUJE	1
12	010100MI112	THRUST WASHER	ARANDELA DE EMPUJE	1
13	010100MI113	CIRCLIP	CIRCLIP	1
14	010100MI114	SPRING WASHER	ARANDELA MUELLE	1

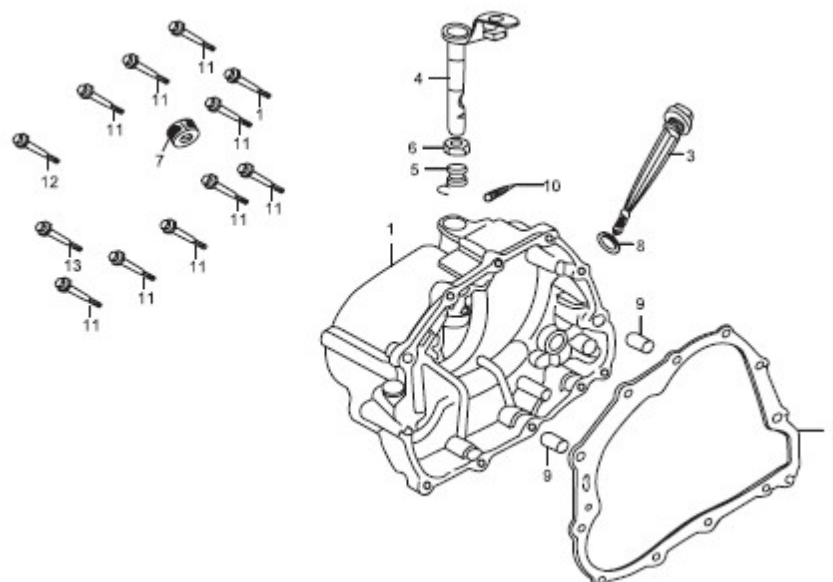
M12 OIL PUMP / BOMBA ACEITE



**M12 OIL PUMP / BOMBA ACEITE**

N°	Código	Description	Descripción	QTY
1	010100MI201	DRIVESHAFT OIL PUMP	EJE TRACCION BOMBA ACEITE	1
2	010100MI202	PUMP ASSY OIL	CONJUNTO BOMBA ACEITE	1
3	010100MI203	PIN	CLAVIJA	1
4	010100MI204	BODY OIL PUMP	CUERPO BOMBA ACEITE	1
5	010100MI205	COVER OIL PUMP	CUBIERTA BOMBA ACEITE	1
6	010100MI206	GEAR OIL PUMP	BOMBA ACEITE MARCHAS	1
7	010100MI207	ROTOR OIL PUMP INNER	BOMBA ACEITE ROTOR INTERIOR	1
8	010100MI208	ROTOR OIL	ACEITE ROTOR	1
9	010100MI209	BODY OIL FILTER	CUERPO FILTRO DE ACEITE	1
10	010100MI210	GASS OIL	ACEITE	1
11	010100MI211	COVER OIL FILTER	CUBIERTA FILTRO ACEITE	1
12	010100MI212	SPRING	MUELLE	1
13	010100MI213	WASHER FLYING	ARANDELA VOLANTE	1
14	010100MI214	GASKET	JUNTA	1
15	010100MI215	GEAR	MARCHA	1
16	010100MI216	NUT	TUERCA	1
17	010100MI217	O-RING	JUNTA TORICA	2
18	010100MI218	BOLT FLANGE 5 X 20	TORNILLO REBORDE 5x20	2
19	010100MI219	SCREW PAN 4 X 12	TORNILLO CARTER 4x12	2
20	010100MI220	SCREW PAN 5 X 12	TORNILLO CARTER 5x12	3
21	010100MI221	CLIP	PRESILLA	1

M13 CLUTCH COVER / TAPA EMBRAGUE

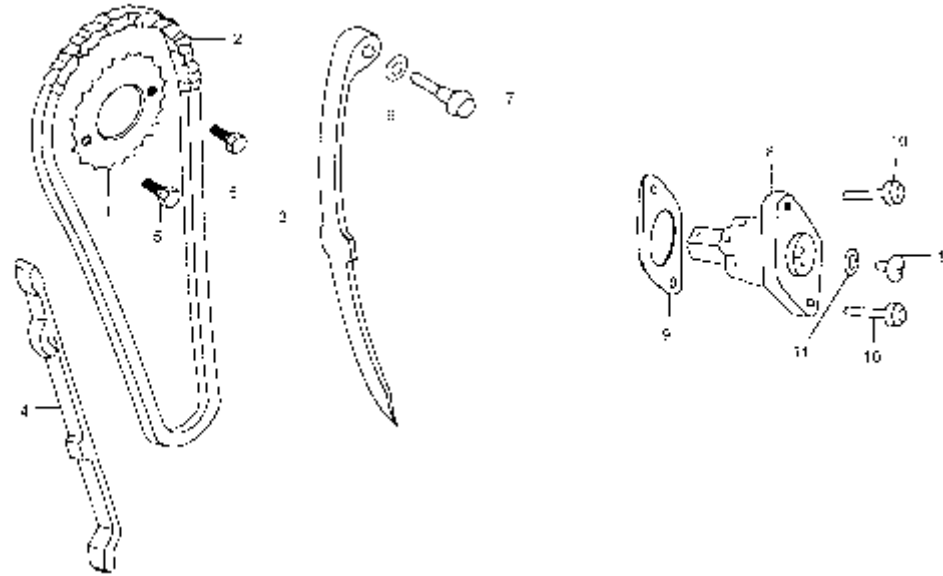


**M13 CLUTCH COVER / TAPA EMBRAGUE**

N°	Código	Description	Descripción	QTY
1	010100MI301	COVER, R, CRANKCASE	CUBIERTA DERECHA CARTER	1
2	010100MI302	GASKET, R, CRANKCASE COVER	JUNTA DERECHA CUBIERTA CARTER	1
3	010100MI303	GAUGE OIL LEVER	INDICADOR PALANCA ACERO	1
4	010100MI304	LEVER COMP CLUTCH	PALANCA COMPONENTE EMBRAGUE	1
5	010100MI305	SPRING	MUELLE	1
6	010100MI306	OIL SEAL	JUNTA ACEITE	1
7	010100MI307	OIL SEAL	JUNTA ACEITE	1
8	010100MI308	O-RING	JUNTA TORICA	1
9	010100MI309	PIN	CLAVIJA	1
10	010100MI310	PIN	CLAVIJA	2
11	010100MI311	BOLT, SPECIAL FLANGE	TORNILLO REBORDE	9
12	010100MI312	BOLT, SPECIAL FLANGE	TORNILLO REBORDE	1
13	010100MI313	BOLT, SPECIAL FLANGE	TORNILLO REBORDE	1

M14

DISTRIBUTION ASSY / CONJUNTO DISTRIBUCION

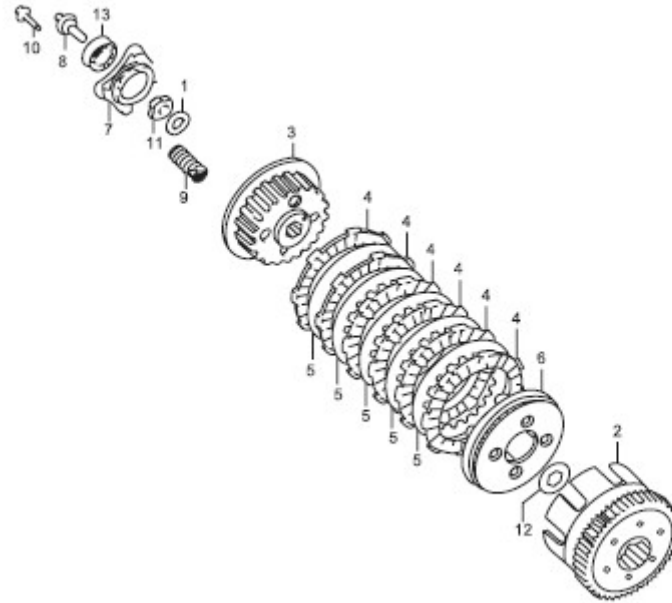


N°	Código	Description	Descripción	QTY
1	010100MI501	FLYING WASHER	ARANDELA VOLANTE	1
2	010100MI502	OUTER COMP CLUTCH	COMPONENTE EXTERIOR EMBRAGUE	1
3	010100MI503	CENTER CLUTCH	CENTRO EMBRAGUE	1
4	010100MI504	DISK CLUTCH FRICTION	DISCO FRICCION EMBRAGUE	6
5	010100MI505	PLATE CLUTCH	DISCO EMBRAGUE	5
6	010100MI506	PLATE CLUTCH PRESURE	PRESION DISCO EMBRAGUE	1
7	010100MI507	PLATE CLUTCH LIFTER	ELEVADOR DISCO EMBRAGUE	1
8	010100MI508	LEVER CLUTCH	PALANCA EMBRAGUE	1
9	010100MI509	SPRING CLUTCH	MUELLE EMBRAGUE	6
10	010100MI510	BOLT SPECIAL FLANGE	TORNILLO REBORDE	6
11	010100MI511	NUT	TUERCA	1
12	010100MI512	WASHER B SPLINE	ARANDELA ESTRIADA ACANALADA	1
13	010100MI513	BEARING	COJINETE	1



M15

CLUTCH / EMBRAGUE



**M15 CLUTCH / EMBRAGUE**

N°	Código	Description	Descripción	QTY
1	010100MI501	FLYING WASHER	ARANDELA VOLANTE	1
2	010100MI502	OUTER COMP CLUTCH	COMPONENTE EXTERIOR EMBRAGUE	1
3	010100MI503	CENTER CLUTCH	CENTRO EMBRAGUE	1
4	010100MI504	DISK CLUTCH FRICTION	DISCO FRICCION EMBRAGUE	6
5	010100MI505	PLATE CLUTCH	DISCO EMBRAGUE	5
6	010100MI506	PLATE CLUTCH PRESURE	PRESION DISCO EMBRAGUE	1
7	010100MI507	PLATE CLUTCH LIFTER	ELEVADOR DISCO EMBRAGUE	1
8	010100MI508	LEVER CLUTCH	PALANCA EMBRAGUE	1
9	010100MI509	SPRING CLUTCH	MUELLE EMBRAGUE	6
10	010100MI510	BOLT SPECIAL FLANGE	TORNILLO REBORDE	6
11	010100MI511	NUT	TUERCA	1
12	010100MI512	WASHER B SPLINE	ARANDELA ESTRIADA ACANALADA	1
13	010100MI513	BEARING	COJINETE	1



w w w . c l i p i c . c o m



c/ Terrassa, 5-7, 17800 Olot (Girona) Spain

T. 902 10 11 13

F. 972 27 26 21

e-mail: [info@clipic.com](mailto:info@clipic.com)