



PARTS LIST / DESPIECE

MECHA 125 CC
MECHA 125 CC
MECHA 125 CC



MECHA

Parts list / Despiece



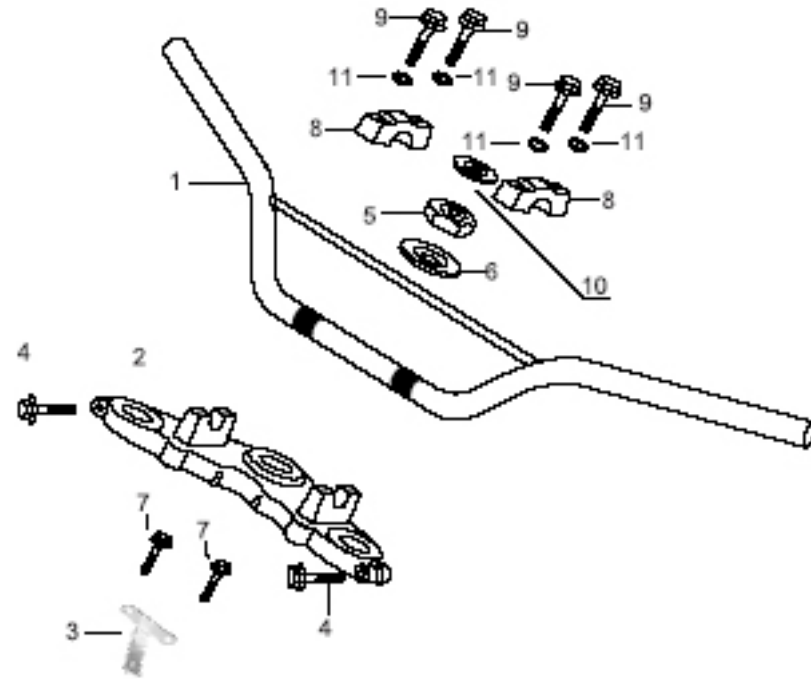
Frame / Chasis

F01	HANDLEBAR / CONJUNTO MANILLAR	P. 04
F02	STEERING STEM / TIJA INFERIOR	P. 06
F03	FRONT FENDER / GUARDABARROS DELANTERO	P. 08
F04	FRONT FORK / HORQUILLA DELANTERA	P. 10
F05	REAR BRAKE PANEL / CONJ. FRENO DELANTERO	P. 12
F06	FRONT WHEEL / RUEDA DELANTERA	P. 14
F07	REAR BRAKE PANEL / CONJUNTO FRENO TRASERO	P. 16
F08	REAR WHEEL / RUEDA TRASERA	P. 18
F09	REAL WHEEL / CONJUNTO RUEDA TRASERA	P. 20
F10	FUEL TANK / DEPOSITO - PLASTICOS	P. 24
F11	SEAT / SILLIN	P. 28
F12	SIDE COVER / TAPA DEPOSITO	P. 30
F13	AIR CLEANER / CAJA FILTRO AIRE	P. 32
F14	MUFFLER / SILENCIADOR	P. 34
F15	PEDAL / PEDAL ARRANQUE - CAMBIO	P. 36
F16	STEP / ESTRIBERAS	P. 38
F17	STAND / CABALLETE LATERAL	P. 40
F18	SWINGARM / BASCULANTE	P. 42
F19	REAR SHOCK ABSORBER / AMORTIGUADOR	P. 46
F20	REAR FENDER / GUARDABARROS TRASERO	P. 48
F21	HANDLE SWITCH / ELECTRICOS – VARIOS MANDOS	P. 50
F22	FRAME / CHASIS PRINCIPAL	P. 52

Engine / Motor

M01	CYLINDER HEAD / CULATA	P. 55
M02	CYLINDER / CILINDRO	P. 57
M03	CLUTCH COVER / TAPA EMBRAGUE	P. 59
M04	MAIN CRANCASES / CARTERES CENTRAL	P. 61
M05	STEERING COVER / TAPA VOLANTE – PIÑON	P. 65
M06	CRANCKSHAFT – ROD / CONJUNTO CIGUEÑAL –BIELA	P. 67
M07	DISTRIBUTION ASSY – VALVES	P. 69
M08	OIL PUMP / BOMBA ACEITE	P. 71
M09	CLUTCH / EMBRAGUE	P. 73
M10	GEAR CHANGES – PINION – AXES / CAMBIO – PIÑONES - EJES	P. 75
M11	SELECTOR / SELECTOR	P. 79
M12	STARTING ENGINE / MOTOR ARRANQUE	P. 81
M13	CARBURETOR / CARBURADOR	P. 83

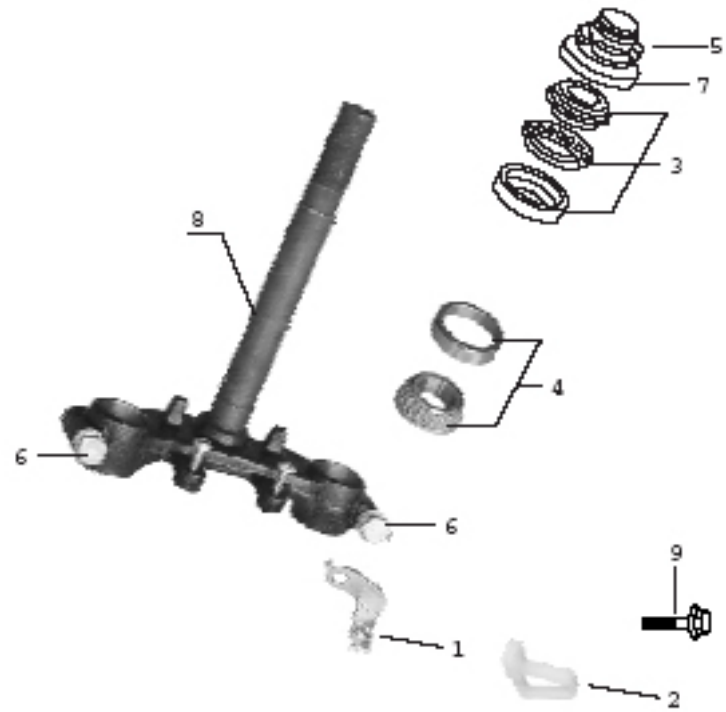
F01 | HANDLEBAR / CONJUNTO MANILLAR



F01 | HANDLEBAR / CONJUNTO MANILLAR

N°	Código	Description	Descripción	QTY
1	010200F0101	HANDLEBAR	MANILLAR	1
2	010200F0102	BRIDGE. FORK TOP	TIJA SUPERIOR	1
3	010200F0103	NUMBER PLATE SUPPORT (UPPER)	SOPORTE PLACA NUMERO (SUPERIOR)	1
4	010200F0104	BOLT	TORNILLO	2
5	010200F0105	NUT. STEERING STEM	TUERCA VASTAGO DE DIRECCION	1
6	010200F0106	WASHER. STEERING STEM	ARANDELA VASTAGO DE DIRECCION	1
7	010200F0107	BOLT	TORNILLO	2
8	010200F0108	HOLDER. HANDLEBAR (UPPER)	SOPORTE MANILLAR (SUPERIOR)	2
9	010200F0109	RUBBER CAP	TAPON DE GOMA	4
10	010200F0110	SPRING WASHER	MUELLE ARANDELA	1
11	010200F0111	SPRING WASHER	MUELLE ARANDELA	4

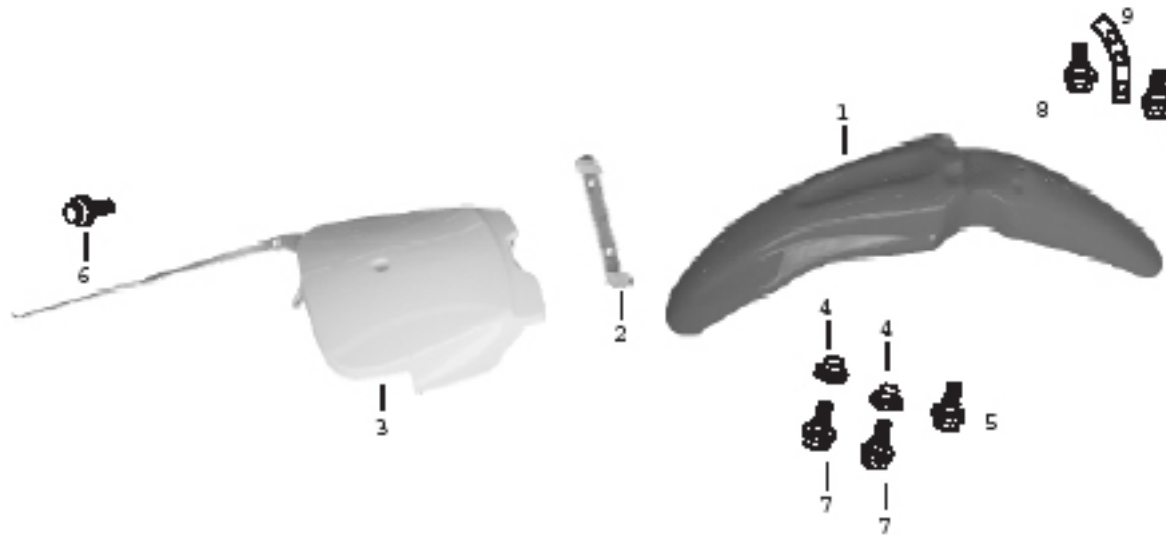
F02 STEERING STEM / TIJA INFERIOR



F02 | STEERING STEM / TIJA INFERIOR

N°	Código	Description	Descripción	QTY
1	010200F0201	GUIDE. CABLE SUPPORT	GUIA, SOPORTE DEL CABLE	1
2	010200F0202	GUIDE. BRAKE CABLE	GUIA,SOPORTE DEL FRENO	1
3	010200F0203	BEARING	COJINETE	1
4	010200F0204	STEERING	DIRECCION	1
5	010200F0205	NUT	TUERCA	1
6	010200F0206	BOLT	TORNILLO	2
7	010200F0207	DUST COVER	CUBIERTA ANTIPOLVO	1
8	010200F0208	STEM SUB ASSY	CONJUNTO DIRECCION MAESTRA	1
9	010200F0209	BOLT	TORNILLO	1

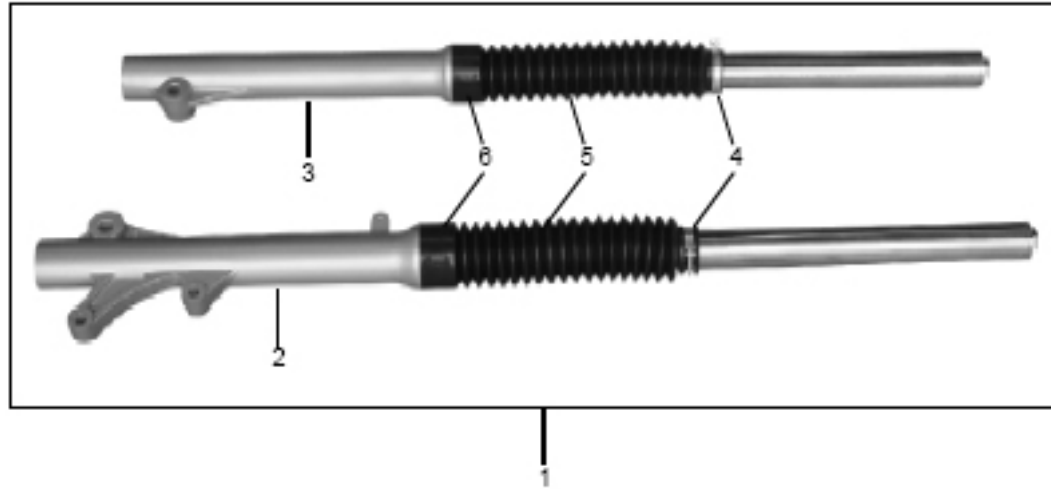
F03 FRONT FENDER / GUARDABARROS DELANTERO



F03 | FRONT FENDER / GUARDABARROS DELANTERO

N°	Código	Description	Descripción	QTY
1	010204F0301	FENDER. FR BLUE	GUARDABARROS DELANTERO AZUL	1
1	010208F0301	FENDER. FR ORANGE	GUARDABARROS DELANTERO NARANJA	1
2	010200F0302	NUMBER PLATE SUPPORT (DOWN)	SOPORTE PLACA NUMERO INFERIOR	1
3	010200F0303	PLATE. FR.NUMBER	PLACA NUMERO DELANTERA	1
4	010200F0304	BOLT	TORNILLO	1
5	010200F0305	BOLT	TORNILLO	1
6	010200F0306	BOLT	TORNILLO	2
7	010200F0307	BOLT	TORNILLO	2
8	010200F0308	STAY. FR.FENDER	TIRANTE GUARDABARROS DELANTERO	1

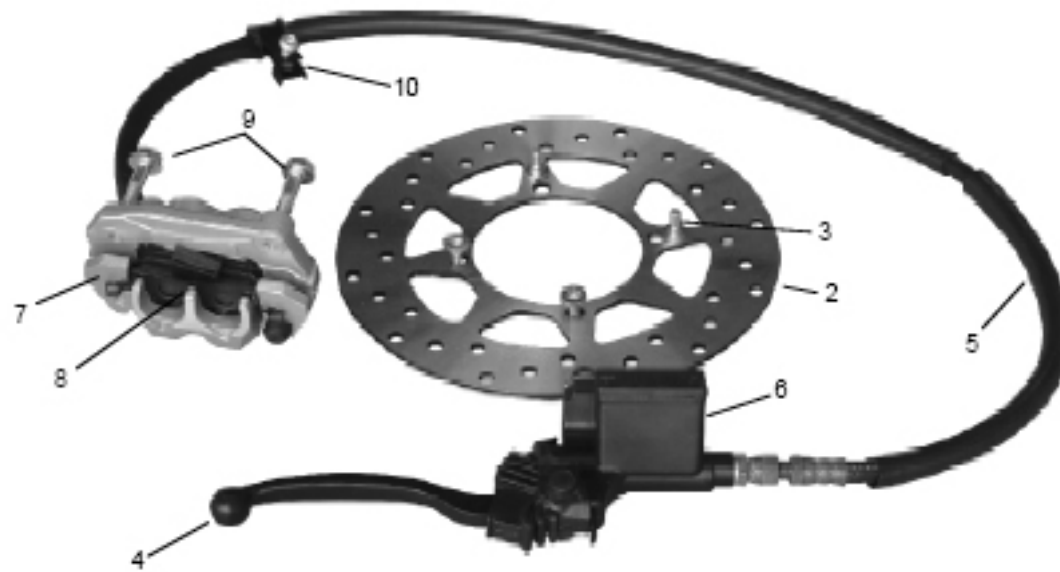
F04 FRONT FORK / HORQUILLA DELANTERA



F04 | FRONT FORK / HORQUILLA DELANTERA

N°	Código	Description	Descripción	QTY
1	010200F0401	FRONT FORK SUB-ASSY ASSY	CONJUNTO HORQUILLA MAESTRA DELANTERA	1
2	010200F0402	FRONT FORK SUB-ASSY ASSY (L)	CONJUNTO HORQUILLA MAESTRA DELANTERA IZQ.	1
3	010200F0403	FRONT FORK SUB-ASSY ASSY (R)	CONJUNTO HORQUILLA MAESTRA DELANTERA DCHA.	1
4	010200F0404	CLIP	PRESILLA	2
5	010200F0405	DUST COVER ROLLER	RODILLO CUBIERTA ANTIPOLVO	2
6	010200F0406	OIL SEAL	RETEN	2

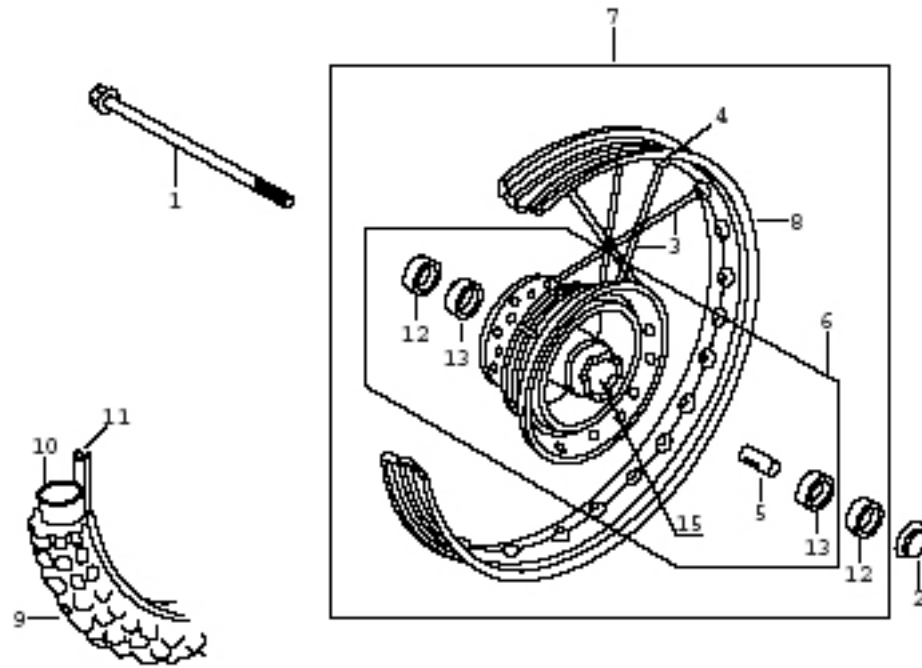
F05 REAR BRAKE PANEL / CONJUNTO FRENO DELANTERO



F05 | REAR BRAKE PANEL / CONJUNTO FRENO DELANTERO

N°	Código	Description	Descripción	QTY
1	010200F0501	FRONT BRAKE ASSY	CONJUNTO FRENO DELANTERO	1
2	010200F0502	FRONT BRAKE DISC	DISCO FRENO DELANTERO	1
3	010200F0503	BOLT	TORNILLO	4
4	010200F0504	FRONT BRAKE LEVER	PALANCA FRENO DELANTERO	1
5	010200F0505	FRONT BRAKE HOSE	MANGUITO FRENO DELANTERO	1
6	010200F0506	FRONT BRAKE PUMP (UPPER)	BOMBA FRENO DELANTERO (SUPERIOR)	1
7	010200F0507	FRONT BRAKE PUMP (DOWN)	BOMBA FRENO DELANTERO (INFERIOR)	1
8	010200F0508	FRONT BRAKE PAD	PASTILLA FRENO DELANTERO	2
9	010200F0509	BOLT	TORNILLO	1
10	010200F0510	CLIP	PRESILLA	1

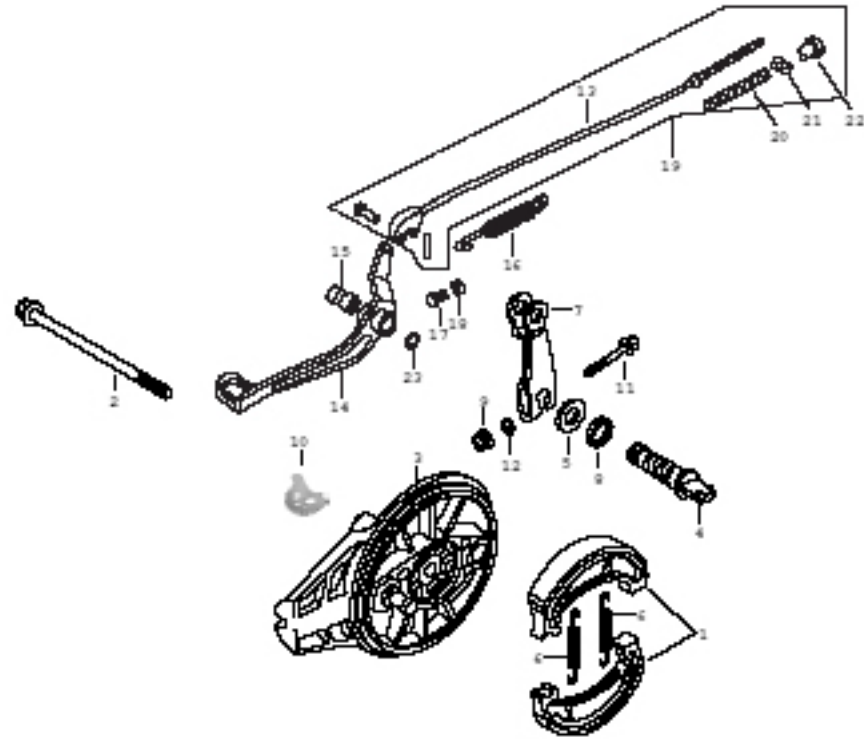
F06 FRONT WHEEL / RUEDA DELANTERA



F06 | FRONT WHEEL / RUEDA DELANTERA

N°	Código	Description	Descripción	QTY
1	010200F0601	AXLE. FR. WHEEL	EJE RUEDA DELANTERA	1
2	010200F0602	SELF-LOCKING NUT	TUERCA AUTOBLOCANTE	1
3	010200F0603	SPOKE SET B	CONJUNTO DE RADIOS B	36
4	010200F0604	SPOKE NUT	TUERCA DE RADIO	36
5	010200F0605	COLLAR. FR.AXLE DISTANCE	COLLAR. DISTANCIA EJE DELANT.	1
6	010200F0606	HUB SUB-ASSY. FR	CONJUNTO CUBO MAESTRO DELANTERO	1
7	010200F0607	WHEEL SUB-ASSY FR	CONJUNTO RUEDA MAESTRA DELANTERA	1
8	010200F0608	RIM. FR. WHEEL	LLANTA RUEDA DELANTERA	1
9	010200F0609	TIRE FR.	NEUMATICO DELANTERO	1
10	010200F0610	TUBE. TIRE FR.	TUBO DEL NEUMATICO DELANTERO	1
11	010200F0611	FLAP. TIRE	SOLAPA POSTERIOR NEUMATICO	1
12	010200F0612	DUST SEAL	GUARDAPOLVO	1
13	010200F0613	SPACER (L/R)	SEPARADOR (DCHO./IZQ.)	2
14	010200F0614	DUST SEAL	GUARDAPOLVO	1
15	010200F0615	BEARING FRONT WHEEL	COJINETE RUEDA DELANTERA	2

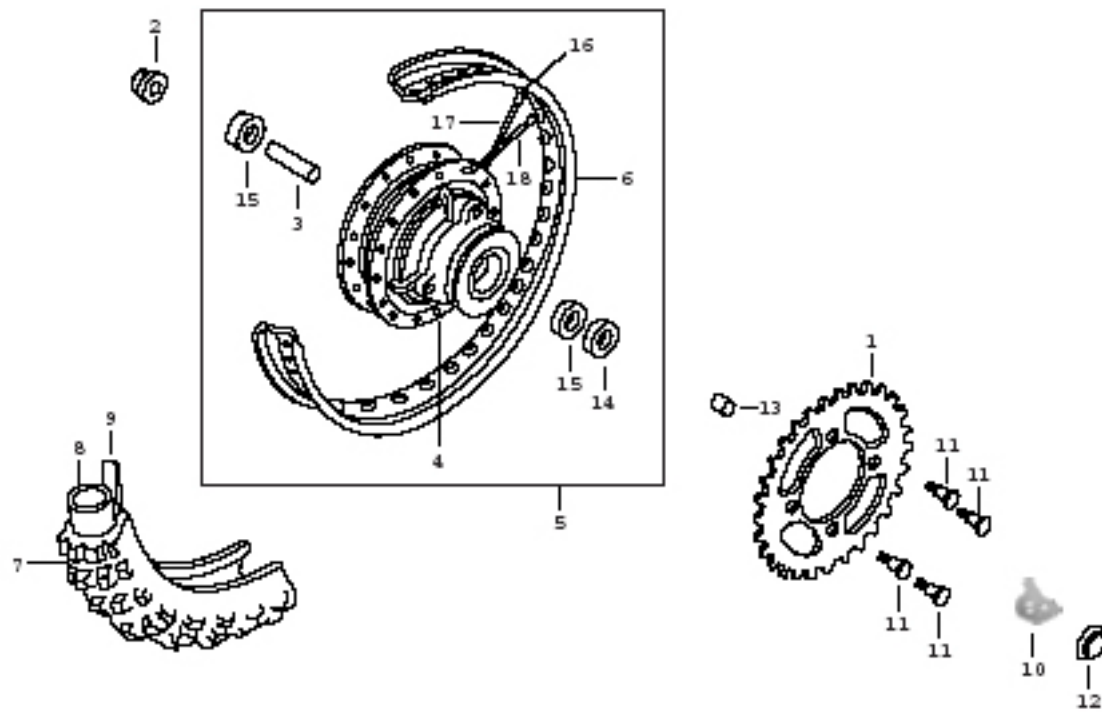
F07 FRONT WHEEL / RUEDA DELANTERA



F07 | FRONT WHEEL / RUEDA DELANTERA

N°	Código	Description	Descripción	QTY
1	010200F0701	SHOE SET.BRAKE	CONJUNTO ZAPATA FRENO	2
2	010200F0702	AXLE.RR.WHEEL	EJE RUEDA TRASERA	1
3	010200F0703	PANEL. RR.BRAKE	PANEL RUEDA TRASERA	1
4	010200F0704	CAM. RR.BRAKE	CAM. FRENO TRASERO	1
5	010200F0705	WASHER	ARANDELA	1
6	010200F0706	SPRING. BRAKE SHOE	MUELLE ZAPATA FRENO	2
7	010200F0707	ARM. RR.BRAKE	BRAZO FRENO TRASERO	1
8	010200F0708	DUST SEAL. BRAKE CAM	GUARDAPOLVO FRENO	1
9	010200F0709	WASHER	ARANDELA	1
10	010200F0710	CHAIN ADJUST (R)	SENSOR CADENA (DCHO.)	1
11	010200F0711	BOLT	TORNILLO	1
12	010200F0712	LOCKING WASHER	ARANDELA BLOCANTE	1
13	010200F0713	ROD. RR.BRAKE	BIELA FRENO TRASERO	1
14	010200F0714	PEDAL. BRAKE	PEDAL DE FRENO	1
15	010200F0715	SLEEVE. RR.BRAKE PIVOT	MANGUITO FRENO TRASERO	1
16	010200F0716	SPRING. BRAKE PEDAL	MUELLE PEDAL FRENO	1
17	010200F0717	BOLT	TORNILLO	1
18	010200F0718	NUT	TUERCA	1
19	010200F0719	REAR BRAKE RODASSY	CONJUNTO BIELA FRENO TRASERO	1
20	010200F0720	SPRING A. BRAKE ROD	MUELLE A. BIELA FRENO	1
21	010200F0721	JOINT. BRAKE ARM	JUNTA BRAZO FRENO	1
22	010200F0722	NUT	TUERCA	1
23	010200F0723	WASHER	ARANDELA	1

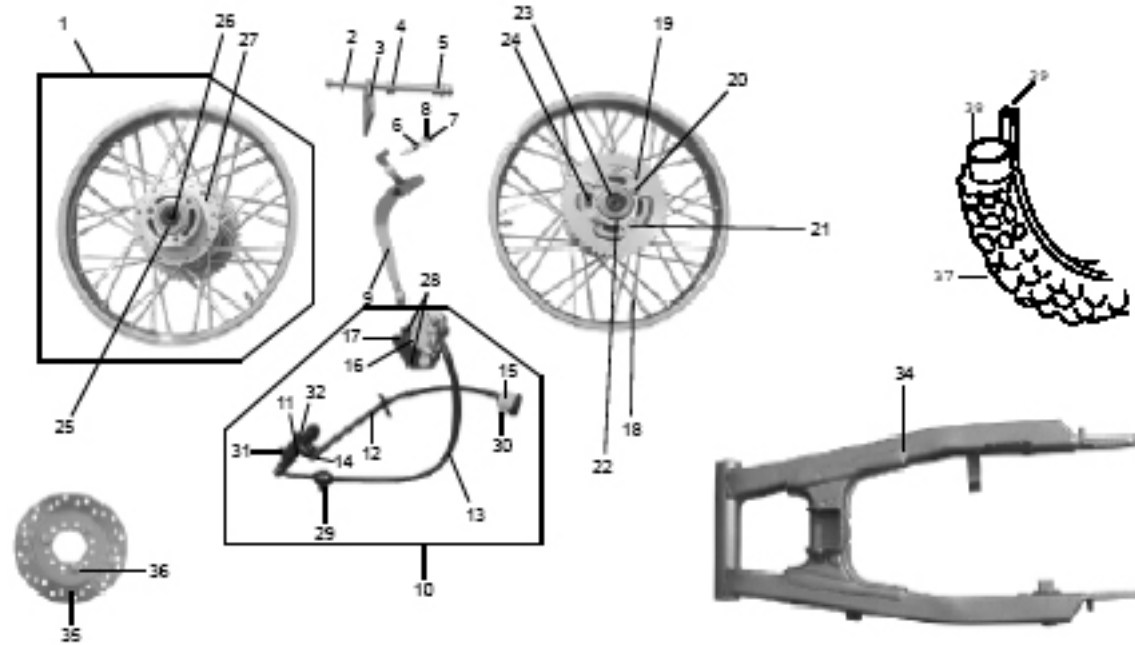
F08 REAR WHEEL / RUEDA TRASERA



F08 | REAR WHEEL / RUEDA TRASERA

N°	Código	Description	Descripción	QTY
1	010200F0801	SPROCKET. FINAL DRIVEN	CORONA, TRANSMISION FINAL	1
2	010200F0802	SPACER, REAR WHEEL (R)	SEPARADOR RUEDA TRASERA	1
3	010200F0803	COLLAR. RR.AXLE DISTANCE	COLLAR. EJE DISTANCIA TRASERA	1
4	010200F0804	HUB SUB-ASSY..RR.	CUBO MAESTRO TRASERO	1
5	010200F0805	WHEEL SUB-ASSY..RR	RUEDA MAESTRA TRASERA	1
6	010200F0806	RIM. RR. WHEEL	LLANTA RUEDA TRASERA	1
7	010200F0807	TIRE. RR.	NEUMATICO TRASERO	1
8	010200F0808	TUBE. TIRE	TUBO NEUMATICO	1
9	010200F0809	FLAP. FR. TIRE	SOLAPA POSTERIOR NEUMATICO DELANTERO	1
10	010200F0810	CHAIN ADJUST (L)	SENSOR CADENA (IZQ.)	1
11	010200F0811	SCREW FLAT	TORNILLO LLANO	4
12	010200F0812	NUT. FLANGE	TUERCA REBORDE	1
13	010200F0813	SPACER	SEPARADOR	1
14	010200F0814	DUST SEAL	GUARDAPOLVO	1
15	010200F0815	BEARING. RADIAL BALL	COJINETE,BOLAS RADIAL	2
16	010200F0816	SPOKE NUT	TUERCA DEL RADIO	36
17	010200F0817	SPOKE SET INNER	JUEGO RADIOS INTERNOS	18
18	010200F0818	SPOKE SET OUT	JUEGO RADIOS EXTERNOS	18

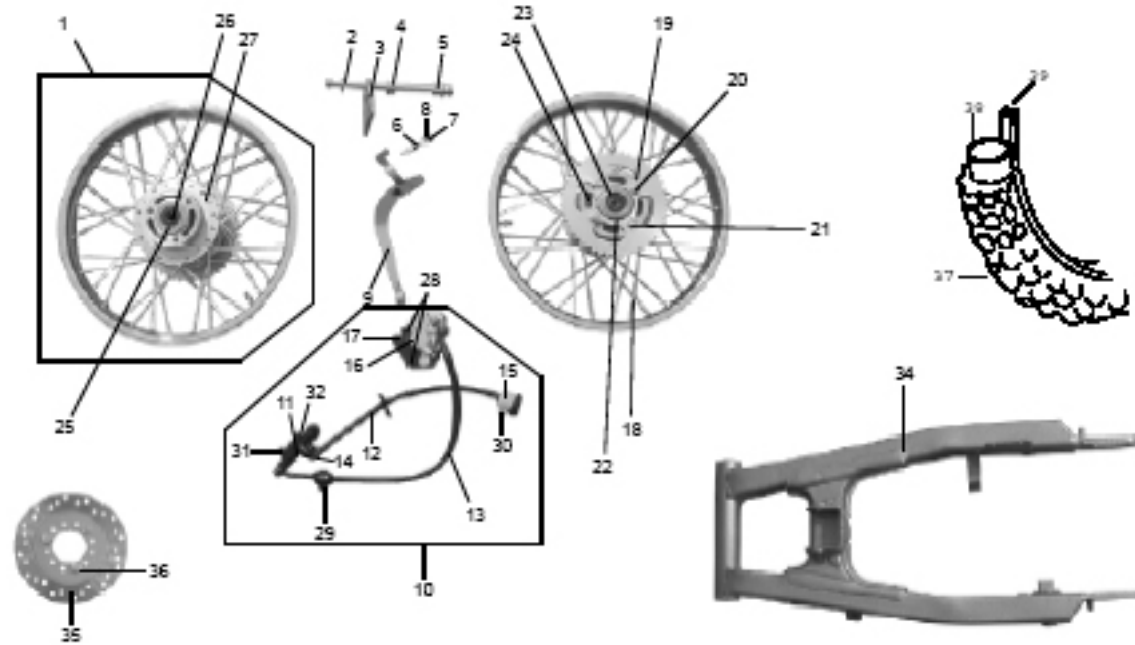
F09 REAR WHEEL / CONJUNTO RUEDA TRASERA



F09 | REAR WHEEL / CONJUNTO RUEDA TRASERA

N°	Código	Description	Descripción	QTY
1	010200F0901	WHEEL RIM ASSY	CONJUNTO LLANTAS RUEDA	1
2	010200F0902	SPACER I (R)	SEPARADOR I (DCHO.)	1
3	010200F0903	CALIPER BRAKE SUPPORT	SOPORTE PINZA FRENO	1
4	010200F0904	SPACER II (R)	SEPARADOR II (DCHO.)	1
5	010200F0905	SPACER (L)	SEPARADOR (IZQ.)	1
6	010200F0906	TAPPET ASSY	CONJUNTO ALZAVALVULAS	1
7	010200F0907	PIN	PERNO	1
8	010200F0908	COTTER PIN	PERNO CHAVETA	1
9	010200F0909	BRAKE PEDAL ASSY	CONJUNTO PEDAL FRENO	1
10	010200F0910	REAR BRAKE ASSY	CONJUNTO FRENO TRASERO	1
11	010200F0911	REAR BRAKE PUMP	BOMBA FRENO TRASERO	1
12	010200F0912	OIL TANK HOSE	MANGUITO DEPOSITO ACEITE	1
13	010200F0913	REAR BRAKE HOSE	MANGUITO FRENO TRASERO	1
14	010200F0914	CLIP	PRESILLA	1
15	010200F0915	OIL TANK	DEPOSITO ACEITE	1
16	010200F0916	REAR BRAKE PUMP	BOMBA FRENO TRASERO	1
17	010200F0917	BRAKE PAD	PASTILLA DEL FRENO	
18	010200F0918	SPOKE	RADIOS	36
19	010200F0919	DRIVE SPOK E=46	REDIOS DE TRANSMISION E=46	1
20	010200F0920	NUT	TUERCA	4

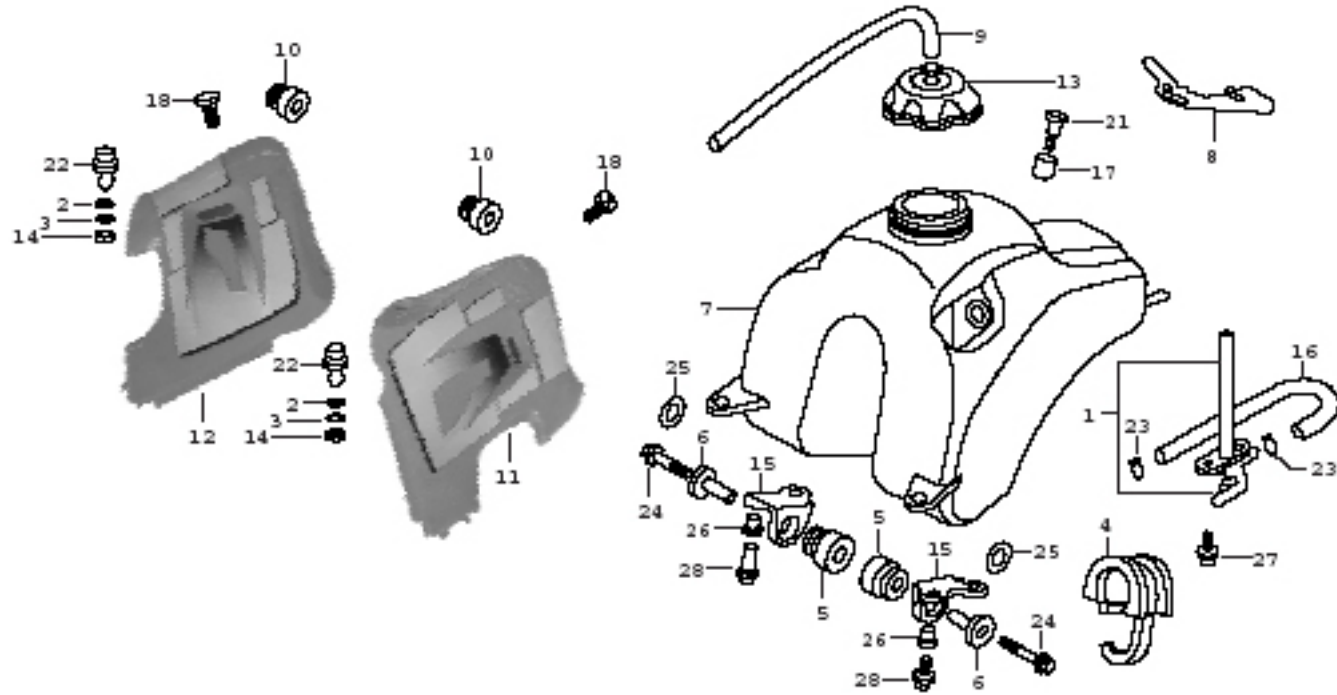
F09 REAR WHEEL / CONJUNTO RUEDA TRASERA



F09 | REAR WHEEL / CONJUNTO RUEDA TRASERA

N°	Código	Description	Descripción	QTY
21	010200F0921	BOLT	TORNILLO	4
22	010200F0922	CLIP	PRESILLA	1
23	010200F0923	OIL SEAL (L)	RETEN (IZQ.)	1
24	010200F0924	RUBBER	GOMA	4
25	010200F0925	OIL SEAL (R)	RETEN (DCHO.)	1
26	010200F0926	SPACER	SEPARADOR	1
27	010200F0927	WHEEL HUB	CUBO RUEDA	1
28	010200F0928	BOLT	TORNILLO	2
29	010200F0929	BOLT	TORNILLO	1
30	010200F0930	BOLT	TORNILLO	1
31	010200F0931	BOLT	TORNILLO	1
32	010200F0932	BOLT	TORNILLO	1
33	010200F0933	NUT SELFLOCKING	TUERCA AUTOBLOCANTE	1
34	010200F0934	SWING ARM	BRAZO OSCILANTE	1
35	010200F0935	REAR BRAKE DISC	DISCO FRENO TRASERO	1
36	010200F0936	BOLT	TORNILLO	3
37	010200F0937	TIRE. RR.	NEUMATICO TRASERO	1
38	010200F0938	TUBE. TIRE	CAMARA DEL NEUMATICO	1
39	010200F0939	FLAP. FR. TIRE	SOLAPA POSTERIOR DEL NEUMATICO DELANTERO	1

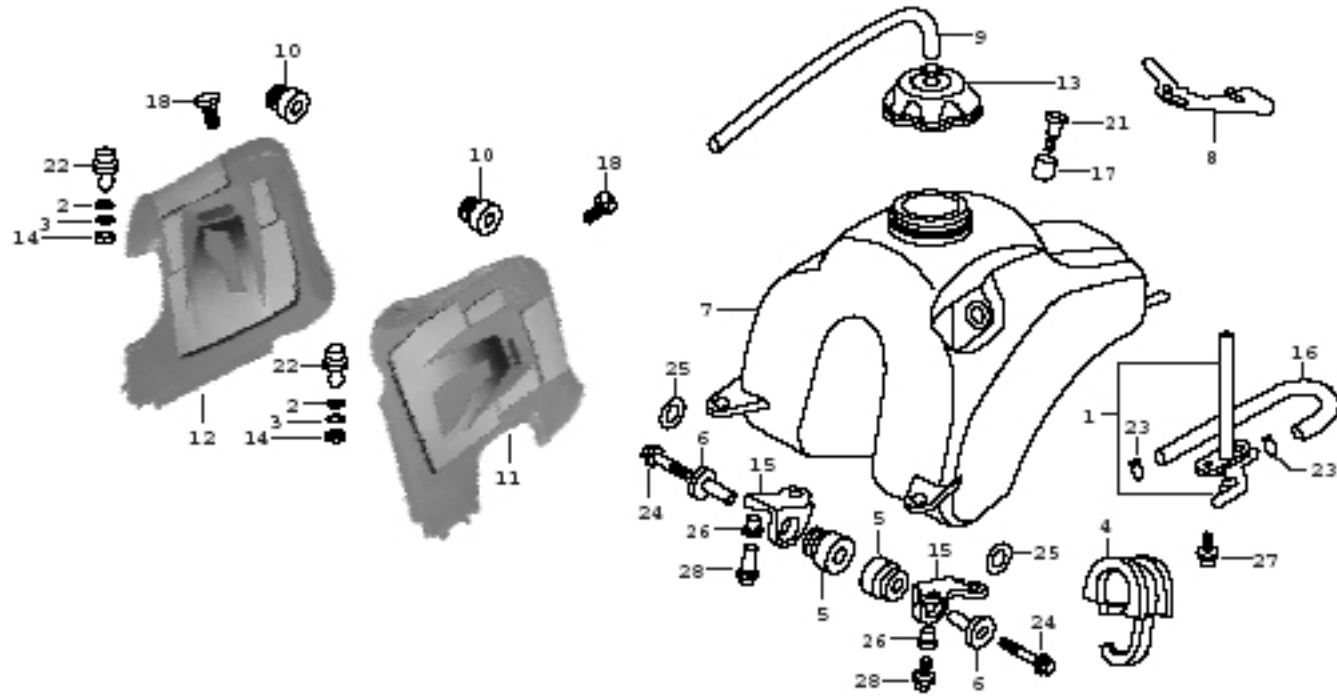
F10 | FUEL TANK / DEPOSITO - PLASTICOS



F10 | FUEL TANK / DEPOSITO - PLASTICOS

N°	Código	Description	Descripción	QTY
1	010200F1001	PETCOCK ASSY	CONJUNTO GRIFO COMBUSTIBLE	1
2	010200F1002	WASHER	ARANDELA	2
3	010200F1003	LOCK WASHER	ARANDELA BLOCANTE	2
4	010200F1004	RUBBER. TANK SETTING	GOMA REGULACION DEPOSITO	1
5	010200F1005	RUBBER. TANK MOUNTING	GOMA MONTAJE DEPOSITO	2
6	010200F1006	COLLAR. TANK SETTING	COLLAR MONTAJE DEPOSITO	2
7	010200F1007	TANK. FUEL	DEPOSITO DE GASOLINA	1
8	010200F1008	BAND. RR. TANK	CINTA DEPOSITO	1
9	010200F1009	TUBE. FUEL CAP BREATHER	TAPON RESPIRADERO TUBO DEPOSITO	1
10	010200F1010	GROMMET. SHROUD	GOMA PROTECTORA	2
11	010200F1011	SHROUD SET. R. TANK	PROTECTOR DEPOSITO DCHO.	1
12	010200F1012	SHROUD SET. L. TANK	PROTECTOR DEPOSITO IZQ.	1
13	010200F1013	CAP ASSY..FUEL TANK	TAPON DEPOSITO GASOLINA	1
14	010200F1014	NUT	TUERCA	2
15	010200F1015	BRACKET.FR. FUEL TANK	SOPORTE DEPOSITO GASOLINA DELANTERO	2

F10 FUEL TANK / DEPOSITO - PLASTICOS

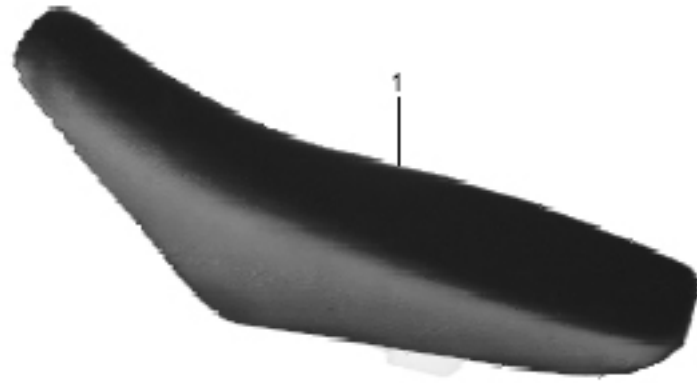





F10 | FUEL TANK / DEPOSITO - PLASTICOS

N°	Código	Description	Descripción	QTY
16	010200F1016	TUBE. FUEL	TUBO GASOLINA	1
17	010200F1017	COLLAR. BATTERY (LOWER)	COLLAR, BATERIA	1
18	010200F1018	SCREW A.COWL SETTING	TORNILLO ROSCA REGULADOR A	2
19	010200F1021	SCREW. SPECIAL	TORNILLO ROSCA ESPECIAL	1
20	010200F1022	BOLT	TORNILLO	2
21	010200F1023	CLIP.TUBE	PRESILLA DEL TUBO	2
22	010200F1024	BOLT	TORNILLO	2
23	010200F1025	WASHER	ARANDELA	2
24	010200F1026	COLLAR	COLLAR	4
25	010200F1027	BOLT	TORNILLO	2
26	010200F1028	BOLT	TORNILLO	4

F11

SEAT / SILLIN



-  2
-  3
-  4

F11 | SEAT / SILLIN

N°	Código	Description	Descripción	QTY
1	010200FI101	SEAT ASSY	CONJUNTO ASIENTO	1
2	010200FI102	LOCK WASHER	ARANDELA BLOCANTE	2
3	010200FI103	WASHER	ARANDELA	2
4	010200FI104	NUT	TUERCA	2

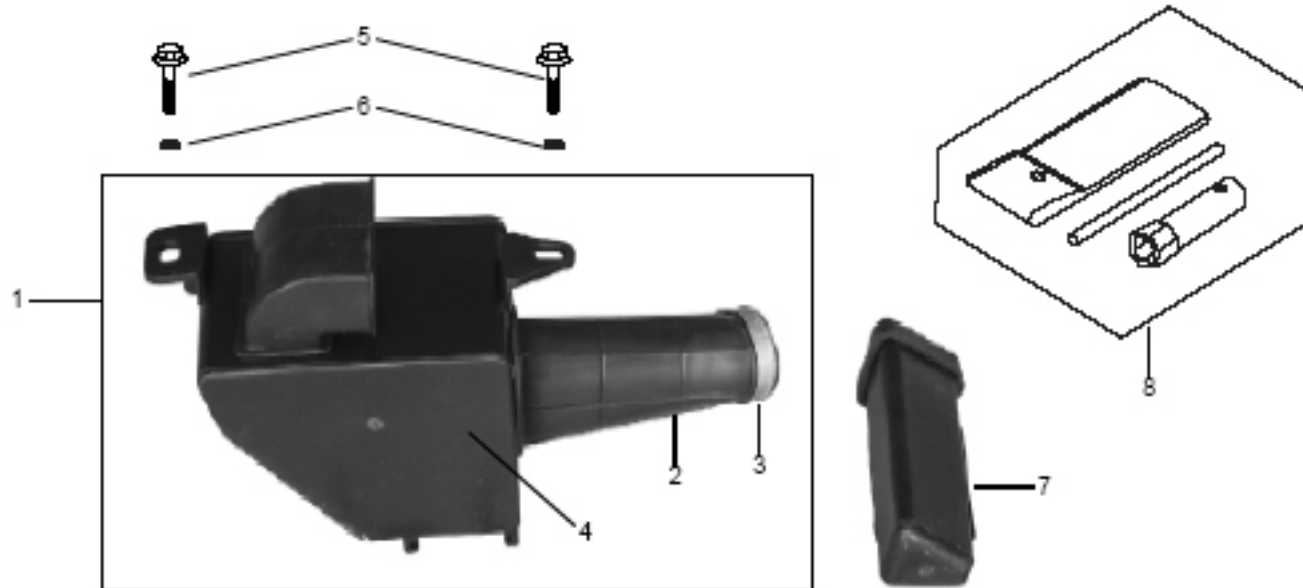
F12 | SIDE COVER / TAPAS DEPOSITO



F12 | SIDE COVER / TAPAS DEPOSITO

N°	Código	Description	Descripción	QTY
1	010204F1201	COVER.R. SIDE BLUE	CUBIERTA LATERAL DERECHA AZUL	1
1	010208F1201	COVER.R. SIDE ORANGE	CUBIERTA LATERAL DERECHA NARANJA	1
2	010200F1202	GROMMET. AIR CLEANER HOUSING	GOMA FILTRO DEL AIRE	2
3	010200F1203	GROMMET.SIDE COVER	GOMA CUBIERTA LATERAL	2
4	010204F1204	COVER.L.SIDE BLUE	CUBIERTA LATERAL IZQUIERDA AZUL	1
4	010208F1204	COVER.L.SIDE ORANGE	CUBIERTA LATERAL IZQUIERDA NARANJA	1
5	010208F1205	BOLT	TORNILLO	2

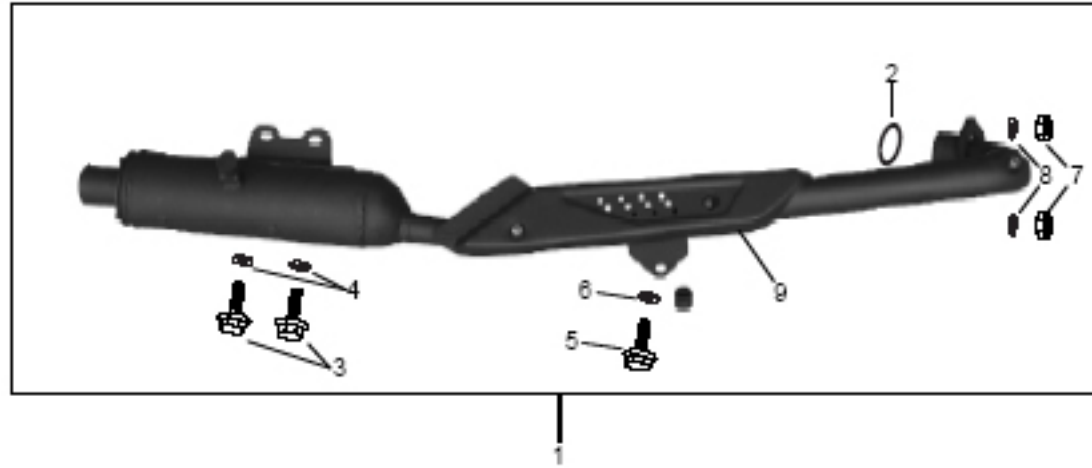
F13 AIR CLEANER



F13 | AIR CLEANER

N°	Código	Description	Descripción	QTY
1	010200F1301	AIR CLEANER ASSY	CONJUNTO FILTRO DE AIRE	1
2	010200F1302	RUBBER TUBE	TUBO DE GOMA	1
3	010200F1303	CLIP	PRESILLA	1
4	010200F1304	CLEANING ELEMENT	ELEMENTO DE LIMPIEZA	1
5	010200F1305	BOLT	TUBO DE GOMA	2
6	010200F1306	WASHER	ARANDELA	2
7	010200F1307	TOOL BOX	CAJA HERRAMIENTAS	1
8	010200F1308	TOOL ASSY	CONJUNTO DE HARRAMIENTAS	1

F14 MUFFLER / SILENCIADOR

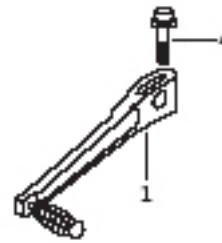
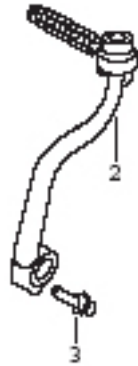


F14 | MUFFLER / SILENCIADOR

N°	Código	Description	Descripción	QTY
1	010200F1401	MUFFLER ASSY	CONJUNTO DEL SILENCIADOR	1
2	010200F1402	GASKET	JUNTA	1
3	010200F1403	BOLT	TORNILLO	2
4	010200F1404	WASHER	ARANDELA	2
5	010200F1405	BOLT	TORNILLO	1
6	010200F1406	WASHER	ARANDELA	1
7	010200F1407	NUT	TUERCA	2
8	010200F1408	LOCK WASHER	ARANDELA BLOCANTE	2
9	010200F1409	FENDER	GUARDABARROS	1

F15

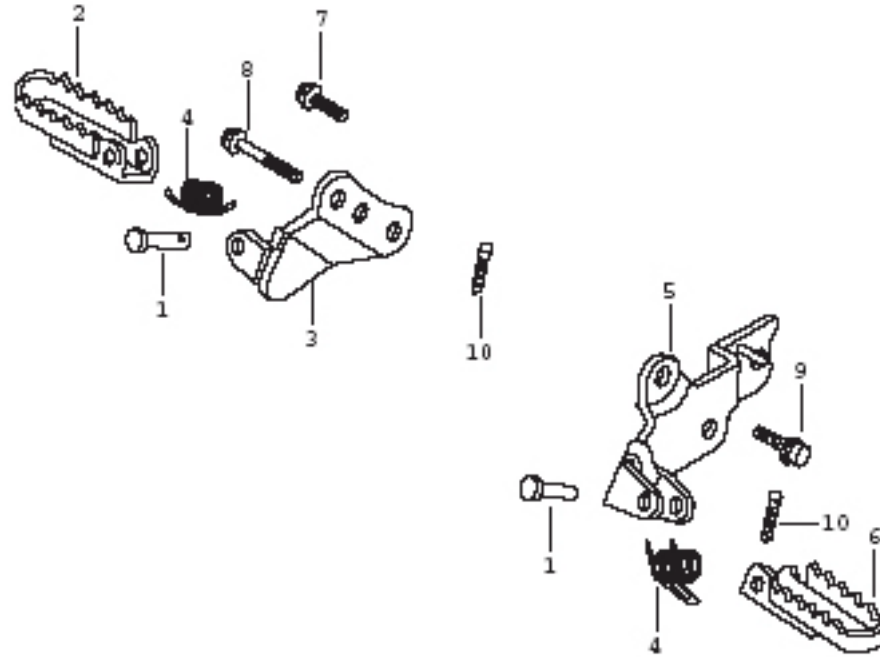
PEDAL / PEDAL ARRANQUE-CAMBIO



F15 | PEDAL / PEDAL ARRANQUE-CAMBIO

N°	Código	Description	Descripción	QTY
1	010200F1501	PEDAL.GEARSHIFT	PEDAL SELECTOR DE MARCHAS	1
2	010200F1502	ARM ASSY.KICK STARTER	BRAZO PEDAL ARRANQUE	1
3	010200F1503	BOLT	TORNILLO	1
4	010200F1504	BOLT	TORNILLO	1

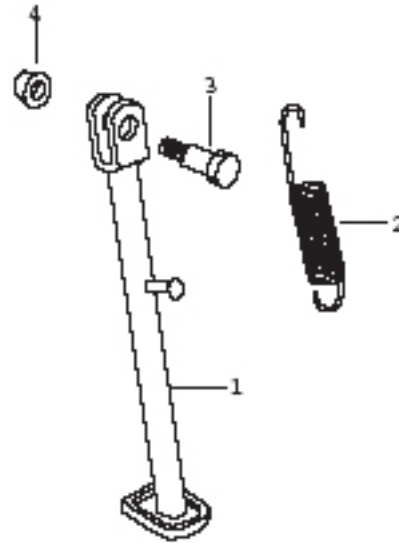
F16 | STEP / ESTRIBERES



F16 | STEP / ESTRIBERES

N°	Código	Description	Descripción	QTY
1	010200F1601	CLIP	PASADOR	2
2	010200F1602	STEP.R	REPOSAPIES DERECHO	1
3	010200F1603	BRACKET.R. STEP	SOPORTE REPOSAPIES DERECHO	1
4	010200F1604	SPRING.FOOTPEG RETURN	MUELLE RETORNO REPOSAPIES	2
5	010200F1605	BRACKET.L.STEP	SOPORTE REPOSAPIES IZQUIERDO	1
6	010200F1606	STEP.L	REPOSAPIES IZQUIERDO	1
7	010200F1607	BOLT	TORNILLO	1
8	010200F1608	BOLT	TORNILLO	1
9	010200F1609	BOLT	TORNILLO	1
10	010200F1610	PIN. COTTER	CLAVIJA PASADOR	2

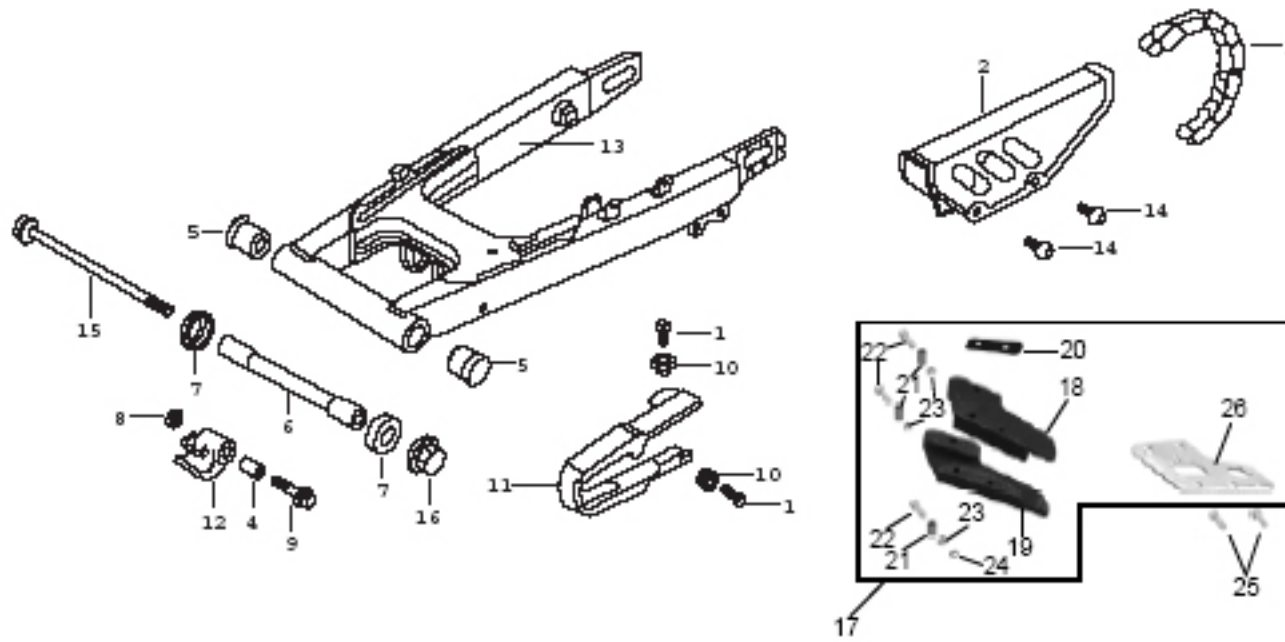
F17 | STAND / CABALLETE LATERAL



F17 | STAND / CABALLETE LATERAL

N°	Código	Description	Descripción	QTY
1	010200F1701	BAR.SIDE STAND	BARRA CABALLETE LATERAL	1
2	010200F1702	SPRING.SIDE STAND	MUELLE CABALLETE LATERAL	1
3	010200F1703	SCREW.SIDE STAND PIVOT	TORNILLO ROSCA PIVOTE CABALLETE	1
4	010200F1704	NUT	TUERCA	1

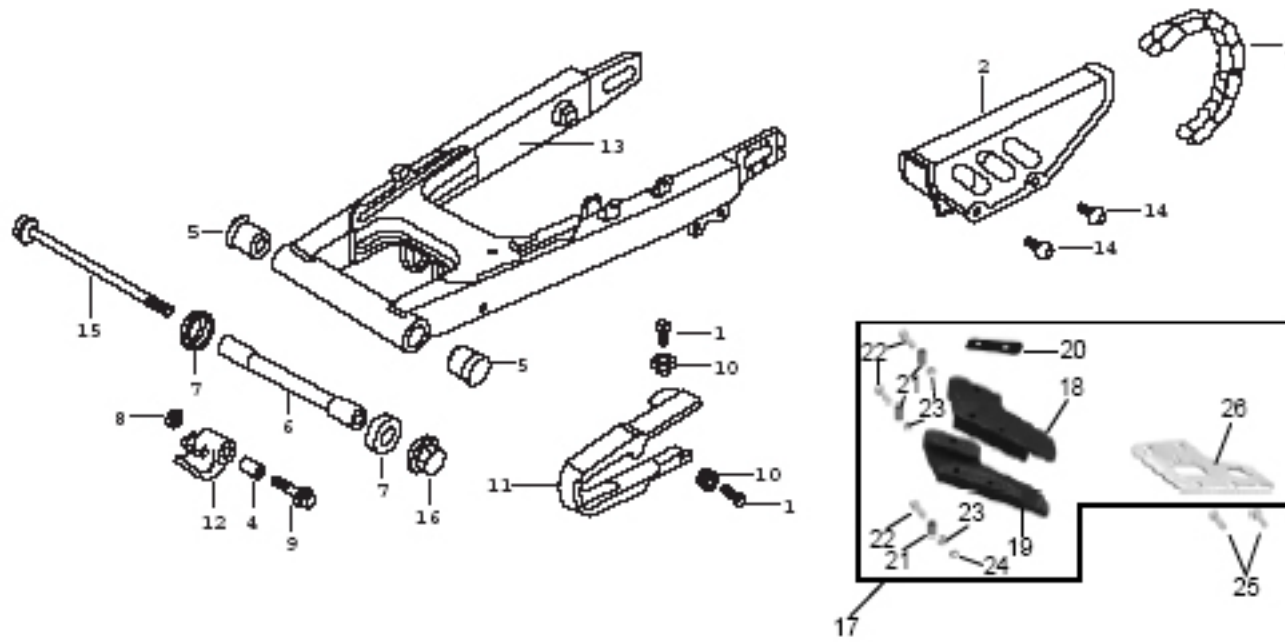
F18 | SWINGARM / BASCULANTE



F18 | SWINGARM / BASCULANTE

N°	Código	Description	Descripción	QTY
1	010200F1801	BOLT	TORNILLO	2
2	010200F1802	CASE.DRIVE CHAIN	TAPA CADENA DE TRANSMISION	1
3	010200F1803	CHAIN DRIVE	CADENA	1
4	010200F1804	SPACER	SEPARADOR	1
5	010200F1805	BUSH.PIVOT THRUST	BUJE,EMPUJE PIVOTE	2
6	010200F1806	COLLAR.SWINGARM	COLLAR CRAZO OSCILANTE	1
7	010200F1807	CAP.SWINGARM DUST SEAL	TAPON GUARDAPOLVO BRAZO OSCILANTE	2
8	010200F1808	NUT	TUERCA	1
9	010200F1809	BOLT	TORNILLO	1
10	010200F1810	WASHER CHAIN SLIDER	ARANDELA DESLIZADOR DE LA CADENA	2
11	010200F1811	SLIDER.CHAIN	DESLIZADOR DE LA CADENA	1
12	010200F1812	SLIDER.CHAIN (UPPER)	DESLIZADOR DE LA CADENA (SUPERIOR)	1
13	010200F1813	SWINGARM SUB-ASSY(DRUM BRAKE ONLY)	BRAZO MAESTRO (SOLO TAMBOR FRENO)	1
14	010200F1814	BOLT	TORNILLO	2
15	010200F1815	BOLT.SWINGARM PIVOT	TORNILLO PIVOTE BRAZO OSCILANTE	1

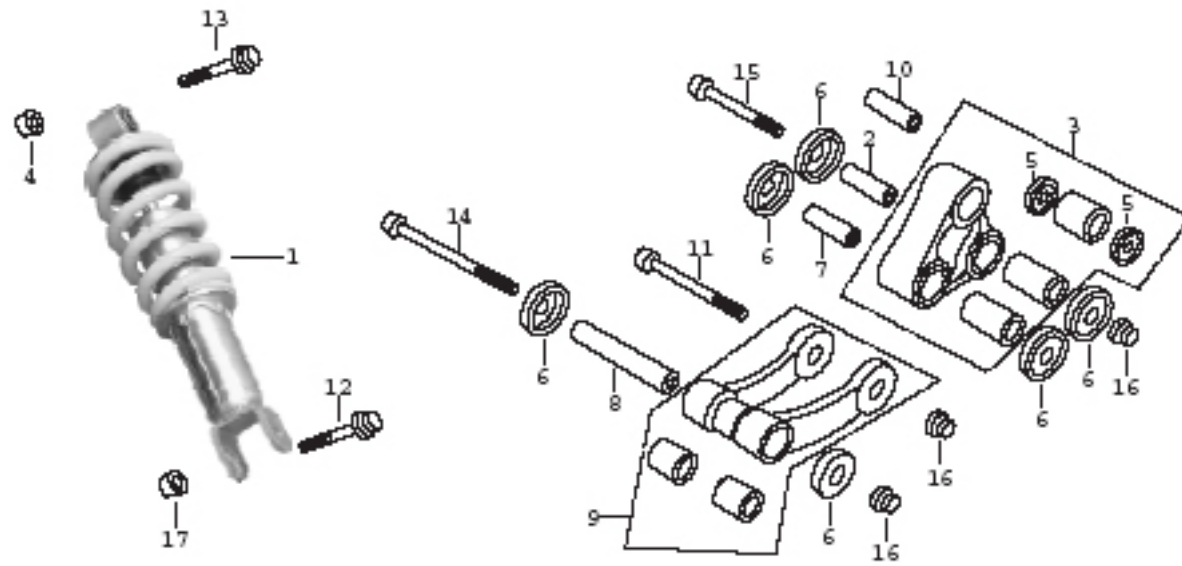
F18 | SWINGARM / BASCULANTE



F18 | SWINGARM / BASCULANTE

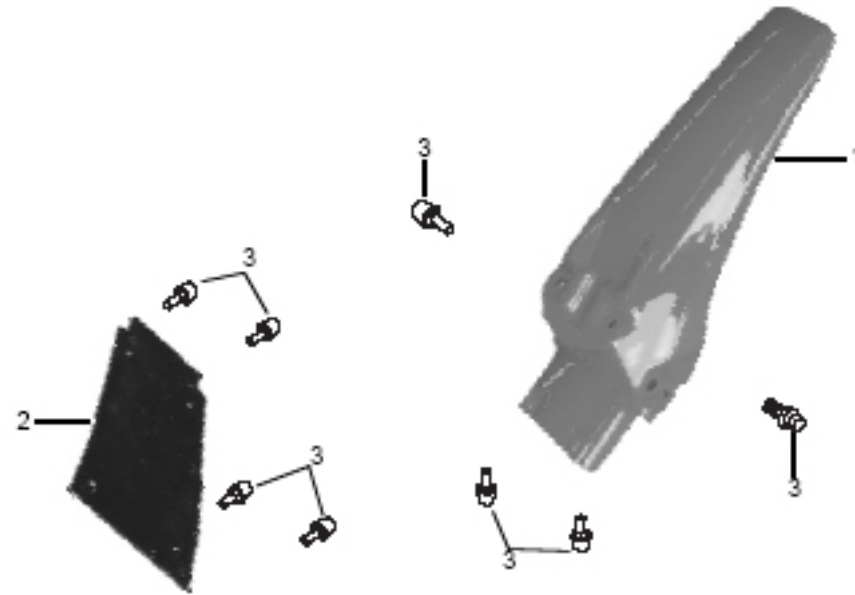
N°	Código	Description	Descripción	QTY
16	010200F1816	SELF-LOCKING NUT	TUERCA AUTOBLOCANTE	1
17	010200F1817	RUBBER BUSHING	CONJUNTO CASQUILLOS GOMA	1
18	010200F1818	RUBBER BUSHING (L)	COJINETE DE GOMA (IZQ.)	1
19	010200F1819	RUBBER BUSHING (R)	COJINETE DE GOMA (DCHA.)	1
20	010200F1820	LINKING PLATE	PLACA DE UNION	1
21	010200F1821	SPACER	SEPARADOR	3
22	010200F1822	SCREW	TORNILLO	3
23	010200F1823	NUT	TUERCA	3
24	010200F1824	WASHER	ARANDELA	1
25	010200F1825	SCREW	TORNILLO	2
26	010200F1826	STAY	TIRANTE	1

F19 REAR SHOCK ABSORBER / AMORTIGUADOR TRASERO



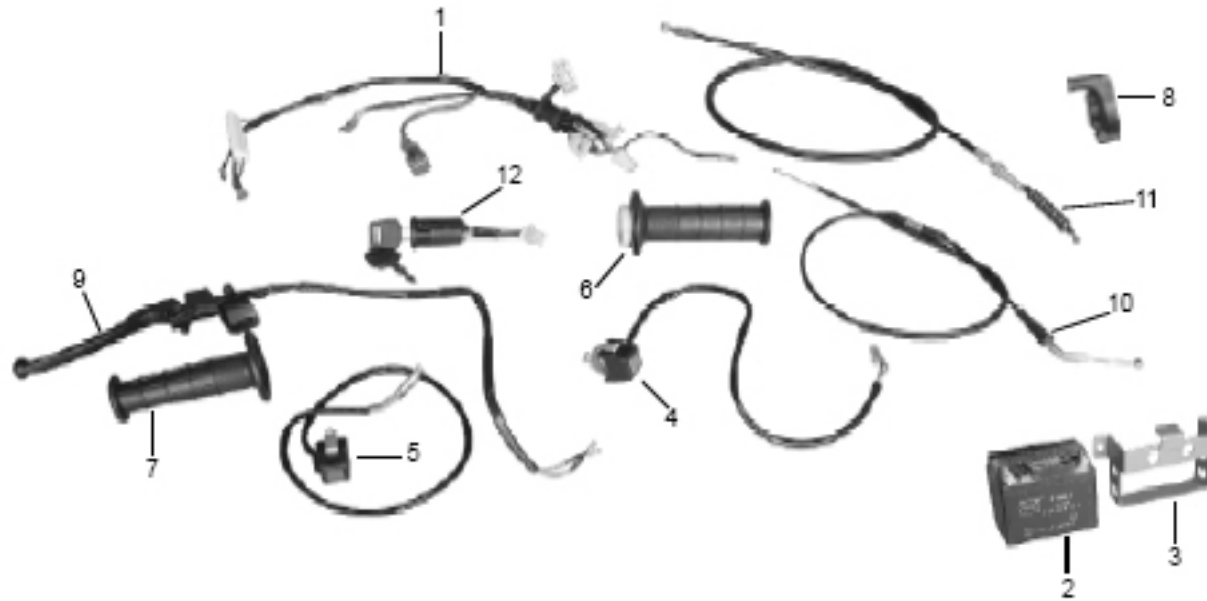
F19 | REAR SHOCK ABSORBER / AMORTIGUADOR TRASERO

N°	Código	Description	Descripción	QTY
1	010200F1901	CUSHION ASSY	CONJUNTO AMORTIGUADOR	1
2	010200F1902	COLLAR.CUSHION ARM	COLLAR BRAZO AMORTIGUADOR	1
3	010200F1903	ARM SUB-ASSY..CUSHION	BRAZO MAESTRO AMORTIGUADOR	1
4	010200F1904	NUT	TUERCA	1
5	010200F1905	SEAL	SELLO	2
6	010200F1906	CAP.DUST SEAL	TAPON GUARDAPOLVO	6
7	010200F1907	COLLAR.CONNECTING ROD PIVOT	COLLAR CONEXIÓN PIVOTE BIELA	1
8	010200F1908	COLLAR.CONNECTING ROD	COLLAR CONEXIÓN BIELA	1
9	010200F1909	ROD SUB-ASSY..SHOCK CONNECTING	CONJUNTO CONEXIÓN BIELA MAESTRA	1
10	010200F1910	COLLAR.SHOCK ABSORBER (LOWER)	COLLAR AMORTIGUADOR (INFERIOR)	1
11	010200F1911	BOLT	TORNILLO	1
12	010200F1912	BOLT	TORNILLO	1
13	010200F1913	BOLT	TORNILLO	1
14	010200F1914	BOLT	TORNILLO	1
15	010200F1915	BOLT	TORNILLO	1
16	010200F1916	SELF-LOCKING NUT	TUERCA AUTOBLOCANTE	3
17	010200F1917	SELF-LOCKING NUT	TUERCA AUTOBLOCANTE	1



F20 | REAR FENDER / GUARDABARROS TRASERO

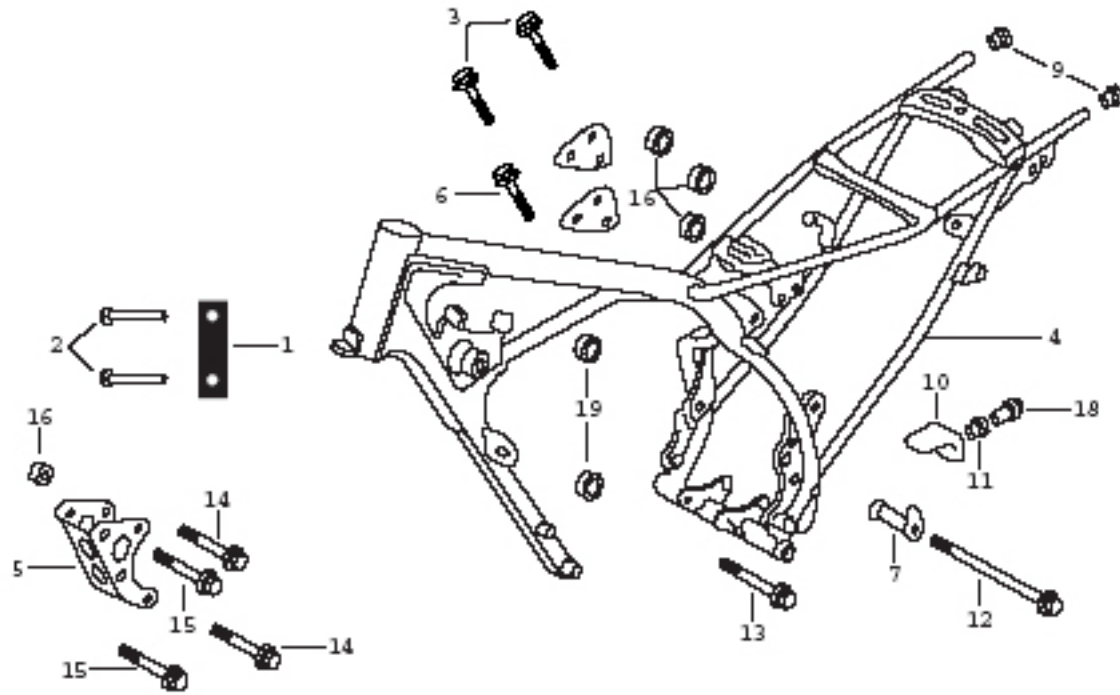
N°	Código	Description	Descripción	QTY
1	010204F2001	FENDER SET.RR. BLUE	GUARDABARROS TRASERO AZUL	1
1	010208F2001	FENDER SET.RR. ORANGE	GUARDABARROS TRASERO NARANJA	1
2	010200F2002	MUNGUARD.RR.FENDER	GUARDABARROS TRASERO	1
3	010200F2003	BOLT	TORNILLO	8



F21 | HANDLE SWITCH / ELÉCTRICOS – VARIOS MANDOS

N°	Código	Description	Descripción	QTY
1	010200F2101	WIRE HARNESS	CABLEADO	1
2	010200F2102	BATTERY	BATERIA	1
3	010200F2103	SUPPORT (FOR BATTERY)	SOPORTE(PARA LA BATERIA)	1
4	010200F2104	SWITCH (STOP)	INTERRUPTOR(PARO)	1
5	010200F2105	SWITCH (STARTER)	INTERRUPTOR(ARRANQUE)	1
6	010200F2106	THROTTLE GRIP	PUÑO ACELERADOR	1
7	010200F2107	LEFT GRIP	PUÑO IZQUIERDO	1
8	010200F2108	THROTTLE SET	JUEGO ACELERADOR	1
9	010200F2109	CLUTCH LEVER	PALANCA EMBRAGUE	1
10	010200F2110	THROTTLE CABLE	CABLE DEL ACELERADOR	1
11	010200F2111	CLUTCH CABLE	CABLE DEL EMBRAGUE	1
12	010200F2112	IGNITION LOCK	INTERRUPTOR DE CIERRE	1

F22 | FRAME / CHASIS PRINCIPAL



F22 | FRAME / CHASIS PRINCIPAL

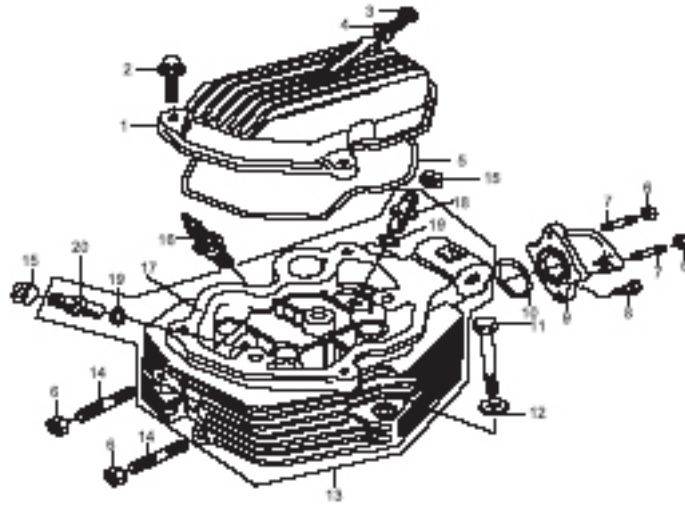
N°	Código	Description	Descripción	QTY
1	010200F2201	NAME PLATE	PLACA NOMBRE	1
2	010200F2202	CLIVER ?????????????? Mirar esquema	REMACHE	2
3	010200F2203	BOLT M8X65	TORNILLOS M8X65	1
4	010200F2204	FRAME ASSY	CONJUNTO BASTIDOR	1
5	010200F2205	STAY.FR.ENGINE HANGER	SOPORTE DELANTERO DEL MOTOR	1
6	010200F2206	BOLT M8X59	TORNILLO M8X59	1
7	010200F2207	COLLAR.L.RR.ENGINE HANGER	COLLAR.SOPORTE TRASERO DEL MOTOR	1
8	010200F2208	PLATE (R)	PLACA (DCHA.)	1
9	010200F2209	PLUG.HOLE	AGUJERO PARA LA BUJIA	2
10	010200F2210	SLIDER.ASSY..CHAIN (LOWER)	CONJUNTO CADENA DESLIZANTE (INFERIOR)	1
11	010200F2211	SPACER	SEPARADOR	1
12	010200F2212	BOLT M10X161	TORNILLO M10X161	1
13	010200F2213	BOLT M10X110	TORNILLO M10X110	1
14	010200F2214	BOLT M8X92	TORNILLO M8X92	2
15	010200F2215	BOLT M8X73	TORNILLO M8X73	2
16	010200F2216	SELF-LOCKING NUT	TUERCA AUTOBLOCANTE	7
17	010200F2217	PLATE (L)	PLACA (IZQUIERDA)	1
18	010200F2218	BOLT	TORNILLO	1
19	010200F2219	SELF-LOCKING NUT	TUERCA AUTOBLOCANTE	2

MECHA

Parts list / Despiece



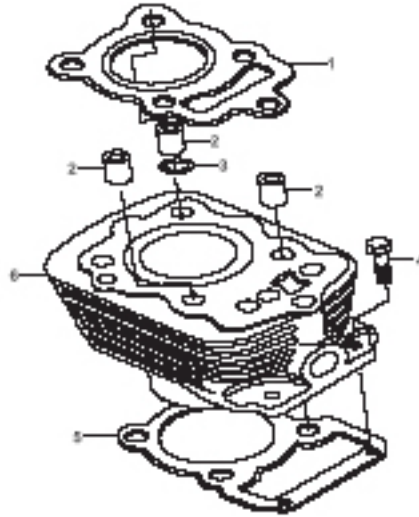
M01 | CYLINDER HEAD / CULATA



M01 | CYLINDER HEAD / CULATA

N°	Código	Description	Descripción	QTY
1	010200M0101	CYLINDER HEAD COVER	CUBIERTA CULATA	1
2	010200M0102	BOLT M6 X 28	TORNILLO M6 X 28	3
3	010200M0103	BOLT M6 X 12	TORNILLO M6 X 12	1
4	010200M0104	WASHER 6	ARANDELA	1
5	010200M0105	GASKET, CYLINDER COVER	JUNTA CUBIERTA CILINDRO	1
6	010200M0106	NUT M6	TUERCA M6	4
7	010200M0107	STUD	TORNILLO CABEZA HUECA	2
8	010200M0108	BOLT M6 X 20	TORNILLO M6 X 20	2
9	010200M0109	INLET PIPE	TUBO DE ENTRADA	1
10	010200M0110	O-RING	JUNTA TORICA	1
11	010200M0111	BOLT	TORNILLO	1
12	010200M0112	WASHER	ARANDELA	1
13	010200M0113	CYLINDER HEAD ASSY	CONJUNTO CULATA	1
14	010200M0107	STUD	TORNILLO CABEZA HUECA	2
15	010200M0115	OIL-SEAL, VALVE STEM	RETEN,VASTAGO DE LA VALVULA	2
16	010200M0116	SPARK PLUG (D7)	BUJIA	1
17	010200M0117	CYLINDER HEAD	CULATA	1
18	010200M0118	GUIDE, IN VALVE	GUIA, VALVULA	1
19	010200M0119	O-RING	JUNTA TORICA	2
20	010200M0120	GUIDE, EX.VALVE	GUIA, EX. VALVULA	1

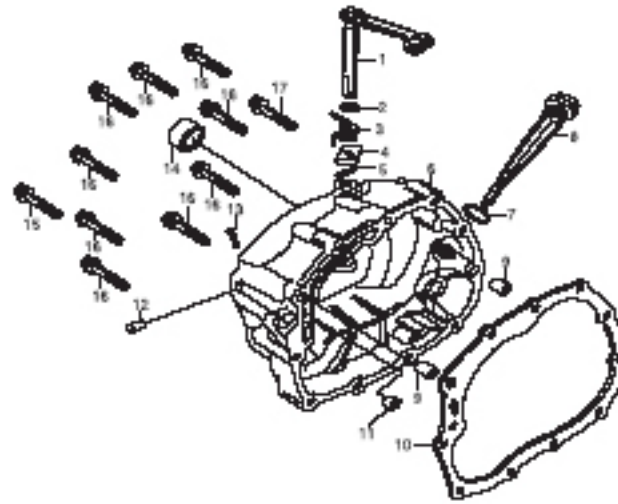
M02 | CYLINDER / CILINDRO



M02 | CYLINDER / CILINDRO

N°	Código	Description	Descripción	QTY
1	010200M0201	GASKET, CYLINDER HEAD	JUNTA CULATA	1
2	010200M0202	PIN	PERNO	3
3	010200M0203	O-RING	JUNTA TORICA	1
4	010200M0204	BOLT M6 X 22	TORNILLO M6 X 22	2
5	010200M0205	CYLINDER GASKET	JUNTA CILINDRO	1
6	010200M0206	CYLINDER BODY COMP	CUERPO DEL CILINDRO	1

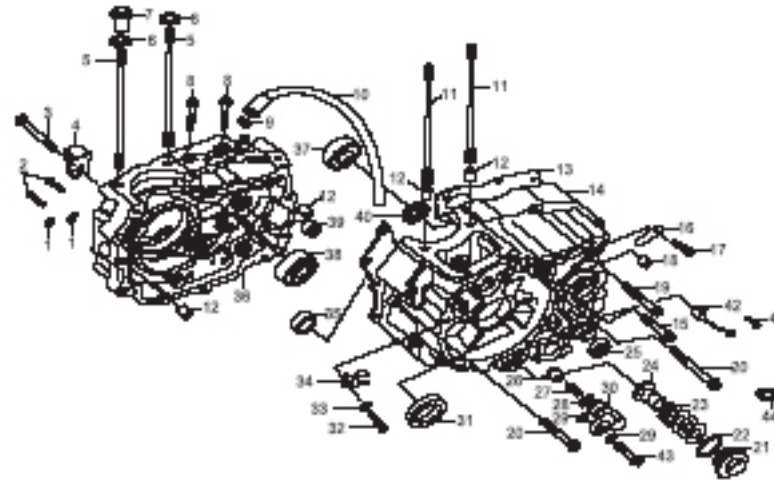
M03 | CLUTCH COVER / TAPA EMBRAGUE



M03 | CLUTCH COVER / TAPA EMBRAGUE

N°	Código	Description	Descripción	QTY
1	010200M0301	1 CLUTCH LEVER ASSY	CONJUNTO PALANCA EMBRAGUE	1
2	010200M0302	O-RING	JUNTA TORICA	1
3	010200M0303	SPRING	MUELLE	1
4	010200M0304	CLUTCH SEPERATING CAM	SEPARACION EMBRAGUE	1
5	010200M0305	COTTER PUN 2 X 16	PASADOR 2 X 16	1
6	010200M0306	R.CRANKCASE COVER	CUBIERTA CARTER DERECHO	1
7	010200M0307	O-RING	JUNTA TORICA	1
8	010200M0308	OIL-RULER	VARILLA NIVEL ACEITE	1
9	010200M0309	POSITION PIN	PERNO POSICION	2
10	010200M0310	GASKET, R.CRANKCASE COVER	JUNTA, CUBIEERTA CARTER	1
11	010200M0311	OIL-MEASERING HOLE, R.COVER	AGUJERO MEDICION ACEITE	1
12	010200M0312	PLUG CONE-SHAPED	BUJIA FORMA CONICA	1
13	010200M0313	SCREW M5 X 25	TORNILLO M5 X 25	1
14	010200M0314	OIL SEAL	RETEN	1
15	010200M0315	BOLT M6 X 50	TORNILLO M6 X 50	1
16	010200M0316	BOLT M6 X 40	TORNILLO M6 X 40	9
17	010200M0317	BOLT M6 X 36	TORNILLO M6 X 36	1

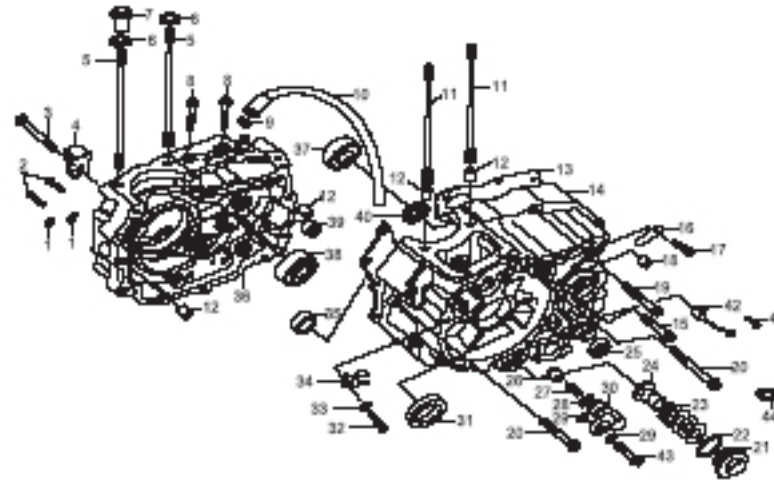
M04 | MAIN CRANCASES / CARTERES CENTRAL



M04 | MAIN CRANCASES / CARTERES CENTRAL

N°	Código	Description	Descripción	QTY
1	010200M0401	O-RING	JUNTA TORICA	2
2	010200M0402	SCREW M6 X 30	TORNILLO M6 X 30	2
3	010200M0403	BOLT M6 X 55	TORNILLO M6 X 55	1
4	010200M0404	CLUTCH CABLE STAND	CABLE EMBRAGUE	1
5	010200M0405	STUD	ESPARRAGO	2
6	010200M0406	PLAIN WASHER 8	ARANDELA PLANA 8	2
7	010200M0407	PLAIN WASHER 8	ARANDELA PLANA 8	4
8	010200M0408	BOLT M6 X 28	TORNILLO M6 X 28	2
9	010200M0409	CLAMP	ABRAZADERA	1
10	010200M0410	BREATH PIPE	BOMBA RESPIRACION	1
11	010200M0411	STUD	ESPARRAGO	2
12	010200M0412	POSITION PIN	PERNO POSICION	4
13	010200M0413	GASKET, CRANKCASE	JUNTA CARTER	1
14	010200M0414	L.CRANKCASE ASSY (INCLUDING No.18)	CONJUNTO CARTER IZQ. (INCLUIDO N°18)	1
15	010200M0415	BOLT M6 X 25	TORNILLO M6 X 25	1
16	010200M0416	SPRING PROTECTOR	MUELLE PROTECTOR	1
17	010200M0417	BOLT M6 X 12	TORNILLO M6 X 12	1
18	010200M0418	NEEDLE BEARING HK101410	AGUJA COJINETE	1
19	010200M0419	BOLT M6 X 50	TORNILLO M6 X 50	9
20	010200M0420	BOLT M6 X 95	TORNILLO M6 X 95	1
21	010200M0421	SCREW COVER	TORNILLO ROSCA	1
22	010200M0107	O-RING	JUNTA TORICA	1

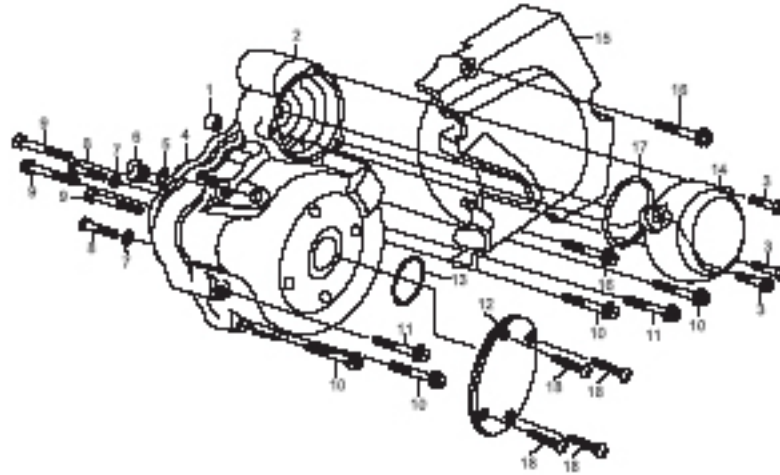
M04 | MAIN CRANCASES / CARTERES CENTRAL



M04 | MAIN CRANCASES / CARTERES CENTRAL

N°	Código	Description	Descripción	QTY
23	010200M0423	SPRING, OIL FILTER ELEMENT	MUELLE FILTRO ACEITE	1
24	010200M0424	FILTER ELEMENT COMP	FILTRO ACEITE	1
25	010200M0425	OIL SEAL	RETEN	1
26	010200M0426	PIN	PERNO	1
27	010200M0427	SPRING	MUELLE	1
28	010200M0428	O-RING	JUNTA TORICA	1
29	010200M0429	SEARLING WASHER 6	ARANDELA ESPECIAL	2
30	010200M0430	PRESSING PIN	PERNO PRESION	1
31	010200M0431	OIL SEAL	RETEN	1
32	010200M0432	BOLT M6 X 16	TORNILLO M6 X 16	1
33	010200M0433	WASHER 6	ARANDELA 6	1
34	010200M0434	GEAR FIXTURE	FIJACION ENGRANAJE	1
35	010200M0435	ROLLING BEARING 106	RODADURA DE COJINETE	1
36	010200M0436	R.CRANKCASE ASSY	CONJUNTO CARTER	1
37	010200M0437	ROLING BEARING 6204	RODADURA DE COJINETE	1
38	010200M0438	BEARING 6203	COJINETE 6203	1
39	010200M0439	NEEDLE BEARING HK1512V2	COJINETE HK 1512V2	1
40	010200M0440	OIL-SEAL PD20 X 34 X 7	RETEN PD20X34X7	1
41	010200M0441	NUT M6 X 12	TUERCA M6 X 12	1
42	010200M0442	OUT-OLACED GEAR INDICATOR	INDICADOR MARCHAS	1
44	010200M0444	O- RING	JUNTA TORICA	1

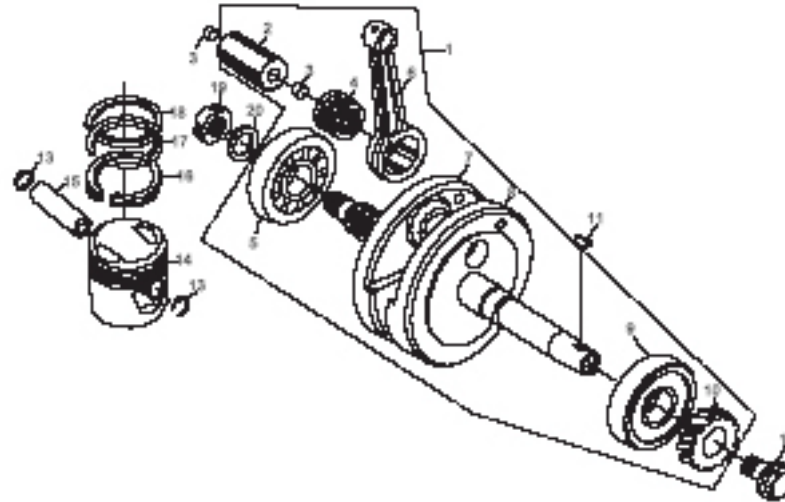
M05 | STEERING COVER / TAPA VOLANTE - PIÑON



M05 | STEERING COVER / TAPA VOLANTE - PIÑON

N°	Código	Description	Descripción	QTY
1	010200M0501	NEEDLE BEARING HK101410	AGUJA COJINETE HK 101410	1
2	010200M0502	L.CRANKCASE COVER	CUBIERTA IZQUIERDA CARTER	1
3	010200M0503	BOLT M6 X 18	TORNILLO M6 X 18	3
4	010200M0504	GASKET, L.CRANKCASE COVER	JUNTA CUBIERTA IZQUIERDA CARTER	1
5	010200M0505	O-RING	JUNTA TORICA	1
6	010200M0506	SCREW COVER	TORNILLO ROSCA	1
7	010200M0507	WASHER 5	ARANDELA 5	2
8	010200M0508	SCREW M5 X 15	TORNILLO M5 X 15	2
9	010200M0509	BOLT M5 X 25	TORNILLO M5 X 25	3
10	010200M0510	BOLT M6 X 40	TORNILLO M6 X 40	5
11	010200M0511	BOLT M6 X 50	TORNILLO M6 X 50	2
12	010200M0512	COVER	CUBIERTA	1
13	010200M0513	O-RING	JUNTA TORICA	1
14	010200M0514	REDUCTION GEAR COVER	CUBIERTA ENGRANAJE REDUCCION	1
15	010200M0515	BACKCOVER, L.CRANKCASE	CUBIERTA POSTERIOR CARTER	1
16	010200M0516	BOLT M6 X 30	TORNILLO M6 X 30	2
17	010200M0517	O-RING	JUNTA TORICA	1
18	010200M0518	SCREW M6 X 10	TORNILLO M6 X 10	4

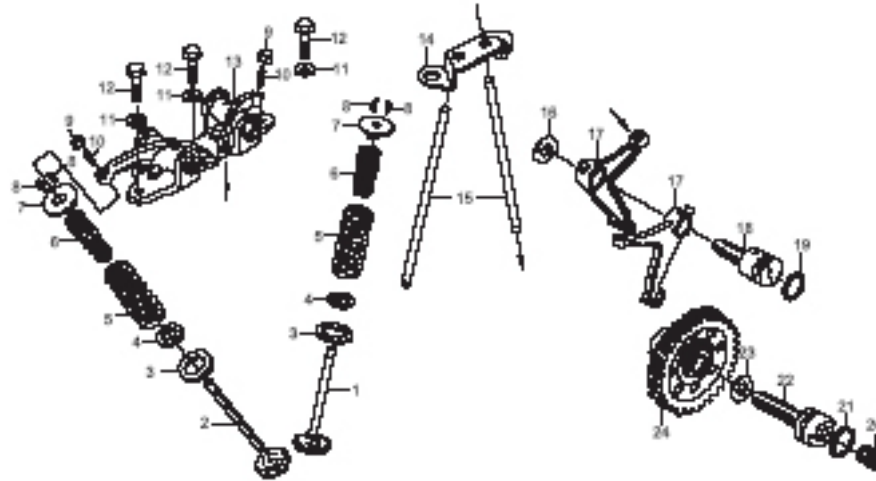
M06 | CRANCKSHAFT – ROD / CONJUNTO CIGUEÑAL - BIELA



M06 | CRANCKSHAFT – ROD / CONJUNTO CIGUEÑAL - BIELA

N°	Código	Description	Descripción	QTY
1	010200M0601	CRANKSHAFT CONNECTING ROD COMP	BIELA CONEXIÓN CARTER	1
2	010200M0602	CRANK PIN	PERNO CIGÜEÑAL	1
3	010200M0603	PLUG CRANK PIN	PERNO BUJIA CIGÜEÑAL	1
4	010200M0604	BOTTOM BEARING, CONNECTING ROD	BIELA DE CONEXIÓN COJINETE INFERIOR	1
5	010200M0605	ROLLING BEARING	COJINETE ONDULADO	1
6	010200M0606	CONNECTING ROD	BIELA DE CONEXION	1
7	010200M0607	R.CRANKSHAFT	CARTER DERECHO	1
8	010200M0608	L.CRANKSHAFT	CARTER IZQUIERDO	1
9	010200M0609	ROLLING BEARING	COJINETE ONDULADO	1
10	010200M0610	CRANKSHAFT TIMING GEAR	ENGRANAJE CARTER	1
11	010200M0611	SEMI CIRCLAR KEY	LLAVE SEMICIRCULAR	1
12	010200M0612	BOLT	TORNILLO	1
13	010200M0613	CIRCLIP, PISTON PIN	PISTON GRUPILLA	2
14	010200M0614	PISTON	PISTON	1
15	010200M0615	PISTON PIN	PISTON PERNO	1
16	010200M0616	OIL RING COMP	ANILLO COMPONENTE ACEITE	1
17	010200M0617	PISTON RING 2	ANILLO PISTON 2	1
18	010200M0618	PISTON RING 1	ANILLO PISTON 1	1
19	010200M0619	LOCKING NUT	TUERCA CIERRE	1
20	010200M0620	WASHER	ARANDELA	1

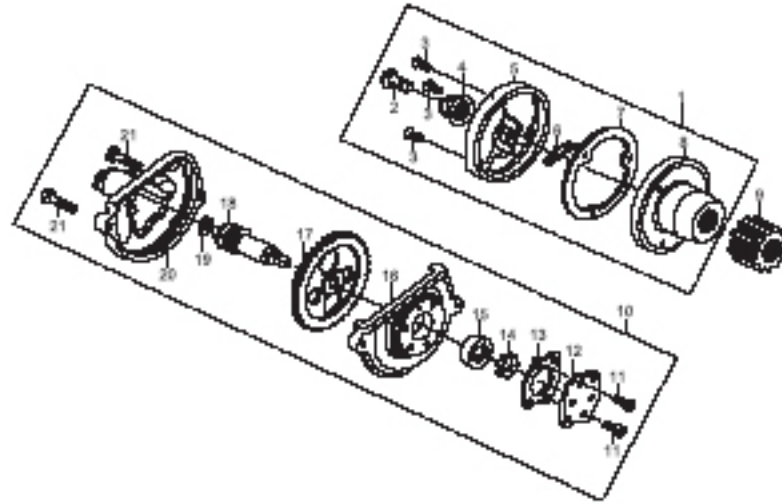
M07 | DISTRIBUTION ASSY – VALVES / CONJUNTO DISTRIBUCIÓN - VALVULAS



M07 | DISTRIBUTION ASSY – VALVES / CONJUNTO DISTRIBUCIÓN - VALVULAS

N°	Código	Description	Descripción	QTY
1	010200M0701	INLET VALVE	VALVULA ENTRADA	1
2	010200M0702	OUTLET VALVE	VALVULA SALIDA	1
3	010200M0703	OUTER, SPRING SEAT, VALVE	MUELLE VALVULA DE SALIDA	2
4	010200M0704	INNER, SPRING SEAT, VALVE	MUELLE VALVULA DE ENTRADA	2
5	010200M0705	OUTER SPRING	MUELLE EXTERIOR	2
6	010200M0706	INNER SPRING	MUELLE INTERIOR	2
7	010200M0707	UPPER SPRING SEAT VALVE	MUELLE VALVULA SUPERIOR	2
8	010200M0708	LOCK PLATE	PLACA CIERRE	2
9	010200M0709	ADJUSTING NUT, VALVE CLEARANCE	TUERCA DE AJUSTE, VALVULA ESPACIO LIBRE	2
10	010200M0710	ADJUSTING SCREW, VALVE CLEARANCE	TORNILLO DE AJUSTE, VALVULA ESPACIO LIBRE	2
11	010200M0711	WASHER	ARANDELA	3
12	010200M0712	BOLT	TORNILLO	3
13	010200M0713	ROCKER ARM COMP	BRAZO	1
14	010200M0714	GUIDE PLATE, PUSH LEVER	PLACA GUIA, PALANCA EMPUJE	1
15	010200M0715	PUSH LEVER COMP	PALANCA EMPUJE	2
16	010200M0716	WAVE WASHER	ARANDELA ONDULADA	1
17	010200M0717	LOWER ROCKER	RODADURA INFERIOR	2
18	010200M0718	SHAFT, LOWER ROCKER	EJE RODADURA INFERIOR	1
19	010200M0719	O-RING	JUNTA TORICA	1
20	010200M0720	SPRING	MUELLE	1
21	010200M0721	O-RING	JUNTA TORICA	1
22	010200M0722	SHAFT	EJE	1
23	010200M0723	THRUST WASHER	ARANDELA EMPUJE	1
24	010200M0724	CAM SHAFT COMP	COMPONENTE DEL EJE	1

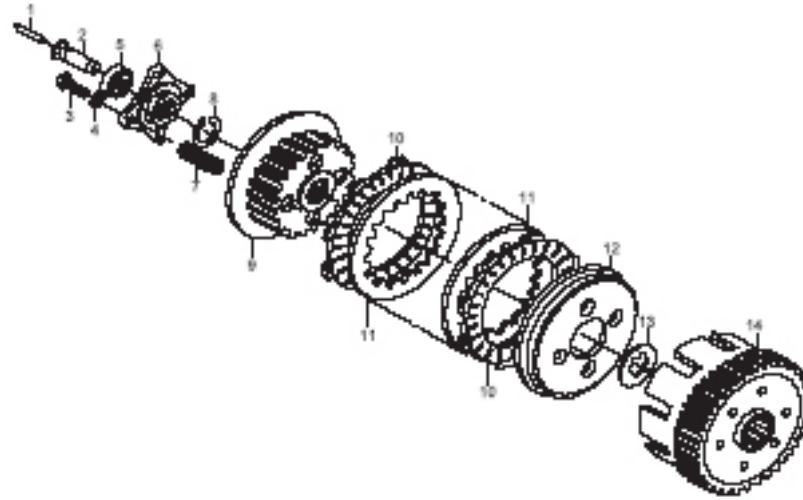
M08 | OIL PUMP / BOMBA ACEITE



M08 | OIL PUMP / BOMBA ACEITE

N°	Código	Description	Descripción	QTY
1	010200M0801	OIL FILTER COMP	FILTRO DEL ACEITE	1
2	010200M0802	EX. OIL TUBE	TUBO ESCAPE ACEITE	1
3	010200M0803	SCREW M5 X 12	TORNILLO M5 X 12	3
4	010200M0804	SPRING, EX. OIL TUBE	MUELLE TUBO ACEITE	1
5	010200M0805	COVER, OIL FILTER	CUBIERTA FILTRO ACEITE	1
6	010200M0806	COTTER PIN	PERNO CHAVETA	1
7	010200M0807	GASKET, OIL FILTER COVER	JUNTA CUBIERTA FILTRO ACEITE	1
8	010200M0808	ROTOR ASSY, OIL FILTER	CONJUNTO DEL ROTOR, FILTRO ACEITE	1
9	010200M0809	PRIMARY DRIVE GEAR	ENGRANAJE DE TRANSMISION	1
10	010200M0810	OIL PUMP ASSY	CONJUNTO BOMBA DE ACEITE	1
11	010200M0811	SCREW M4 X 12	TORNILLO M4 X 12	2
12	010200M0812	OIL PUMP COVER	CUBIERTA BOMBA DE ACEITE	1
13	010200M0813	GASKET, OIL PUMP	JUNTA BOMBA ACEITE	1
14	010200M0814	INNER ROTOR, OIL PUMP	ROTOR DE ENTRADA, BOMBA ACEITE	1
15	010200M0815	OUTER ROTOR, OIL PUMP	ROTOR DE SALIDA, BOMBA DE ACEITE	1
16	010200M0816	OIL PUMP CASE	TAPA BOMBA DE ACEITE	1
17	010200M0817	DRIVE GEAR, OIL PUMP	ENGRANAJE DE TRANSMISION, BOMBA DE ACEITE	1
18	010200M0818	TACHOMETER DRIVEN GEAR	TACOMETRO ENGRANAJE DE TRANSMISION	1
19	010200M0819	WASHER	ARANDELA	1
20	010200M0820	COVER, OIL PUM GEAR	CUBIERTA ENGRANAJE BOMBA DE ACEITE	1
21	010200M0821	BOLT M5 X 20	TORNILLO M5 X 20	2

M09 | CLUTCH / EMBRAGUE



M09 | CLUTCH / EMBRAGUE

N°	Código	Description	Descripción	QTY
1	010200M0901	SEPARATING ROD	BIELA SEPARADORA	1
2	010200M0902	AXLE SLEEVE, SEPARATING	MANGUITO SEPARADOR EJE	1
3	010200M0903	BOLT M6 X 25	TORNILLO M6 X 25	4
4	010200M0904	WASHER 6	ARANDELA 6	4
5	010200M0905	BEARING E101	COJINETE E101	1
6	010200M0906	CLUTCH SEPARATING PLATE	PLQATO SEPARADOR EMBRAGUE	1
7	010200M0907	SPRING, CLUTCH	MUELLE EMBRAGUE	4
8	010200M0908	CIRCLIP	CIRCLIP	1
9	010200M0909	CLUTCH CENTER PIECE ASSY	CONJUNTO PIEZAS EMBRAGUE	1
10	010200M0910	FRICITION PLATE ASSY	CONJUNTO PLACAS DE FRICCION	5
11	010200M0911	FRICITION IRON PLATE	PLACA METALICA DE FRICCION	5
12	010200M0912	PRESSING DISK, CLUTCH	DISCO PRESION EMBRAGUE	1
13	010200M0913	SPLINE WASHER, MAIN AXLE	ARANDELA ESTRIADA EJE PRINCIPAL	1
14	010200M0914	CLUTCH HOUSING COVER	CUBIERTA ALOJAMIENTO EMBRAGUE	1

M10 | CHANGES – PINION – AXES / CAMBIO – PIÑONES - EJES



M10 | CHANGES – PINION – AXES / CAMBIO – PIÑONES - EJES

N°	Código	Description	Descripción	QTY
1	010200M1001	THRUST WASHER	ARANDELA DE EMPUJE	1
2	010200M1002	SPACER	SEPARADOR	1
3	010200M1003	DRIVING GEAR, 2ND	ENGRANAGE DE TRANSMISION 2°	1
4	010200M1004	DRIVING GEAR, 5TH	ENGRANAJE DE TRANSMISION 5°	1
5	010200M1005	SPLINE WASHER	ARANDELA ESTRIADA	3
6	010200M1006	CIRCLIP 20	CIRCLIP 20	4
7	010200M1007	DRIVING GEAR, 4TH	ENGRANAJE DE TRANSMISION 4°	1
8	010200M1008	DRIVING GEAR, 3RD	ENGRANAJE DE TRANSMISION 3°	1
9	010200M1009	MAIN SHAFT, TANSMISSION	EJE PRINCIPAL DE TRANSMISION	1
10	010200M1010	CIRCLIP	GRUPILLA	1
11	010200M1011	STARTING GEAR COMP	ENGRANAJE DE ARRANQUE	1
12	010200M1012	CIRCLIP	GRUPILLA	1
13	010200M1013	STARTING IDLE GEAR	ENGRANAJE DE ARRANQUE	1
14	010200M1014	BUSH, STARTING IDLE GEAR	BUJE, ENGRANAJE DE ARRANQUE	1
15	010200M1015	THRUST WASHER	ARANDELA DE EMPUJE	2
16	010200M1016	DRIVN GEAR, 1ST	ENGRANAJE DE TRANSMISION 1ª	1
17	010200M1017	BUSH	BUJE	1
18	010200M1018	DRIVEN GEAR, 3RD	ENGRANAJE DE TRANSMISION 3ª	1
19	010200M1019	DRIVEN GEAR, 4TH	ENGRANAJE DE TRANSMISION 4°	1
20	010200M1020	DRIVE SHAFT	EJE CONDUCCION	1

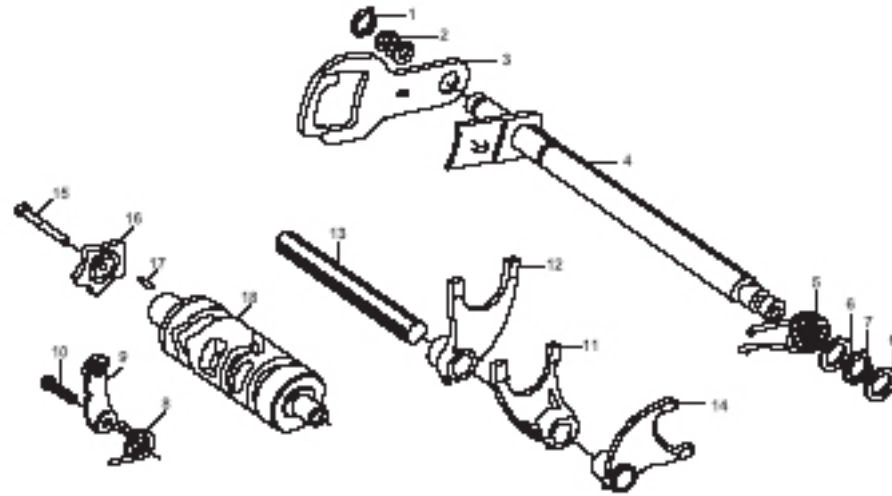
M10 | CHANGES – PINION – AXES / CAMBIO – PIÑONES - EJES



M10 | CHANGES – PINION – AXES / CAMBIO – PIÑONES - EJES

N°	Código	Description	Descripción	QTY
21	010200M1021	DRIVEN GEAR, 5TH	ENGRANAJE DE CONDUCCION 5°	1
22	010200M1022	DRIVEN GEAR, 2ND	ENGRANAJE DE CONDUCCION 2°	1
23	010200M1023	THRUST WASHER	ARANDELA DE EMPUJE	1
24	010200M1024	DRIVING SPROCKET	CORONA DE CONDUCCION	2
25	010200M1025	FIXTURE PLATE	PLACA DE FIJACION	1
26	010200M1026	BOLT M6 X 10	TORNILLO M6 X 10	2
27	010200M1027	WASHER	ARANDELA	1
28	010200M1028	CIRCLIP 16	CIRCLIP	1
29	010200M1029	RATCHET GUIDE PLATE	PLACA GUIA TRINQUETE	1
30	010200M1030	SPRING	MUELLE	1
31	010200M1031	THRUST WASHER	ARANDELA DE EMPUJE	1
32	010200M1032	RATCHET	TRINQUETE	1
33	010200M1033	CIRCLIP	GRUPILLA	1
34	010200M1034	THRUST WASHER	ARANDELA DE EMPUJE	1
35	010200M1035	STARTING PINION	PIÑON DE ARRANQUE	1
36	010200M1036	SHAFT, STARTOR	EJE, ESTATOR	1
37	010200M1037	SPRING SEAT	MUELLE	1
38	010200M1038	RETURN SPRING, STARTOR	MUELLE DE RETORNO, ESTATOR	1
39	010200M1039	COLLAR	COLLAR	1
40	010200M1040	THRUST WASHER	ARANDELA DE EMPUJE	1

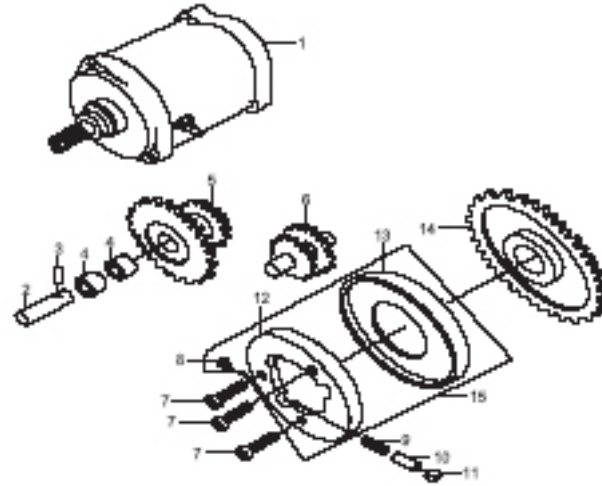
M11 | SELECTOR / SELECTOR



M11 | SELECTOR / SELECTOR

N°	Código	Description	Descripción	QTY
1	010200MI101	CIRCLIP 12	CIRCLIP 12	1
2	010200MI102	SPRING, GEAR CHANGE PLATE	MUELLE PLACA CAMBIO ENGRANAJE	1
3	010200MI103	GEAR CHANGE PLATE	PLACA CAMBIO ENGRANAJE	1
4	010200MI104	GEAR SHIFT ASSY	CONJUNTO SELECTOR DE MARCHAS	1
5	010200MI105	RETURN SPRING, GEAR SHIFT	MUELLE DE RETORNO,SELECTOR DE MARCHAS	1
6	010200MI106	THRUST WASHER	ARANDELA DE EMPUJE	2
7	010200MI107	CIRCLIP 14	CIRCLIP 14	1
8	010200MI108	SPRING	MUELLE	1
9	010200MI109	STOPPER LEVER ASSY	TOPE PALANCA	1
10	010200MI110	BOLT M6 X 20	TORNILLO M6 X 20	1
11	010200MI111	FORK, MIDDLE	HORQUILLA CENTRAL	1
12	010200MI112	FORK, RIGHT	HORQUILLA DERECHA	1
13	010200MI113	FORK, SHAFT	EJE HORQUILLA	1
14	010200MI114	FORK (LEFT)	HORQUILLA IZQUIERDA	1
15	010200MI115	BOLT M6 X 25	TORNILLO M6 X 25	1
16	010200MI116	SHIFT CAM	SELECTOR	1
17	010200MI117	PIN 4 X 10	CLAVIJA 4 X 10	1
18	010200MI118	SHIFT DRUM	TAMBOR SELECTOR	1

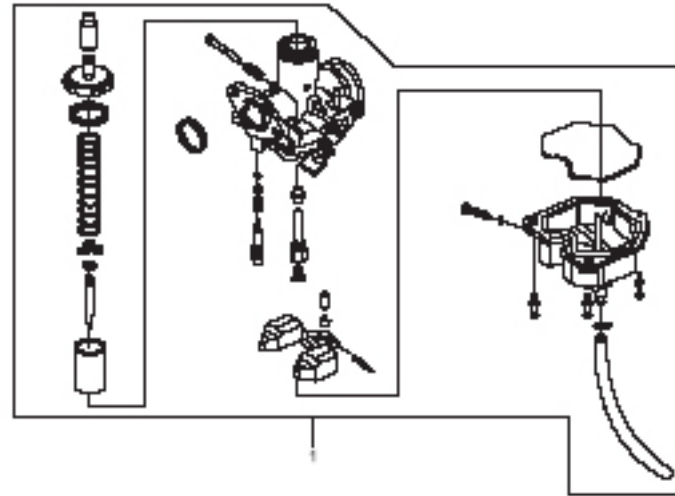
M12 | STARTING ENGINE / MOTOR ARRANQUE



M12 | STARTING ENGINE / MOTOR ARRANQUE

N°	Código	Description	Descripción	QTY
1	010200M1201	STARTING MOTOR ASSY	MOTOR DE ARRANQUE	1
2	010200M1202	AXLE	EJE	1
3	010200M1203	PIN 2 X 16	CLAVIJA 2 X 16	1
4	010200M1204	NEEDLE BEARING HK 101410	COJINETE	2
5	010200M1205	DRIVEN GEAR, AXLE I	ENGRANAJE DE TRANSMISION, EJE I	1
6	010200M1206	DRIVEN GEAR, AXLE II	ENGRANAJE DE TRANSMISION, EJE II	1
7	010200M1207	SCREW M8 X 15	TORNILLO M8 X 15	3
8	010200M1208	SPRING HOLDER	SOPORTE MUELLE	3
9	010200M1209	SPRING, ROLLER	MUELLE ESPIRAL	3
10	010200M1210	SPRING SLEEVE	MUELLE MANGUITO	3
11	010200M1211	ROLLER	ESPIRAL	3
12	010200M1212	HOUSING, STARTING CLUTCH	ALOJAMIENTO EMBRAGUE	3
13	010200M1213	SIDE COVER, STARTING CLUTCH	CUBIERTA LATERAL, EMBRAGUE	1
14	010200M1214	JOINT ASSY, GEAR	CONJUNTO UNION DIRECCION	1
15	010200M1215	STARTING CLUTCH COMP	ARRANQUE EMBRAGUE	1

M13 | CARBURETOR / CARBURADOR



M13 | CARBURETOR / CARBURADOR

N°	Código	Description	Descripción	QTY
1	010200M1301	CARBURETOR ASSY	CONJUNTO CARBURADOR	1



w w w . c l i p i c . c o m



c/ Terrassa, 5-7, 17800 Olot (Girona) Spain

T. 902 10 11 13

F. 972 27 26 21

e-mail: info@clipic.com